

CNC REFERENCE GUIDE

2026



BOX WAY LATHES FOR HEAVY CUTTING

PAGE 18



NEW RANGE
COMPACT MILLS

PAGE 10



Y-AXIS + DUAL-SPINDLE
'DONE-IN-ONE' LATHES

PAGE 31



FULLY INTEGRATED
PALLET POOLS

PAGE 38

4



VERTICALS

6



SUPER SPEED VMC

8



MOULD MAKER VMC

10



COMPACT MILLS

15



TOOLROOM MILLS

16



5-AXIS MACHINES

20



ROTARY TABLES

26



HORIZONTALS

28



TURNING CENTRES

31



TOOLROOM LATHES

32



Y-AXIS LATHES

34



ROBOTS + COBOTS

38



AUTOMATION

NEW FOR 2026



DUAL SPINDLE Y-AXIS LATHES
"DONE-IN-ONE" SOLUTION FOR MULTI-OP PARTS

PAGE 31



REDESIGNED MINI MILLS
COMPACT AND POWERFUL

PAGE 10



UMC-400 & UMC-400SS
COMPACT & AFFORDABLE 5-AXIS

PAGE 18



BOX WAY LATHES
FOR HEAVY CUTTING

PAGE 34



COBOTS: 5KG, 10KG, 15KG & 30KG
PLUG & PLAY COLLABORATIVE ROBOTS

PAGE 36

4



VERTICALS

6



SUPER SPEED VMC

8



MOULD MAKER VMC

10



MINI MILLS

15



TOOLROOM MILLS

16



5-AXIS MACHINES

20



ROTARY TABLES

26



HORIZONTALS

28



TURNING CENTRES

31



TOOLROOM LATHES

32



Y-AXIS LATHES

34



ROBOTS & COBOTS

38



AUTOMATION



VF-SERIES VERTICAL MACHINING CENTRES

High-performance CNC mills

Haas Automation offers a wide range of CNC Vertical Machining Centres - one just right to meet the demands of your machine shop. Haas CNC machines offer an abundant menu of options, accessories and rotary products that allows you to fully tailor your machine.

Long before you start looking at options, you'll be impressed with the extensive standard features and capabilities packed into every machine. A Haas VMC is designed to provide the features and performance you need, making it the soundest investment you considered; providing more utility, flexibility and productivity than you've ever imagined.

**VF-1**

- Travels 508 x 406 x 508 mm
- 8,100 rpm • 40-Taper • 30 hp
- 20 Tool Carousel Changer
- (SMTC optional)

**VF-2**

- Travels 762 x 406 x 508 mm
- 8,100 rpm • 40-Taper • 30 hp
- 20 Tool Carousel Changer
- (SMTC optional)

**VF-2YT** EXTENDED Y-AXIS

- Travels 762 x 508 x 508 mm
- 8,100 rpm • 40-Taper • 30 hp
- 20 Tool Carousel Changer
- (SMTC optional)

**VF-3**

- Travels 1,016 x 508 x 635 mm
- 8,100 rpm • 40-Taper • 30 hp
- 20 Tool Carousel Changer
- (SMTC optional)

**VF-3YT** EXTENDED Y-AXIS 40/50 TAPER

- Travels 1,016 x 660 x 635 mm
- 8,100 rpm 40-Taper • 30 hp
- 20 Tool Carousel (SMTC option)
- 7,500 rpm 50-Taper
- 30+1 SMTC standard on 50-taper

**VF-4**

- Travels 1,270 x 508 x 635 mm
- 8,100 rpm • 40-Taper • 30 hp
- 20 Tool Carousel Changer
- (SMTC optional)

**VF-5** 40/50 TAPER

- Travels 1,270 x 660 x 635 mm
- 8,100 rpm 40-Taper • 30 hp
- 20 Tool Carousel (SMTC option)
- 7,500 rpm 50-Taper
- 30+1 SMTC standard on 50-taper

**VF-5XT** EXTENDED X-AXIS 40/50 TAPER

- Travels 1,524 x 660 x 635 mm
- 8,100 rpm 40-Taper • 30 hp
- 20 Tool Carousel (SMTC option)
- 7,500 rpm 50-Taper
- 30+1 SMTC standard on 50-taper

**VF-6** 40/50 TAPER

- Travels 1,626 x 813 x 762 mm
- 8,100 rpm 40-Taper • 30 hp
- 7,500 rpm 50-Taper • 30 hp
- 30+1 Side-Mount Tool Changer

**VF-7** 40/50 TAPER

- Travels 2,134 x 813 x 762 mm
- 8,100 rpm 40-Taper • 30 hp
- 7,500 rpm 50-Taper • 30 hp
- 30+1 Side-Mount Tool Changer

**VF-8** 40/50 TAPER

- Travels 1,626 x 1,016 x 762 mm
- 8,100 rpm 40-Taper • 30 hp
- 7,500 rpm 50-Taper • 30 hp
- 30+1 Side-Mount Tool Changer

**VF-9** 40/50 TAPER

- Travels 2,134 x 1,016 x 762 mm
- 8,100 rpm 40-Taper • 30 hp
- 7,500 rpm 50-Taper • 30 hp
- 30+1 Side-Mount Tool Changer

**VF-10** 40/50 TAPER

- Travels 3,048 x 813 x 762 mm
- 8,100 rpm 40-Taper • 30 hp
- 7,500 rpm 50-Taper • 30 hp
- 30+1 Side-Mount Tool Changer

**VF-11** 40/50 TAPER

- Travels 3,048 x 1,016 x 762 mm
- 8,100 rpm 40-Taper • 30 hp
- 7,500 rpm 50-Taper • 30 hp
- 30+1 Side-Mount Tool Changer

VF-12 40/50 TAPER

- Travels 3,810 x 813 x 762 mm
- 8,100 rpm 40-Taper • 30 hp
- 7,500 rpm 50-Taper • 30 hp
- 30+1 Side-Mount Tool Changer

VF-14 40/50 TAPER

- Travels 3,810 x 1016 x 762 mm
- 8,100 rpm 40-Taper • 30 hp
- 7,500 rpm 50-Taper • 30 hp
- 30+1 Side-Mount Tool Changer

SUPER SPEED VERTICALS

Next generation high-speed machining centres

The Haas high-performance Super Speed vertical machining centres provide the high spindle speeds, fast rapids, and quick tool changes necessary for high-volume production and reduced cycle times.

The VF-series Super Speed machines feature a 30+1 side-mount tool changer, with chip-to-chip changes in 2.4 seconds.

The Super Speed direct-drive 12,000 rpm spindle system couples the drive directly to the spindle, which results in better surface finishes, extreme thermal stability and very quiet operation.



VF-2SS **SUPER SPEED**

- 762 x 406 x 508 mm
- 12,000 rpm Spindle (15k opt.)
- 30+1 Side Mount Tool Changer
- 35.6 m/min Rapids



VF-2SSYT **SUPER SPEED EXTENDED Y-AXIS**

- 762 x 508 x 508 mm
- 12,000 rpm Spindle (15k opt.)
- 30+1 Side Mount Tool Changer
- 35.6 m/min Rapids



VF-3SS **SUPER SPEED**

- 1,016 x 508 x 635 mm
- 12,000 rpm Spindle (15k opt.)
- 30+1 Side Mount Tool Changer
- 35.6 m/min Rapids



VF-4SS **SUPER SPEED**

- 1,270 x 508 x 635 mm
- 12,000 rpm Spindle (15k opt.)
- 30+1 Side Mount Tool Changer
- 35.6 m/min Rapids



VF-5SS **SUPER SPEED**

- 1,270 x 660 x 635 mm
- 12,000 rpm Spindle (15k opt.)
- 30+1 Side Mount Tool Changer
- 30.5 m/min Rapids



VF-6SS **SUPER SPEED**

- 1,626 x 813 x 762 mm
- 12,000 rpm Spindle (15k opt.)
- 30+1 Side Mount Tool Changer
- 30.5 m/min Rapids



VF-7SS **SUPER SPEED**

- 2,134 x 813 x 762 mm
- 12,000 rpm Spindle (15k opt.)
- 30+1 Side Mount Tool Changer
- 30.5 m/min Rapids



VF-8SS **SUPER SPEED**

- 1,626 x 1,016 x 762 mm
- 12,000 rpm Spindle (15k opt.)
- 30+1 Side Mount Tool Changer
- 30.5 m/min Rapids

HIGH SPEED DRILL MILL/TAP

Compact high-speed machining centres

The DM and DT series compact, high-speed machining centres are built from proven Haas components and designs.



DT-1 DRILL AND TAP

- 508 x 406 x 394 mm
- 10,000 rpm Spindle • 30-Taper
- 20+1 Side Mount Tool Changer
- Rigid Tapping up to 5,000 rpm
- 61.0 m/min Rapids



DM-1 DRILL AND MILL

- 508 x 406 x 394mm
- 10,000 rpm Spindle • 40-Taper
- 18+1 Side Mount Tool Changer
- Rigid Tapping up to 5,000 rpm
- 61.0 m/min Rapids



DT-2 DRILL AND TAP

- 711 x 406 x 394mm
- 10,000 rpm Spindle • 30-Taper
- 20+1 Side Mount Tool Changer
- Rigid Tapping up to 5,000 rpm
- 61.0 m/min Rapids



DM-2 DRILL AND MILL

- 711 x 406 x 394mm
- 10,000 rpm Spindle • 40-Taper
- 18+1 Side Mount Tool Changer
- Rigid Tapping up to 5,000 rpm
- 61.0 m/min Rapids



DT-3 DRILL AND TAP

- 914 x 406 x 394mm
- 10,000 rpm Spindle • 30-Taper
- 20+1 Side Mount Tool Changer
- Rigid Tapping up to 5,000 rpm
- 61.0 m/min Rapids



DM-3 DRILL AND MILL

- 914 x 406 x 394mm
- 10,000 rpm Spindle • 40-Taper
- 18+1 Side Mount Tool Changer
- Rigid Tapping up to 5,000 rpm
- 61.0 m/min Rapids



The drill mill/tap machines feature 10,000 rpm spindles as standard (12k, 15k options and a 20k option for DT models) fast 61 m/min rapids, high axis accelerations (1G) and 1.8 second tool change times.

These compact machines can reduce cycle times by more than 20% compared to the already fast Haas Super Speed VF-2SS.





VM-SERIES MOULD MAKERS

Versatile machines for advanced mould making

We've taken our industry-leading VF-Series machines and created custom configurations to boost productivity for mould making, tool and die work, and other high-precision industries.



VM-2 MOULD MAKER

- 762 x 508 x 508 mm
- 12,000 rpm Spindle (15k & 30k opt.)
- 30+1 Side Mount Tool Changer
- 18.0 m/min Rapids



VM-3 MOULD MAKER

- 1,016 x 660 x 635 mm
- 12,000 rpm Spindle (15k & 30k opt.)
- 30+1 Side Mount Tool Changer
- 18.0 m/min Rapids



VM-6 MOULD MAKER

- 1,626 x 813 x 762 mm
- 12,000 rpm (15k & 30k opt.)
- 30+1 Side Mount Tool Changer
- 15.2 m/min Rapids



VM-8 MOULD MAKER

- 1,626 x 1,016 x 762 mm
- 12,000 rpm (15k & 30k opt.)
- 30+1 Side Mount Tool Changer
- 15.2 m/min Rapids

5-AXIS ARTICULATING SPINDLE

Precision and performance for complex machining

Haas VR Series vertical machining centres are ideal when your 5-axis parts are too large to rotate using traditional rotary tables and trunnions. Each VR Series machine features a large T-slot table to easily support large workpieces and fixtures, and a powerful 2-axis gimbaled spindle head to access nearly any angle for complex shapes, undercuts, and 5-side machining.

Haas VR Series VMCs are cost-effective solutions for simultaneous 5-axis machining and 3+2 machining of large parts, such as airframe components, layup moulds, and composite structures.



VR-8 5-AXIS

- Travels 1,626 x 1,016 x 1,067 mm
- 20,000 rpm Spindle
- HSK-A63 • 24 hp
- 50+1 Side-Mount Tool Changer



VR-9 5-AXIS

- Travels 2,134 x 1,016 x 1,067 mm
- 20,000 rpm Spindle
- HSK-A63 • 24 hp
- 50+1 Side-Mount Tool Changer



VR-11 5-AXIS

- Travels 3,048 x 1,016 x 1,067 mm
- 20,000 rpm Spindle
- HSK-A63 • 24 hp
- 50+1 Side-Mount Tool Changer

VR-14 5-AXIS

- Travels 3,810 x 1,016 x 1,067 mm
- 20,000 rpm Spindle
- HSK-A63 • 24 hp
- 50+1 Side-Mount Tool Changer

REDESIGNED MINI MILLS

Compact high-performance machining centres

Breaking the traditional link between machine performance, size, and cost, the redesigned Mini Mill Series delivers 40-taper performance in compact packages at unbeatable prices.

The all new Mini Mill features enhanced FEA-optimized castings, increased travels, and faster 8,000 rpm spindle speeds, resulting in higher production output. It includes a new Y-axis washdown nozzle for improved chip flow and a 170 litre external coolant tank for simplified maintenance and the 10 pocket tool changer (20 pocket opt.) increases flexibility.

Ideal for space-constrained high-production shops, the new Mini Mills have opening side windows and seamlessly interface with Haas robot packages or the Compact APL for automation.

The Super Mini Mill features a 10,000 rpm spindle, a 30+1 side mount tool changer and even faster 30.5 m/min rapids.



MINI MILL

- 406 x 356 x 381 mm
- 8,000 rpm spindle
- 40-taper • 7.5 hp
- 10 or 20 pocket tool changer



SUPER MINI MILL

- 406 x 356 x 381 mm
- 10,000 rpm (15k opt.)
- 30.5 m/min rapids
- 30+1 SMTC



CM-1 COMPACT MILL

- 305 x 254 x 356 mm
- 30,000 rpm (50k opt.)
- 20-taper • 5 hp
- 19.2 m/min rapids

POCKET MILL

Full 40-taper machining power in an ultra compact footprint

The new Pocket Mill delivers true 40-taper machining performance in an exceptionally compact footprint, removing the traditional compromise between machine size, capability and cost.

Despite its small overall size, the Pocket Mill offers a practical working envelope with travels of 305 x 305 x 381 mm. The table size is 711 x 284 mm, providing solid support for precision components and fixtures in space constrained workshops.

Its spindle runs at up to 4,000 rpm as standard, delivering consistent torque and smooth cutting performance for everyday production machining. Combined with the rigidity of the machine structure and the full Haas control, the Pocket Mill is designed for reliable, repeatable results.

Ideal for manufacturers looking to add productive capacity without expanding floor space, the Pocket Mill brings compact efficiency and proven CNC performance into an accessible, production ready package.



POCKET MILL

- 305 x 305 x 381 mm
- 4,000 rpm spindle
- 40-taper • 7.5 hp
- 10 pocket tool changer

FUND YOUR NEXT STEP TODAY



ASSET FINANCING TO HELP YOUR BUSINESS

Asset finance can be used by your business to purchase the equipment it needs to grow without overstretching its finances. The benefits of asset finance allow you to expand your business and fulfil new orders, whilst protecting working capital and any existing credit lines. Depending on the nature of your business, the assets concerned could be upgrades to equipment, machinery and company vehicles.

FUNDING OPTIONS

Hire purchase

We can offer hire purchase contracts, which give you immediate access to assets that you will own outright after completing a series of payments. This method involves you paying a deposit as well as fixed monthly instalments for the agreed term.

Equipment leasing

This makes for a straightforward leasing agreement in which you rent the assets you need, but do not own them at the end of the term.

Asset refinancing

These agreements are aimed at businesses that have already invested in equipment and which now need to release some of the capital tied up in those assets.

TAKE THE NEXT STEP

Navigating your way through the different forms of lending banks and companies have to offer can be overbearing. Get in touch and we'll be able to help you find the perfect option to finance your business and let you take the next step.



FUND YOUR NEXT STEP TODAY

Haas Financial Services is a trading name of Asset Financial Services Ltd and Asset Financial Engineering Ltd. Asset Financial Services Ltd is a broker not a lender and an appointed representative of AFS Compliance Ltd, which is authorised and regulated by the Financial Conduct Authority No. 625035. Asset Financial Services Ltd is a franchisee of Asset Finance Solutions (UK) Ltd. Haas Automation Ltd is an introducer appointed representative of Asset Financial Services Ltd.



Haas Financial Services

Convent Road
Norwich
NR2 1PA

01603 227838

finance@haas.co.uk

Asset Financial Services Ltd
trading as Haas Financial Services
Registered No. 12373760

Asset Financial Engineering Ltd
trading as Haas Financial Services
Registered No. 12379851





Haas
F1 Team

WILL 55M4-32 Series VT55P



haas.co.uk

TOOLROOM MILLS

TM-series CNC toolroom verticals

The TM Series Toolroom Mills are the true definition of value, providing full CNC capabilities, including available 4th- and 5th-axis functionality, at affordable prices. They combine the precision control of the Haas CNC system with the convenience of a manual machine, and are easy to learn and operate even without knowledge of G-code.

The TM-P models include a 10-pocket automatic tool changer, a faster spindle, and higher rapids.



TM-0P TOOL CHANGER

- 508 x 305 x 406 mm
- 6,000 rpm Spindle
- 40-Taper • 7.5 hp
- 10 Tool Carousel Changer



TM-1P TOOL CHANGER

- 762 x 406 x 406 mm
- 6,000 rpm Spindle
- 40-Taper • 7.5 hp
- 10 Tool Carousel Changer



TM-2P TOOL CHANGER

- 1,016 x 406 x 406 mm
- 6,000 rpm Spindle
- 40-Taper • 7.5 hp
- 10 Tool Carousel Changer



TM-0

- 508 x 305 x 406 mm
- Table 975 x 267 mm
- 4,000 rpm Spindle
- 40-Taper • 7.5 hp



TM-1

- 762 x 406 x 406 mm
- Table 1,213 x 267 mm
- 4,000 rpm Spindle
- 40-Taper • 7.5 hp



TM-2

- 1,016 x 406 x 406 mm
- Table 1,466 x 267 mm
- 4,000 rpm Spindle
- 40-Taper • 7.5 hp



5-AXIS TRUNNION VMCs

Affordable 5-axis flexibility

The Haas Trunnion Series machines are versatile 5-axis machining centres that provide full simultaneous 5-axis motion for machining complex parts, or can position a workpiece to almost any angle for multi-side machining.

The VF-TR models have a removable dual-axis trunnion mounted to the standard T-slot table, which provides the flexibility to run the machine with or without the trunnion table installed.



VF-2TR 5-AXIS

- Travels 762 x 406 x 508 mm
- Dual-Axis Trunnion Table
- $\pm 120^\circ$ Tilt, 360° Rotation
- 8,100 rpm Spindle
- 40-Taper • 30 hp
- Side-Mount Tool Changer



VF-5TR 5-AXIS 40/50 TAPER

- Travels 1,270 x 660 x 635 mm
- Dual-Axis Trunnion Table
- $\pm 120^\circ$ Tilt, 360° Rotation
- 8,100 rpm 40-Taper • 30 hp
- 7,500 rpm 50-Taper • 30 hp
- Side-Mount Tool Changer



VF-6TR 5-AXIS 40/50 TAPER

- Travels 1,626 x 813 x 762 mm
- Dual-Axis Trunnion Table
- $\pm 120^\circ$ Tilt, 360° Rotation
- 8,100 rpm 40-Taper • 30 hp
- 7,500 rpm 50-Taper • 30 hp
- Side-Mount Tool Changer

The VF-2TR features a TR-160 with a 160 mm platter (250 mm option also available). The VF-5TR features a TR-210 with a 210 mm platter (350 mm option also available), and the VF-6TR features a TR-310 with a 310 mm platter.

The VF-5TR and VF-6TR models are available in both 40-taper 8,100 rpm and 50-taper 7,500 rpm configurations. Super Speed spindle options are also available.



UNIVERSAL MACHINING CENTRES

The best selling 5-axis machines

Haas Universal Machining Centres have transformed the machine tool industry by making 5-axis machining simple, affordable, and accessible. Available in a range of sizes and configurations, they are ideal for job shops, reducing setups and improving accuracy on complex parts.

Innovative features such as Tool Centre Point Control (TCP) and Dynamic Work Offsets (DWO) enhance workflow and productivity. The Super Speed models deliver even greater performance with a faster spindle, high-speed tool changer, and quicker trunnion table.



UMC-400 5-AXIS

- Travels 432 x 279 x 330 mm
- Compact Footprint 2.1 x 2.1 m
- 230 mm Platter • 40-Taper
- 8,100 rpm Spindle (10k & 15k opt.)
- 30+1 SMTC (50+1 & 70+1 opt.)



UMC-400SS SUPER SPEED 5-AXIS

- Travels 432 x 279 x 330 mm
- Compact Footprint 2.1 x 2.1 m
- 230 mm Platter • 40-Taper
- 12,000 rpm (15k opt.)
- 30+1 SMTC (50+1 & 70+1 opt.)



UMC-500 5-AXIS

- Travels 610 x 406 x 406 mm
- Dual-Axis Trunnion • 50°/Sec Tilt
- 400 mm Platter • 40-Taper
- 8,100 rpm Spindle (10k & 15k opt.)
- 30+1 SMTC (50+1 & 70+1 opt.)



UMC-500SS SUPER SPEED 5-AXIS

- Travels 610 x 406 x 406 mm
- Dual-Axis Trunnion • 179°/Sec Tilt
- 400 mm Platter • 40-Taper
- 12,000 rpm (15k opt.)
- 30+1 SMTC (50+1 & 70+1 opt.)



UMC-750 5-AXIS

- 762 x 508 x 508 mm
- Dual-Axis Trunnion • 50°/Sec Tilt
- 8,100 rpm Spindle (10k & 15k opt.)
- 500 mm Platter • 40-Taper
- 30+1 SMTC (50+1 & 70+1 opt.)



UMC-750SS SUPER SPEED 5-AXIS

- 762 x 508 x 508 mm
- Dual-Axis Trunnion • 170°/Sec Tilt
- 12,000 rpm Spindle (15k opt.)
- 500 mm Platter • 40-Taper
- 30+1 SMTC (50+1 & 70+1 opt.)



UMC-1000 5-AXIS

- Travels 1,016 x 635 x 635 mm
- Dual-Axis Trunnion • 50°/Sec Tilt
- 8,100 rpm Spindle (10k & 15k opt.)
- 635 mm Platter • 40-Taper
- 50+1 SMTC (70+1 opt.)



UMC-1000SS SUPER SPEED 5-AXIS

- Travels 1,016 x 635 x 635 mm
- Dual-Axis Trunnion 170°/Sec Tilt
- 12,000 rpm (15k opt.)
- 635 mm Platter • 40-Taper
- 50+1 SMTC (70+1 opt.)



UMC-1250 5-AXIS

- Travels 1,270 x 762 x 711 mm
- Dual-Axis Trunnion • 50°/Sec Tilt
- 8,100 rpm Spindle (10k & 15k opt.)
- 762 mm Platter • 40-Taper
- 50+1 SMTC (70+1 opt.)



UMC-1250SS SUPER SPEED 5-AXIS

- Travels 1,270 x 762 x 711 mm
- Dual-Axis Trunnion 170°/Sec Tilt
- 12,000 rpm (15k opt.)
- 762 mm Platter • 40-Taper
- 50+1 SMTC (70+1 opt.)



UMC-1500-DUO **5-AXIS**

- Travels 1,524 x 508 x 508 mm
- Dual-Axis Trunnion • 50°/Sec Tilt
- 813 mm x 457 mm T-slot table
- 8,100 rpm Spindle (10k & 15k opt)
- 500 mm Platter • 40-Taper
- 30+1 SMTC (50+1 & 70+1 opt.)



UMC-1500SS-DUO **SUPER SPEED 5-AXIS**

- Travels 1,524 x 508 x 508 mm
- Dual-Axis Trunnion • 170°/Sec Tilt
- 813 mm x 457 mm T-slot table
- 12,000 rpm Spindle (15k opt)
- 500 mm Platter • 40-Taper
- 30+1 SMTC (50+1 & 70+1 opt.)

Pallet Pools

Add a pallet-pool to your UMC-Series machine to take your production to the next level. With options for 6, 10 or 20 additional pallets, you can be sure your machine will be running "lights out".

TRUNNION & TILTING TABLES

2-axis trunnion & tilting rotary tables

If you need a 5-axis solution for your 3-axis mill, look to the Haas trunnion and tilting rotary tables for a simple bolt-on solution for machining complex parts. The Haas dual-axis trunnion tables bolt directly to the mill's table to provide 5-axis simultaneous motion, or position parts to nearly any angle for multi-sided machining.



TR70

HIGH SPEED
TILTING 5-AXIS

- 70 mm Platter
- Tilt $\pm 120^\circ$ Rotation 360°
- 410°/Sec (Tilt)
- 410°/Sec (Rotary)
- Resolution 0.001°



TR100

SUPER HIGH SPEED
TILTING 5-AXIS

- 100 mm Platter
- Tilt $\pm 120^\circ$ Rotation 360°
- 1,000°/Sec (Tilt)
- 1,000°/Sec (Rotary)
- Resolution 0.001°



TR160

TILTING 5-AXIS

- 160 mm Platter
- Tilt $\pm 120^\circ$ Rotation 360°
- 104°/Sec (Tilt)
- 104°/Sec (Rotary)
- Resolution 0.001°



TR210

TILTING 5-AXIS

- 230 mm Platter
- Tilt $\pm 120^\circ$ Rotation 360°
- 80°/Sec (Tilt)
- 100°/Sec (Rotary)
- Resolution 0.001°



TR310

TILTING 5-AXIS

- 310 mm Platter
- Tilt $\pm 120^\circ$ Rotation 360°
- 50°/Sec (Tilt)
- 75°/Sec (Rotary)
- Resolution 0.001°



TR160

TRUNNION 5-AXIS

- 160 mm Platter (250 mm opt.)
- Tilt $\pm 120^\circ$ Rotation 360°
- 80°/Sec (Tilt)
- 80°/Sec (Rotary)

TR160-2 with twin platter available



TR200Y

TRUNNION 5-AXIS

- 200 mm Platter
- Tilt $\pm 120^\circ$ Rotation 360°
- 100°/Sec (Tilt)
- 130°/Sec (Rotary)
- Resolution 0.001°



TR210

TRUNNION 5-AXIS

- 210 mm Platter (350 mm opt.)
- Tilt $\pm 120^\circ$ Rotation 360°
- 60°/Sec (Tilt)
- 60°/Sec (Rotary)
- Resolution 0.001°



TR310

TRUNNION 5-AXIS

- 310 mm Platter
- Tilt $\pm 120^\circ$ Rotation 360°
- 50°/Sec (Tilt)
- 50°/Sec (Rotary)
- Resolution 0.001°



TR500SS

HIGH SPEED
TRUNNION 5-AXIS

- 500 mm Platter
- Tilt $\pm 120^\circ$ Rotation 360°
- 170°/Sec (Tilt)
- 179°/Sec (Rotary)
- Resolution 0.001°



MAKING 5-AXIS EASIER

Dynamic Work Offsets and Tool Centre Point Control

Dynamic Work Offsets (DWO) and Tool Centre Point Control (TCPC) are software features in the Next Generation Control that greatly simplify multi-axis machining when using 4- and 5-axis rotary tables. DWO/TCPC eliminates the need to locate the workholding in precisely the same place, or repost the part program every time a job is set up.

With DWO/TCPC the Haas control recognises the part position and creates the correct toolpath, regardless of the workholding position, greatly reducing set-up time or reposting time.



WITH DWO/TCPC THERE'S NO NEED TO:

- ✗ Place the part in the exact same location every time
- ✗ Repost the program when the fixture changes
- ✗ Repost the program if the job moves to another Haas machine

DWO/TCPC CHANGES EVERYTHING:

- ✓ Save time on programming and setup
- ✓ Reduce fixturing costs
- ✓ Increase your number of multi-axis operators
- ✓ Increase your productivity and profits

ROTARY TABLES

5C collet indexers

The Haas HA5C series is the ideal choice for holding smaller parts. Clamp your parts using standard 5C collets, or chuck them by threading a 3-jaw chuck to the spindle nose. Collets can be closed with your choice of a manual handle or an optional air collet closer.

The HA5C series is easy to program, interface, and set up. With over three decades of refinement, the Haas HA5C is the industry benchmark for quality, accuracy, and dependability.

Platter-style rotary tables

for holding medium to large parts or fixtures, the HRT series of T-slotted rotary tables is the answer. Available with platter sizes from 100 mm to 1,000 mm, these rugged, heavy-duty tables can be mounted vertically or horizontally for added versatility.

Chucks and fixtures can easily be bolted to the table using the six precision T-slots, and large through-holes allow for bar feeding and special fixture-locating requirements.



HA5C 4-AXIS

- Torque 81 Nm
- 410°/sec
- Resolution 0.001°



HA5C2 4-AXIS

- Torque 34 Nm
- 200°/sec
- Resolution 0.001°



HA5C3 4-AXIS

- Torque 34 Nm
- 200°/sec
- Resolution 0.001°



HA5C4 4-AXIS

- Torque 34 Nm
- 200°/sec
- Resolution 0.001°



T5C TILTING 5-AXIS

- Tilt $\pm 120^\circ$ Rotation 360°
- 410°/sec (Rotary)
- 60°/sec (Tilt)
- Resolution 0.001°



T5C2 TILTING 5-AXIS

- Tilt $\pm 120^\circ$ Rotation 360°
- 200°/sec (Rotary)
- 60°/sec (Tilt)
- Resolution 0.001°



T5C3 TILTING 5-AXIS

- Tilt $\pm 120^\circ$ Rotation 360°
- 200°/sec (Rotary)
- 60°/sec (Tilt)
- Resolution 0.001°



T5C4 TILTING 5-AXIS

- Tilt $\pm 120^\circ$ Rotation 360°
- 200°/sec (Rotary)
- 60°/sec (Tilt)
- Resolution 0.001°



HA2TS 4-AXIS TWIN TAILSTOCK

- Dual Spindle
- Twin Pneumatic Tailstocks
- Precision T-Slot Baseplate



HA5CS 4-AXIS SUPER HIGH SPEED

- Torque 27 Nm
- 725°/sec
- Resolution 0.001°



HRTA5 4-AXIS A1 SPINDLE NOSE

- A1-5 Spindle Nose
- 130°/sec
- Repeatability 10 arc-sec



HRTA6 4-AXIS A1 SPINDLE NOSE

- A1-6 Spindle Nose
- 100°/sec
- Repeatability 10 arc-sec



HRT100 4-AXIS

- 100 mm Platter
- 300°/sec
- Resolution 0.001°



HRT160 4-AXIS

- 160 mm Platter
- 130°/sec
- Resolution 0.001°



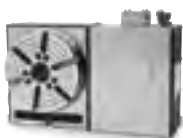
HRT160SS 4-AXIS HIGH SPEED

- 160 mm Platter
- 500°/sec
- Resolution 0.001°



HRT160SP 4-AXIS COMPACT

- 160 mm Platter
- 130°/sec
- Resolution 0.001°



HRT210 4-AXIS

- 210 mm Platter
- 100°/sec
- Resolution 0.001°



HRT210SS 4-AXIS HIGH SPEED

- 210 mm Platter
- 490°/sec
- Resolution 0.001°



HRT210SP 4-AXIS COMPACT

- 210 mm Platter
- 100°/sec
- Resolution 0.001°



HRT1602 4-AXIS

- 160 mm Platters
- 80°/sec
- Resolution 0.001°



TH240 4-AXIS THROUGH HOLE

- 240 mm Platter • 100°/sec
- 50.8 mm Through-hole
- Resolution 0.001°



HRT310 4-AXIS

- 310 mm Platter
- 75°/sec
- Resolution 0.001°



HRT310SP 4-AXIS COMPACT

- 310 mm Platter
- 75°/sec
- Resolution 0.001°



HRT310SS 4-AXIS HIGH SPEED

- 310 mm Platter • 240°/sec



TH450 4-AXIS THROUGH HOLE

- 450 mm Platter • 75°/sec
- 82.55 mm Through-hole
- Resolution 0.001°



HRT450 4-AXIS

- 450 mm Platter
- 50°/sec
- Resolution 0.001°



HRT630 4-AXIS

- 630 mm Platter
- 50°/sec
- Resolution 0.001°



HRT1000 4-AXIS

- 1,000 mm Platter
- 35°/sec

HRT800 also available

DESIGNED, BUILT & PROGRAMMED BY HAAS

Simple Navigation

Navigation is fast and simple, with consistent functionality of the cursor keys, and intuitive icons throughout the user experience.



Touchscreen

Our Touchscreen interface speeds up programming and simplifies control navigation, by allowing window selection, data entry, and other control functions without using the standard keypad.



Accessible Icons

The enhanced operator Help interface features easy-to-understand icons that provide quick access to information about any feature or option within the control.



HaasConnect

HaasConnect is a machine monitoring system that provides instant alerts for machine status via email. The Haas Next Generation Control has the ability to send you, and others you designate, email notifications about the operating status of your Haas machine. Set up is simple and easy through the MyHaas Portal at HaasCNC.com. HaasConnect is free with every new Haas machine.



Haas Drop

HaasDrop Wireless File Transfer is a fast and convenient method for sending images, videos, and even program files from a mobile device directly to the control on a Haas CNC machine. Simply download the free app for Android and iOS devices, and start transferring files directly to the Haas control.



Industry 4.0 & MTConnect

Industry 4.0 compatibility means the Haas control is ready for smart factory integration. Machines, sensors, and software can all communicate in real time, allowing data sharing, automation, and efficient process control. The MTConnect protocol is an open standard that lets Haas machines send performance data, such as spindle load, feed rate, and cycle times, to monitoring software.

CNC machining is complex

Your control shouldn't be

Rotary Set Up

Set up and configure your rotary table with simple, on-screen dialogue and icons, and quickly designate rotary axes to correspond to the rotary table's orientation.



Programming

The Haas Visual Programming System (VPS) lets you quickly create G-code programs for both basic and complex part features and operations, using form-like templates to define the features.



Safe Run

See how the Safe Run feature in the Haas control can detect unexpected contact, and instantly stop the machine to prevent significant damage.



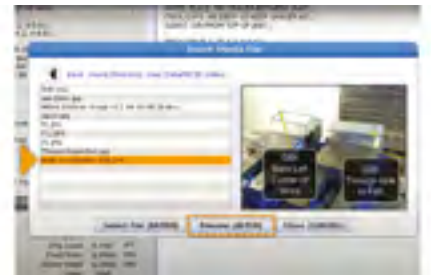
On-Board Memory

The Haas control has 1 GB of standard program memory. This means you'll have the ability to store many programs in the control, eliminating the need for an external device for program backup. Large programs for complex moulds, for example, can now be run from memory, doing away with the connectivity issues often experienced when running from DNC or FNC. Expandable to 64 GB.



WiFi/Ethernet

All Haas machines come standard with built-in Ethernet and WiFi connectivity for fast, wired or wireless communication between the Haas control and a local area network. Use WiFi to easily share and transfer files wirelessly, and monitor your machine remotely via HaasConnect mobile machine monitoring. It is easily set up through the Haas control, and supports Netshare capabilities.



Media Display Function

Easily place pictures and videos in your program to make sure your operators have all the information they need to run the job correctly. The Haas M130 Media Display M-Code is a powerful tool for communicating with machine operators and programmers directly from the Haas control as a program runs.



HORIZONTAL MACHINING CENTRES

Get the horizontal advantage

The EC Series HMCs are rugged 40 and 50-taper horizontal machining centres with large work cubes and a maximum part capacity from 400 kg to 4,500 kg. The machines are available with a full 4-axis rotary platter integrated into the T-slot table to provide access to four sides of a part or tombstone, a 5-axis model is also available. The UMC-1600-H features a 630 mm rotary table mounted on its integrated 4th-axis platter to provide 3+2 positioning and full 5-axis motion for machining large parts.



EC-400 4-AXIS

- 559 x 635 x 559 mm
- 8,100 rpm (10k, 12k, 15k opt.)
- 40-Taper • 30 hp
- 50+1 SMTC (100+1 opt.)
- Dual 400mm pallet changer



EC-500 4-AXIS

- 813 x 635 x 711 mm
- 8,100 rpm (10k, 12k, 15k opt.)
- 40-Taper • 30 hp
- 50+1 SMTC (100+1 opt.)
- Dual 500mm pallet changer



EC-500/50 4-AXIS 50-TAPER

- 813 x 635 x 711 mm
- 7,500 rpm (10k opt.)
- 50-Taper • 30 hp
- 50+1 Side Mount Tool Changer
- Dual 500mm pallet changer



EC-630 4-AXIS 50-TAPER

- 1016 x 940 x 1016 mm
- 7,500 rpm (10k opt.)
- 50-Taper • 30 hp
- 50+1 Side Mount Tool Changer
- Dual 630mm pallet changer



EC-1600 50-TAPER

- 1,626 x 1,270 x 813 mm
- 7,500 rpm (10k opt.)
- 50-Taper • 30 hp
- 50+1 Side Mount Tool Changer



EC-1600ZT 50-TAPER

- 1,626 x 1,270 x 1,016 mm
- 7,500 rpm (10k opt.)
- 50-Taper • 30 hp
- 50+1 Side Mount Tool Changer



UMC-1600-H 5-AXIS 50-TAPER

- 1,626 x 1,270 x 1,016 mm
- 7,500 rpm (10k opt.)
- 630 mm rotary platter
- 257 mm through bore
- 50+1 Side Mount Tool Changer



Our 6+1 pallet pool for the EC-400 is perfect for high-volume production runs, or high-mix/low-volume machining. The pallets can be scheduled individually according to priority and sequencing requirements, allowing high-priority parts to be machined first or staged more often.

Completed pallets are returned automatically to the holding location, or can be sequenced to a protected operator station for immediate unloading and re-loading.



ST-SERIES LATHES

High-performance turning centres

The Haas ST Series high-performance turning centres were designed from the ground up to provide setup flexibility, extreme rigidity, and high thermal stability. The result is high accuracy, consistent repeatability and superb surface finishes, while maintaining dependability and value-based pricing.

The Haas ST-Series turning centres offer the best combination of performance and value in their class and are available with a wide selection of high-productivity options, including bar feeders and auto parts loaders.



ST-10

- Max Cut Ø 304 x L 310 mm
- Bar Capacity 44 mm
- A2-5 • 6,000 rpm • 15 hp
- Chuck 165 mm

ST-10L LONG BED

- Max Cut Ø 304 x L 791 mm
- Bar Capacity 44 mm
- A2-5 • 6,000 rpm • 15 hp
- Chuck 165 mm



ST-15 **BIG BORE**

- Max Cut Ø 304 x L 310 mm
- Bar Capacity 64 mm
- A2-6 • 4,000 rpm • 20 hp
- Chuck 210 mm



ST-15L **BIG BORE LONG BED**

- Max Cut Ø 304 x L 791 mm
- Bar Capacity 64 mm
- A2-6 • 4,000 rpm • 20 hp
- Chuck 210 mm



ST-20

- Max Cut Ø 330 x L 540 mm
- Bar Capacity 64 mm
- A2-6 • 4,000 rpm • 20 hp
- Chuck 210 mm



ST-20L **LONG BED**

- Max Cut Ø 330 x L 1,080 mm
- Bar Capacity 64 mm
- A2-6 • 4,000 rpm • 20 hp
- Chuck 210 mm



ST-25 **BIG BORE**

- Max Cut Ø 330 x L 540 mm
- Bar Capacity 76 mm
- A2-6 • 3,400 rpm • 30 hp
- Chuck 254 mm



ST-25L **BIG BORE LONG BED**

- Max Cut Ø 330 x L 1,080 mm
- Bar Capacity 76 mm
- A2-6 • 3,400 rpm • 30 hp
- Chuck 254 mm



ST-28

- Max Cut Ø 330 x L 572 mm
- Bar Capacity 102 mm
- A2-8 • 3,200 rpm • 40 hp
- Chuck 305 mm



ST-28L **LONG BED**

- Max Cut Ø 330 x L 1,080 mm
- Bar Capacity 102 mm
- A2-8 • 3,200 rpm • 40 hp
- Chuck 305 mm



ST-30

- Max Cut Ø 382 x L 760 mm
- Bar Capacity 76 mm
- A2-6 • 3,400 rpm • 30 hp
- Chuck 254 mm



ST-30L **LONG BED**

- Max Cut Ø 442 x L 1,520 mm
- Bar Capacity 76 mm
- A2-6 • 3,400 rpm • 30 hp
- Chuck 254 mm



ST-35 **BIG BORE**

- Max Cut Ø 382 x L 760 mm
- Bar Capacity 102 mm
- A2-8 • 3,200 rpm • 40 hp
- Chuck 305 mm



ST-35L **BIG BORE LONG BED**

- Max Cut Ø 442 x L 1,520 mm
- Bar Capacity 102 mm
- A2-8 • 3,200 rpm • 40 hp
- Chuck 305 mm



ST-40S **SHORT BED**

- Max Cut Ø 762 x L 660 mm
- Bar Capacity 102 mm
- A2-8 • 2,400 rpm
- 40 hp (55 hp opt.) • Chuck 381 mm



ST-40

- Max Cut Ø 762 x L 1,065 mm
- Bar Capacity 102 mm
- A2-8 • 2,400 rpm
- 40 hp (55 hp opt.) • Chuck 381 mm



ST-40L **LONG BED**

- Max Cut Ø 648 x L 2,000 mm
- Bar Capacity 102 mm
- A2-8 • 2,400 rpm
- 40 hp (55 hp opt.) • Chuck 381 mm

ST-45L **BIG BORE LONG BED**

- Max Cut Ø 648 x L 2,000 mm
- Spindle Bore 178 mm
- A2-11 • 40 hp (55 hp opt.)
- 1,400 rpm

LARGE THROUGH-BORE LATHES

High-performance big-bore turning centres

ST-45 BIG BORE

- Max Cut Ø 762 x L 1,065 mm
- Spindle Bore 178 mm
- A2-11 • 40 hp (55 hp opt.)
- 1,400 rpm

ST-45S BIG BORE SHORT BED

- Max Cut Ø 762 x L 660 mm
- Spindle Bore 178 mm
- A2-11 • 40 hp (55 hp opt.)
- 1,400 rpm

ST-45L BIG BORE LONG BED

- Max Cut Ø 648 x L 2,000 mm
- Spindle Bore 178 mm
- A2-11 • 40 hp (55 hp opt.)
- 1,400 rpm



TOOLROOM LATHES

The new generation TL-Series

The TL-1 and TL-2 Toolroom Lathes have undergone a complete redesign, with new enclosures and better overall performance.

Both machines have an A2-5 spindle nose with a 58 mm bore and come with a 203 mm 3-jaw manual chuck.

The spindles are powered by a 10 hp motor, and spin to 1,800 rpm, with a 3,000-rpm option.

Rapids have increased to 11.4 m/min on both X and Z axes, and an optional manual tailstock is available for additional part support.



TL-1 TOOLROOM

- Max Cut Ø 406 x L 762 mm
- Spindle Bore 58 mm
- 10 hp • A2-5
- 1,800 rpm (3k opt.)

TL-2 TOOLROOM

- Max Cut Ø 406 x L 1,219 mm
- Spindle Bore 58 mm
- 10 hp • A2-5
- 1,800 rpm (3k opt.)

DUAL-SPINDLE/Y-AXIS TURNING CENTRES

“Done-In-One” solution for multi-op parts

DS-30Y DUAL SPINDLE Y-AXIS

• 349 x 826 mm max capacity



MAIN SPINDLE:

10" (254 mm) Chuck
4500 rpm
A2-6 Spindle Nose
76 mm Bar Capacity



SECOND SPINDLE:

8.3" (210 mm) Chuck
4000 rpm
A2-5 Spindle Nose
46 mm Bore (non-through)

The DS-Series Y-axis turning centres combine dual-spindle turning with Y-axis, C-axis, and live tooling to create a powerful “done-in-one” machining solution for any shop.

Off-centre milling, drilling, and tapping operations are possible for increased machining capabilities.

They come standard with a 12-station BMT65 turret and synchronized C-axis for versatile 4-axis capability. The opposed spindles support fully synchronised turning, and allow on-the-fly part pass-off to reduce cycle times.

The DS-Series turning centres have a medium footprint, yet provide a generous work envelope.

DS-20Y DUAL SPINDLE Y-AXIS

• 298 x 572 mm max capacity



MAIN SPINDLE:

8.3" (210 mm) Chuck
4000 rpm
A2-6 Spindle Nose
64 mm Bar Capacity



SECOND SPINDLE:

6.5" (165 mm) Chuck
5000 rpm
A2-5 Spindle Nose
46 mm Bore (non-through)

DS-25Y DUAL SPINDLE Y-AXIS

• 298 x 572 mm max capacity



MAIN SPINDLE:

10" (254 mm) Chuck
3400 rpm
A2-6 Spindle Nose
76 mm Bar Capacity



SECOND SPINDLE:

6.5" (165 mm) Chuck
5000 rpm
A2-5 Spindle Nose
46 mm Bore (non-through)



Y-AXIS TURNING CENTRES

Multiple operations on a single machine

The Haas Y-axis lathes provide the ability to turn and mill complex parts and perform multiple operations on a single machine – increasing throughput, reducing handling, and improving part accuracy. The lathes have ± 51 mm Y-axis (ST-40Y & ST-45Y have ± 76 mm Y-axis) and a full C-axis that provides interpolated bidirectional motion at precise speeds and feeds for part positioning and repeatability.

BMT45 • BMT65 • BMT75 Turrets

The Haas 12-station BMT turrets with live tooling lets you perform secondary operations – milling, drilling, slotting, and tapping – on the face of the part and around the perimeter.

The BMT system provides increased rigidity, superior cutting performance, longer tool life, and better tool clearance. The BMT turret offers a half-station indexing option that increases your available tool stations to 24, with 12 stations able to accept driven tools.



ST-10Y Y-AXIS

- Max Cut Ø 240 x L 310 mm
- Bar Capacity 44 mm
- 165 mm Chuck • 6,000 rpm
- 6,000 rpm Live Tooling w/C axis



ST-10LY LONG BED Y-AXIS

- Max Cut Ø 240 x L 791 mm
- Bar Capacity 44 mm
- 165 mm Chuck • 6,000 rpm
- 6,000 rpm Live Tooling w/C axis



ST-15Y **BIG BORE** **Y-AXIS**

- Max Cut Ø 240 x L 310 mm
- Bar Capacity 64 mm
- 210 mm Chuck • 4,000 rpm
- 6,000 rpm Live Tooling w/C axis



ST-15LY **BIG BORE** **LONG BED** **Y-AXIS**

- Max Cut Ø 240 x L 791 mm
- Bar Capacity 64 mm
- 210 mm Chuck • 4,000 rpm
- 6,000 rpm Live Tooling w/C axis



ST-20Y **Y-AXIS**

- Max Cut Ø 298 x L 468 mm
- Bar Capacity 64 mm • BMT65
- 210 mm Chuck • 4,000 rpm
- 6,000 rpm Live Tooling w/C axis



ST-20LY **LONG BED** **Y-AXIS**

- Max Cut Ø 298 x L 1,015 mm
- ±51.0 mm Y-Axis • BMT65
- 210 mm Chuck • 4,000 rpm
- 6,000 rpm Live Tooling w/C axis



ST-25Y **Y-AXIS**

- Max Cut Ø 298 x L 468 mm
- Bar Capacity 76 mm • BMT65
- 254 mm Chuck • 3,400 rpm • 30 hp
- 6,000 rpm Live Tooling w/C axis



ST-25LY **BIG BORE** **LONG BED** **Y-AXIS**

- Max Cut Ø 298 x L 1,015 mm
- Bar Capacity 76 mm • BMT65
- 254 mm Chuck • 3,400 rpm • 30 hp
- 6,000 rpm Live Tooling w/C axis



ST-28Y **Y-AXIS**

- Max Cut Ø 298 x L 507 mm
- Bar Capacity 102 mm • BMT65
- 254 mm Chuck • 3,200 rpm • 40hp
- 6,000 rpm Live Tooling w/C axis



ST-28LY **LONG BED** **Y-AXIS**

- Max Cut Ø 298 x L 1,080 mm
- Bar Capacity 102 mm • BMT65
- 254 mm Chuck • 3,200 rpm • 40hp
- 6,000 rpm Live Tooling w/C axis



ST-30Y **BIG BORE** **Y-AXIS**

- Max Cut Ø 348 x L 700 mm
- Bar Capacity 76 mm • BMT65
- A2-6 • 3,400 rpm • 30 hp
- 6,000 rpm Live Tooling w/C axis



ST-30LY **LONG BED** **Y-AXIS**

- Max Cut Ø 324 x L 1,460 mm
- Bar Capacity 76 mm • BMT65
- A2-6 • 3,400 rpm • 30 hp
- 6,000 rpm Live Tooling w/C axis



ST-35Y **BIG BORE** **Y-AXIS**

- Max Cut Ø 348 x L 700 mm
- Bar Capacity 102 mm • BMT65
- 305 mm Chuck • 3,200 rpm • 40hp
- 6,000 rpm Live Tooling w/C axis



ST-35LY **BIG BORE** **LONG BED** **Y-AXIS**

- Max Cut Ø 334 x L 1,460 mm
- Bar Capacity 102 mm • BMT65
- 305 mm Chuck • 3,200 rpm • 40hp
- 6,000 rpm Live Tooling w/C axis



ST-40SY **SHORT BED** **Y-AXIS**

- Max Cut Ø 706 x L 590 mm
- Bar Capacity 102 mm
- A2-8 • 2,400 rpm
- 40 hp (55 hp opt.) • Chuck 381 mm



ST-40Y **Y-AXIS**

- Max Cut Ø 706 x L 1,000 mm
- Bar Capacity 102 mm • BMT75
- 381 mm Chuck • 2,400 rpm • 40hp
- 4,000 rpm Live Tooling w/C axis



ST-45SY **SHORT BED** **BIG BORE** **Y-AXIS**

- Max Cut Ø 706 x L 590 mm
- Bar Capacity 102 mm
- A2-8 • 2,400 rpm
- 40 hp (55 hp opt.) • Chuck 381 mm



ST-45Y **BIG BORE** **Y-AXIS**

- Max Cut Ø 706 x L 1,000 mm
- Bar Capacity 177.8 mm • BMT75
- A2-11 • 1,400 rpm • 40hp
- 4,000 rpm Live Tooling w/C axis

HEAVY TURNING!



BOX WAY LATHES

CNC Box Way Lathes for Heavy Turning

Haas SB Series lathes combine the high dynamic stiffness, load bearing capacity and vibration damping of traditional box way machines with the powerful, easy to use Haas control. A true slant bed design delivers excellent rigidity and thermal stability, while also promoting efficient chip evacuation in a compact footprint.

Each SB Series lathe is equipped with a robust 12 station BMT65 turret that accepts industry standard base mount tooling. Y-axis models also support axial and radial driven tools, allowing secondary milling, drilling and tapping operations to be completed accurately in a single setup.



SB-28 - 2-AXIS

- Max Capacity 345 x 540 mm
- Chuck Size 254 mm
- Spindle Nose A2-8
- Bar Capacity 74 mm
- Max Speed 3,200 rpm



SB-35 - 2-AXIS

- Max Capacity 345 x 760 mm
- Chuck Size 305 mm
- Spindle Nose A2-8
- Bar Capacity 90 mm
- Max Speed 2,500 rpm



SB-35L - 2-AXIS

- Max Capacity 345 x 1260 mm
- Chuck Size 305 mm
- Spindle Nose A2-8
- Bar Capacity 90 mm
- Max Speed 2,500 rpm



SB-28Y - Y-AXIS

- Max Capacity 305 x 470 mm
- Chuck Size 254 mm
- Spindle Nose A2-8
- Bar Capacity 74 mm
- Max Speed 3,200 rpm
- Y-Axis Travel ± 50 mm



SB-35Y - Y-AXIS

- Max Capacity 305 x 700 mm
- Chuck Size 305 mm
- Spindle Nose A2-8
- Bar Capacity 90 mm
- Max Speed 2,500 rpm
- Y-Axis Travel ± 50 mm



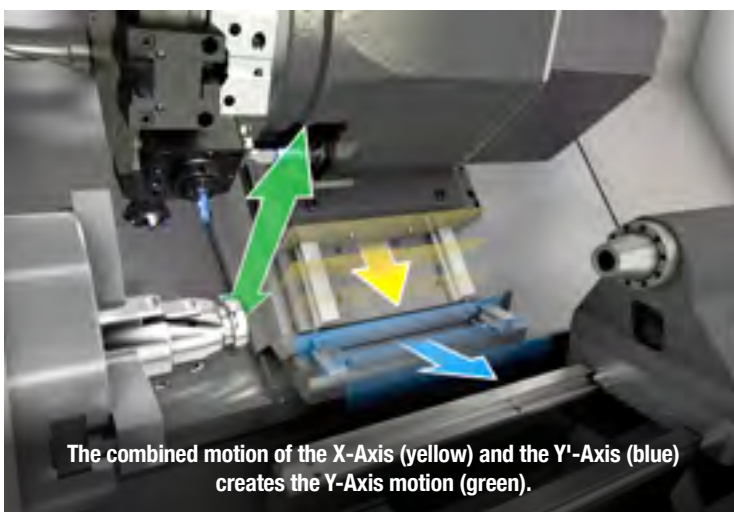
SB-35LY - Y-AXIS

- Max Capacity 305 x 1200 mm
- Chuck Size 305 mm
- Spindle Nose A2-8
- Bar Capacity 90 mm
- Max Speed 2,500 rpm
- Y-Axis Travel ± 50 mm



Y-AXIS MOTION | BMT75 TURRET

Reduce costs and lead times, while boosting productivity



Haas ST Series large-capacity Y-axis turning centres provide $\pm 3"$ (± 76 mm) of Y-axis travel from the centerline for off-centre milling, drilling, and tapping, and come equipped with 4000-rpm live tooling and a synchronized C axis for versatile 4-axis capability.



The Haas 12-station BMT75 turret provides extra-rigid mounting for turning and boring tools to improve cutting performance, and offers additional tool clearance when working with a tailstock. It also accepts axial and radial driven tools for secondary milling, drilling, and tapping operations.



INTEGRATED ROBOT & COBOT SYSTEMS

Plug & Play integration

No complex connections

Haas Robots and Cobots are affordable, user-friendly automation solutions that integrate directly with the Haas control, requiring no third-party systems. They work seamlessly with Haas turning centres, vertical machining centres, and universal machining centres (UMCs) to streamline part handling and boost productivity.

By automating repetitive tasks, Haas Robots and Cobots free up existing staff to focus on higher-value work. Their versatile design accommodates a wide range of part sizes and shapes, reducing manual labour and downtime, making them a cost-effective solution for improving efficiency and embracing automation.



HC30 6-AXIS COBOT

- 30 kg capacity • 1,800 mm reach
- Plug-and-play capabilities to:
- VF-3 through VF-5
- UMC-750/SS and UMC-1000/SS
- ST-30, ST-35, DS-30Y, inc. Y-axis
- ST-30L and ST-35L lathes (inc. Y-axis and longbed)



HC5 6-AXIS COBOT

- 5 kg capacity • 800 mm reach
- Plug-and-play capabilities to:
- VF-1 through VF-2/YT/SSYT
- UMC-400 through UMC-750/SS
- DT-1/2 & DM-1/2 • MM & SMM
- ST-10 through ST-28 lathes (inc. Y-axis and longbed)



HC10 6-AXIS COBOT

- 10 kg capacity • 1,000 mm reach
- Plug-and-play capabilities to:
- VF-1 through VF-2/YT/SSYT
- UMC-400 through UMC-750/SS
- DT-1/2 & DM-1/2 • MM & SMM
- ST-10 through ST-28 lathes (inc. Y-axis and longbed)



HC15 6-AXIS COBOT

- 15 kg capacity • 1,300 mm reach
- Plug-and-play capabilities to:
- VF-1 through VF-5
- UMC-400 through UMC-1000/SS
- DT-1/2 & DM-1/2 • MM & SMM
- ST-10 through ST-28 lathes (inc. Y-axis and longbed)



HRP1 6-AXIS ROBOT

- 7 kg capacity • 911 mm reach
- Plug-and-play capabilities to:
- VF-1 through VF-2/YT/SSYT
- UMC-400 through UMC-1000/SS
- DT-1/2 & DM-1/2 • MM & SMM
- ST-10 through ST-28 lathes (inc. Y-axis and longbed)



HRP2 6-AXIS ROBOT

- 25 kg capacity • 1,831 mm reach
- Plug-and-play capabilities to:
- VF-2YT through VF-5/50XT
- UMC-400 through UMC-1000/SS
- DT-1/2 & DM-1/2 • MM & SMM
- ST-20 through ST-35 lathes (inc. Y-axis and longbed)



HRP3 6-AXIS ROBOT

- 50 kg capacity • 2,050 mm reach
- Plug-and-play capabilities to:
- VF-5/40 through VF-12/50
- UMC-400 through UMC-1000/SS
- DT-1/2 & DM-1/2
- ST-20 through ST-35 lathes (inc. Y-axis and longbed)

PALLET POOL SYSTEMS

High-volume production
Unattended operation

The Haas Pallet Pool System is the simplest automation platform, expanding your mill table setup across multiple pallets.

Allocate pallets to various jobs and prioritise each using the onboard, user-friendly Haas scheduler. This system enables flexible job management, allowing you to skip, pause, or fit in rush jobs, and features a dedicated load/unload station maximising spindle uptime and overall productivity.

Ideal for larger and heavier parts, the pallet pool simplifies clamping and unclamping, handling parts too large for typical loaders like APLs or robots. This ensures efficient automation for a broader range of parts, leveraging the full 24 hours each day.



3- & 6-STATION PALLET POOL VF-2YT SERIES/VM-2

- 3+1 pallet and 6+1 pallet versions
- Pallet size: 914 x 457 mm
- 340 kg max payload per pallet

5-STATION PALLET POOL VF-4 & VF-4SS

- 5+1 pallets
- Pallet size: 1,321 x 517 mm
- 453.6 kg max payload per pallet

6-STATION PALLET POOL EC-400

- 6+1 pallets
- Pallet size: 400 x 400 mm
- 227 kg max payload per pallet





6-STATION PALLET POOL UMC-1250/SS

- 6+1 pallets
- Includes 360 litre coolant tank
- 227 kg max payload per pallet
- 762 x 610 mm work envelope

20-STATION PALLET POOL UMC-500/SS

- 20+1 pallets
- Includes 360 litre coolant tank
- 91 kg max payload per pallet
- 203 x 419 mm tall work envelope

10-STATION PALLET POOL UMC-500/SS/750/SS/1000/SS

- 10+1 pallets
- Includes 360 litre coolant tank
- 91 kg max payload per pallet
- UMC-500: 406 x 406 mm work envelope
- UMC-750/UMC-1000: 406 x 533 mm work envelope



ROBOT PALLET LOADER

Scaleable and affordable

The Haas Robot Pallet Loader System offers total flexibility and easy customisation for Haas UMCs and small to medium VMCs. Its all-inclusive, plug-and-play design lets you start simple and expand as needed, customising the pallet rack layout to fit your projects. You can adjust the system effortlessly to match your changing requirements, ensuring optimal performance for every job. Its seamless integration with Haas machines ensures smooth operation and minimal setup time, making it an excellent investment for shops of all sizes.

The RPL's advanced features make it easy to automate repetitive tasks, maximising machine uptime and freeing up existing staff to focus on higher-value tasks. With its user-friendly design and customisable capabilities, the Haas RPL is the perfect tool to future-proof your business and stay competitive in an ever-evolving industry.



ROBOT PALLET LOADER

- Plug-and-play capabilities to Haas UMCs and VMCs
- Set up and operation uses Haas control and remote jog handle
- Includes interface for optional area scanners and safety systems
- Includes load station, pallet rack, and 3 zero point pallets
- Additional pallets available, expandable to 15 pallets
- For UMC-500 to UMC-1000 and VF1 to VF-5

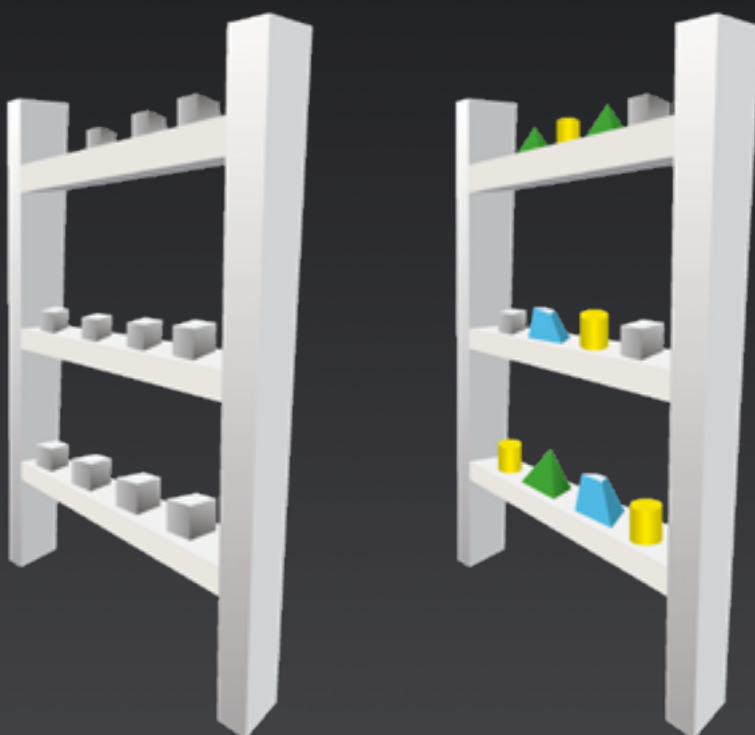


TOTAL FLEXIBILITY

High volume or high mix

The Haas Robot Pallet Loader System offers total flexibility and easy customisation for Haas UMCs and small to medium VMCs. Its all-inclusive, plug-and-play design lets you start simple and expand as needed, customising the pallet rack layout to fit your projects. You can adjust the system effortlessly to match your changing requirements, ensuring optimal performance for every job.

HIGH VOLUME **OR** **HIGH MIX**



EASY CUSTOMISATION

Customise the layout of the pallet station grid to optimise your project. If your needs change, so can the pallet station.



ASSIGN PART MASS

The only set up needed from part to part is entering the raw/finished part mass per pallet.



PALLET SCHEDULER

The Pallet Schedule Table allows you to prioritise pallet frequency and priority for loading and unloading the pallets.



TOUCHSCREEN GRID VIEW

The grid view is fully touch capable, making it easier to select a pallet that corresponds to what the user sees on the shelf.

AUTOMATIC BAR FEEDER

Purpose built for Haas lathes

The Haas Bar Feeder is a simple and affordable way to automate part production on Haas ST and DS series turning centres to boost productivity. It is designed and built exclusively for use on Haas turning centres and connects directly to the Haas control.

Our rollaway design lets you swap out the patented Haas extruded spindle liners in minutes, and our quick-change pushrods snap in place without tools. Bar height adjustments are fast and easy using a single handwheel, and our belt-driven bar-shuttle system provides lightning-fast retract speeds to reduce cycle times.

All-inclusive design, with plug-and-play capabilities

Interfaces directly with the Haas control

Includes patented Haas spindle liners



haas.co.uk

AUTOMATIC PARTS LOADER SYSTEMS

Lights-out automation. Uninterrupted production

The Haas Automatic Parts Loader (APL) is an affordable, easy-to-use automation solution for Haas CNC machines. It integrates seamlessly with turning centres, VMCs and UMCs, with a compact version for Mini Mills, simplifying part loading and unloading to boost productivity.

With its programmable arm and versatile design, the APL handles a wide range of part sizes and shapes. It reduces manual labour and downtime, making it a cost-effective option for manufacturers aiming to improve production efficiency.



HAAS APL FOR MILLS

- Plug-&-play capabilities VF-1, VF-2 series, DT & DM
- Interfaces directly with the Haas control
- Parts up to 146 x 146 x 102mm
- Max weight 4.5 kg

COMPACT APL MINI MILL

- Parts up to 51 x 51 x 51 mm
- Max weight 1.4 kg

HAAS APL FOR UMC-500/SS

- Plug-&-play capabilities to UMC-500 and UMC-500SS
- Interfaces directly with the Haas control
- Parts up to 152 x 152 x 102 mm
- Max weight 4.5 kg

HAAS APL FOR LATHES

- Plug-&-play capabilities ST-10Y, 15Y, 20/Y, 25/Y, 28/Y lathes
- Interfaces directly with the Haas control
- Slug parts up to 147 x 127 mm (dia x height)
- ST-10 to ST-15: Bar parts up to 102 x 406 mm (dia x length)
- ST-20 to ST-28: Bar parts up to 102 x 533 mm (dia x length)

N.B. Includes CE/UKCA compliant safety guard fencing

MILL AUTOMATION



MILL PALLET POOLS



VMC



3+1 Pallet Pool

VF-2YT VM-2
VF-2SSYT

UMC



10+1 Pallet Pool

UMC-500 UMC-500SS
UMC-750 UMC-750SS
UMC-1000 UMC-1000SS



6+1 Pallet Pool

VF-2YT VM-2
VF-2SSYT



20+1 Pallet Pool

UMC-500
UMC-500SS



6+1 Pallet Pool

EC-400



6+1 Pallet Pool

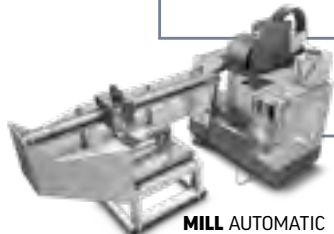
UMC-1250
UMC-1250SS

MILL AUTOMATIC PARTS LOADERS



MILL AUTOMATIC PARTS LOADER

VF-1 VM-2
VF-2 VF-2YT
VF-2SS VF-2SSYT



UMC AUTOMATIC PARTS LOADER

UMC-400
UMC-400SS
UMC-500
UMC-500SS



COMPACT AUTOMATIC PARTS LOADER

Mini Mill Super Mini Mill
DTs DMs
VF-2 VF-2SS
VF-2YT VF-2SSYT

MILL ROBOTS



COBOT 5kg

MM SMM
DT/DM Models
VF-1 to VF-2
UMC-400 to 750



COBOT 10kg

MM SMM
DT/DM Models
VF-1 to VF-2
UMC-400 to 750



COBOT 15kg

MM SMM
DT/DM Models
VF-1 to VF-5
UMC-400 to 1000

7kg CAPACITY ROBOT SYSTEM

MM SMM
DT/DM Models
VF-1 to VF-2
UMC-400 to 750



COBOT 30kg

VF-3 to VF-5
UMC-400 to UMC-1000SS



25kg CAPACITY ROBOT SYSTEM

VF-1 to VF-5
UMC-400 to UMC-1000SS



50kg CAPACITY ROBOT SYSTEM

VF-6 to VF-11
UMC-400 to UMC-1000SS



ROBOTIC PALLET LOADER

All UMCs
VF-1 to VF-5
VM-2, VM-3



Easy Mill Automation

STEP-AND-REPEAT PROCESS
UTILIZE THE SAME PROGRAMS
HIGH-VOLUME/LOW-MIX & LOW-VOLUME/HIGH-MIX
PRELOAD ALL PARTS



Affordable Mill Automation

LOW INVESTMENT
RUNS MULTIPLES OF THE SAME PART
SIMPLE LOAD/UNLOAD PART PROCESSING
AUTOMATED CLAMP/UNCLAMP FIXTURING



Versatile Mill Automation

CAN PICK-UP/DROP-OFF AT DIFFERENT LOCATIONS
INCORPORATE PART-FLIPPING STATION
RUNS MULTIPLES OF THE SAME PART
AUTOMATED CLAMP/UNCLAMP FIXTURING



LATHE AUTOMATION

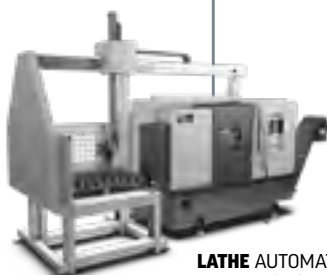
LATHE AUTOMATIC PARTS LOADERS

HAAS BAR FEEDER



HAAS BAR FEEDER

ST-10 to ST-35



LATHE AUTOMATIC PARTS LOADER

ST10Y ST-15Y ST-20Y ST-25Y ST-28Y

LATHE ROBOTS



COBOT 30kg
ST-30 to ST-35
DS-30Y



COBOT 5kg
ST-10 to ST-28



COBOT 10kg
ST-10 to ST-28



COBOT 15kg
ST-10 to ST-28



7kg CAPACITY ROBOT SYSTEM
ST-10 to ST-28



25kg CAPACITY ROBOT SYSTEM
ST-20 to ST-35
DS-30Y



50kg CAPACITY ROBOT SYSTEM
ST-30 to ST-35

AUTOMATION STARTS WITH ASKING THE RIGHT QUESTIONS.

WHAT?

Free up existing talent to work on more meaningful tasks, and allow a machine to deal with the repetitive loading and unloading of parts. Automation is the best, most logical progression for growing your business.

WHY?

Because your competition is already doing it. Automation is essential to control your costs, maximise your efficiency, and maintain a competitive edge – to ensure your future. Automation has become an absolute necessity.

HOW?

There is no one size fits all solution. We offer a number of automation systems designed to fit your specific needs. Choose from a wide selection of pre-engineered solutions, with an emphasis on **Ease, Affordability, and Versatility.**



Easy Lathe Automation

EASY FIRST-OP AUTOMATION RUNS MULTIPLES OF THE SAME PART
INTERFACES DIRECTLY WITH THE HAAS CONTROL
AUTO-FEED MATERIAL UP TO 3" (76 MM) DIA.



Affordable Lathe Automation

LOW INVESTMENT
SIMPLE LOAD/UNLOAD PART PROCESSING
RUNS MULTIPLES OF THE SAME PART
SET UP AND PROGRAM THROUGH HAAS CONTROL



Versatile Lathe Automation

MOST VERSATILE AUTOMATION CHOICE
CAN PICK-UP/DROP-OFF AT DIFFERENT LOCATIONS
INCORPORATE PART FLIPPING STATION
SET UP AND PROGRAM THROUGH HAAS CONTROL



HAAS ENGINEERING

At Haas, our goal is to keep machinists machining

We offer a complete range of cost-effective support, including commissioning, training, technical support, service agreements, and applications advice. We measure every aspect of our support systems so we can maintain our service to industry-leading standards.

Whether it's installing new equipment, training your machining staff, solving a technical problem, or helping to maintain the health and performance of your investment, you can count on our experienced team.

EXPERT ADVICE

Friendly, expert advice
whenever you need it

Our dedicated engineering support team is on hand to give you answers to the widest range of technical queries, including applications, maintenance, programming and the latest products.

Call us on 01603 760539



COME AND SEE US BOOK A DEMONSTRATION



See a selection of Haas CNC machines in action at one of our Haas Technical Centres.

Call 01603 760539 to book your appointment.



THE INDUSTRY'S BEST SERVICE AND SUPPORT

- ✓ 32 full-time Haas engineers strategically placed across the UK
- ✓ Less than 1.5 hours travel time to 98% of our customers
- ✓ Each is USA-factory-certified and tested monthly
- ✓ Every engineer has a fully-stocked 4x4 service vehicle
- ✓ £4,600,000 of parts in our UK warehouses
- ✓ Over 11,000 UK machine installations, with 280,000 globally
- ✓ Winners of multiple industry awards



01603 760539

sales@haas.co.uk

www.haas.co.uk





THE COMPACT UMC-400 **5-AXIS PRECISION** MAXIMUM EFFICIENCY



haas.co.uk