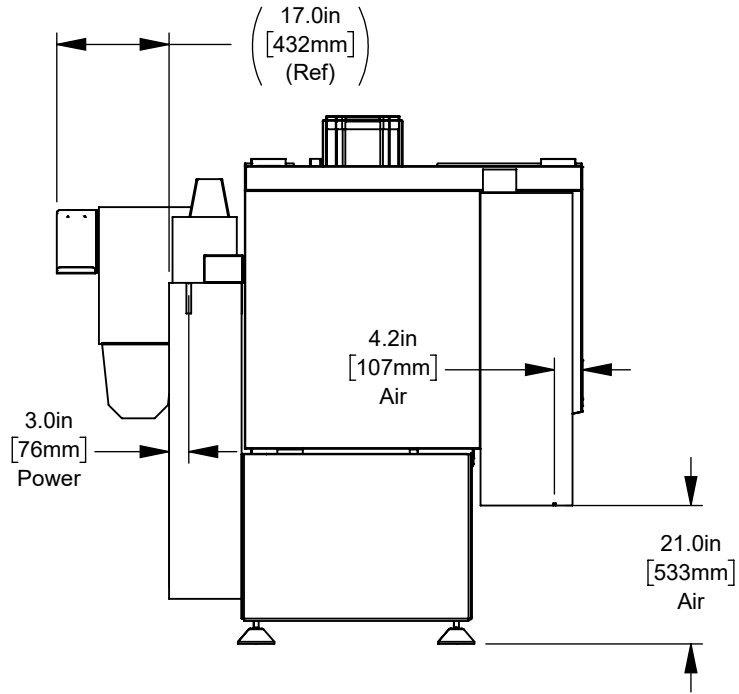
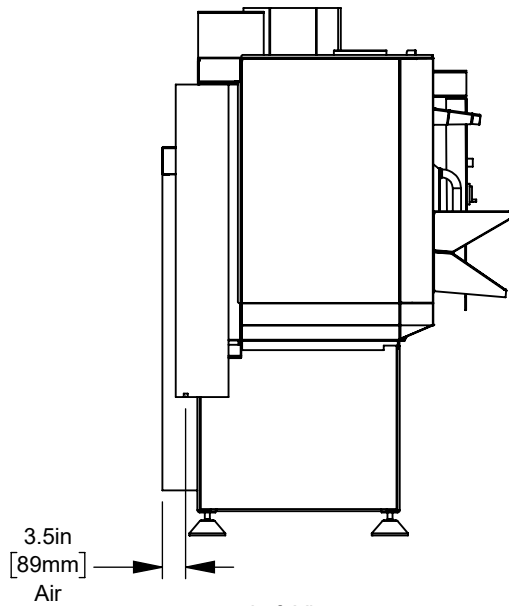


All dimensions based on stackup of sheetmetal, subject to variation of 1/2" ( 13 mm)

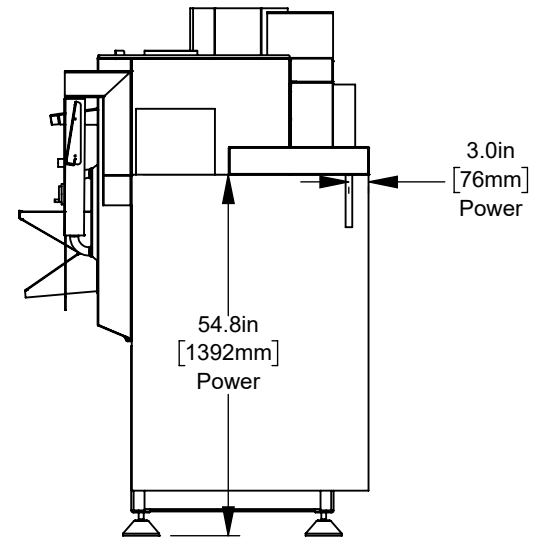
Air & Power



Rear View



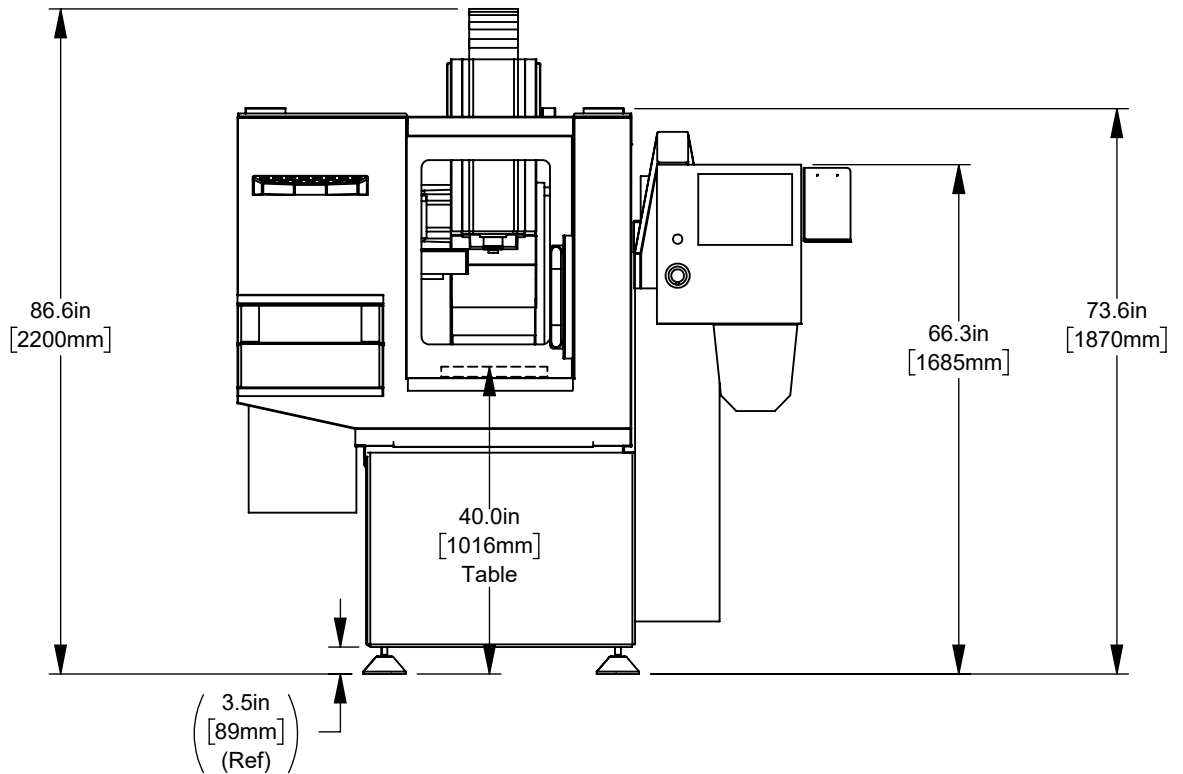
Left View



Right View

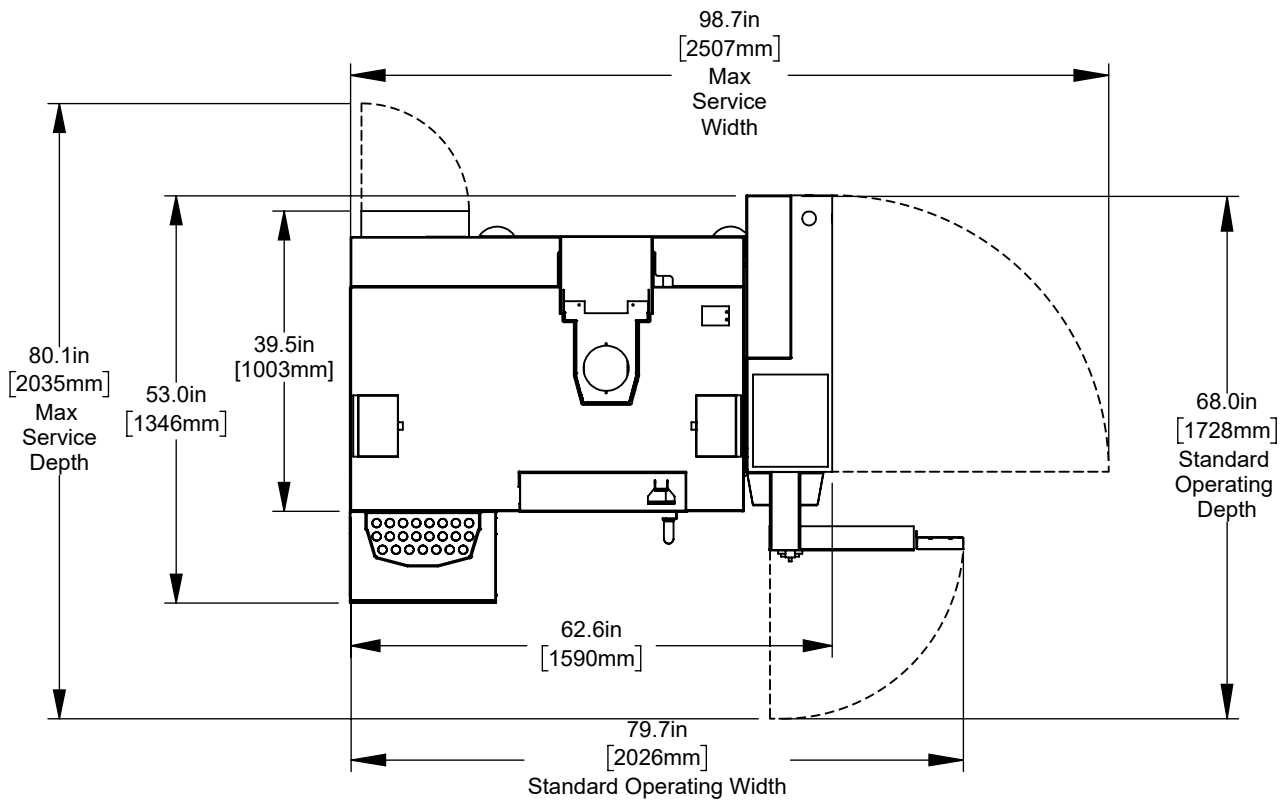
All dimensions based on stackup of sheetmetal, subject to variation of 1/2" ( 13 mm)

Height Breakdown



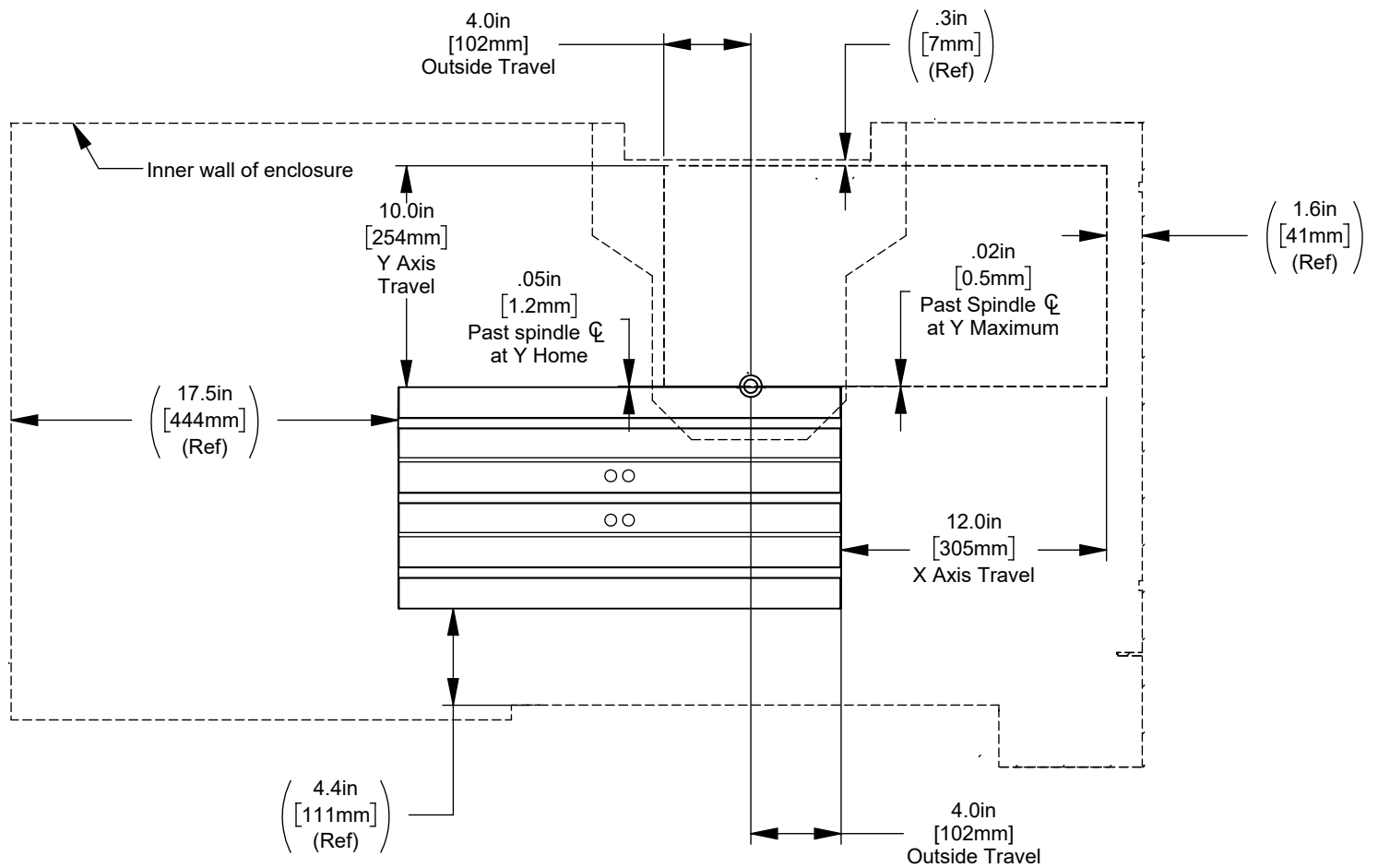
All dimensions based on stackup of sheetmetal, subject to variation of 1/2" ( 13 mm)

Width Breakdown

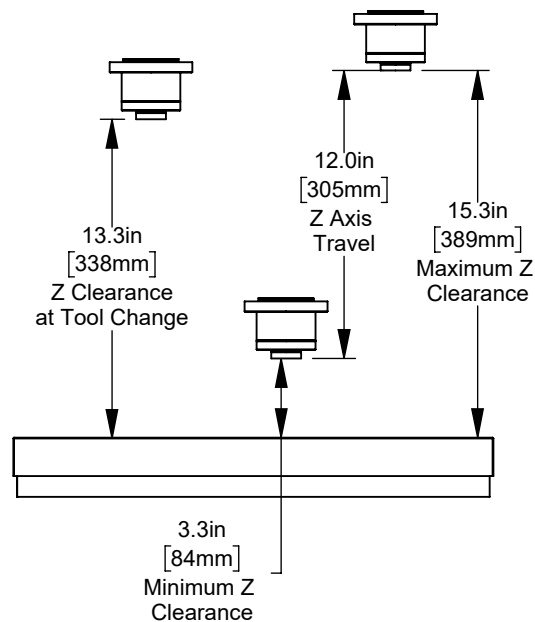


All dimensions based on stackup of sheetmetal, subject to variation of 1/2" ( 13 mm)

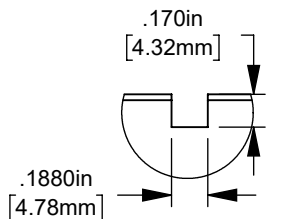
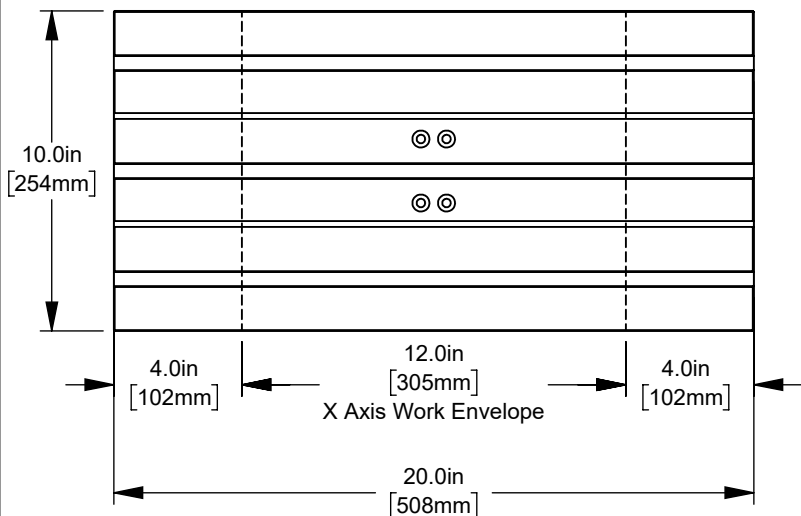
X&Y-Axis Clearance



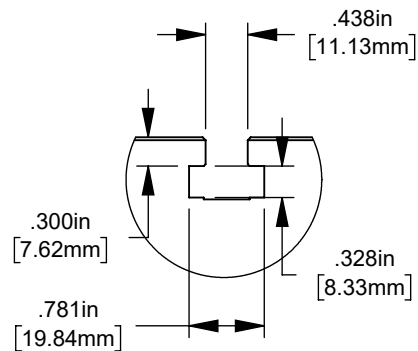
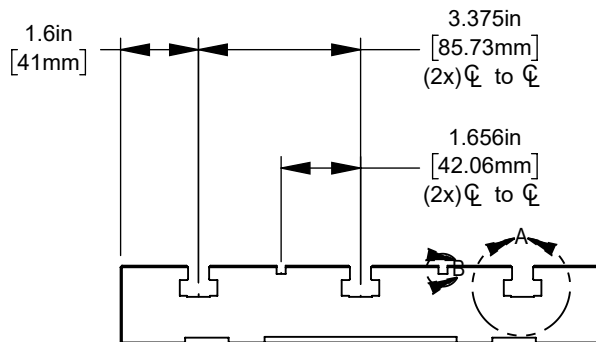
Z-Axis Clearance



Table

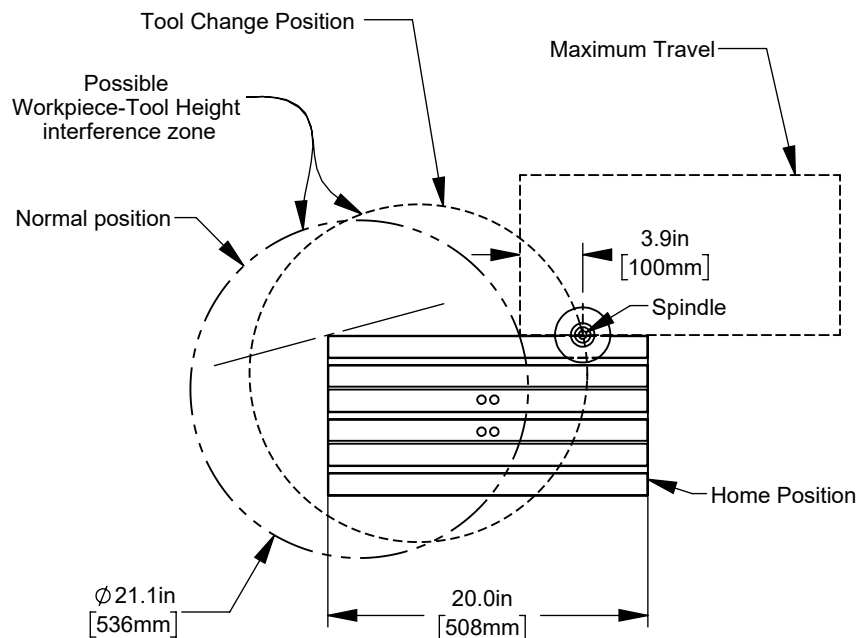


Small Slot Detail



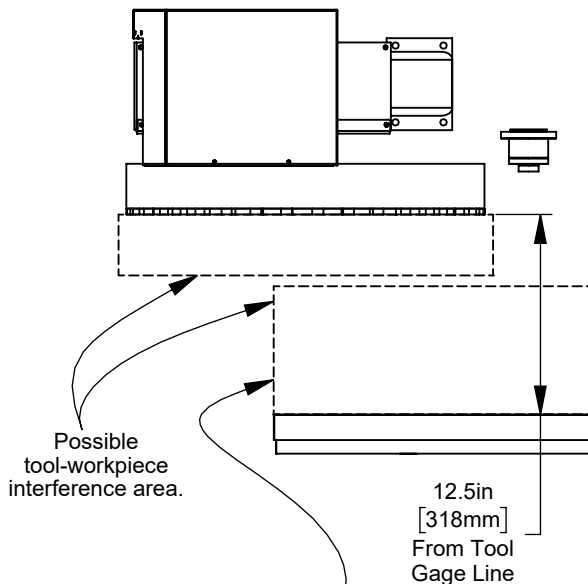
T-Slot Detail

Tool Changer



Note - Tool interference diagram represents a theoretical 0.000 $\varnothing$  tool interference. Add the tool radius to the diagram for your specific layout or application

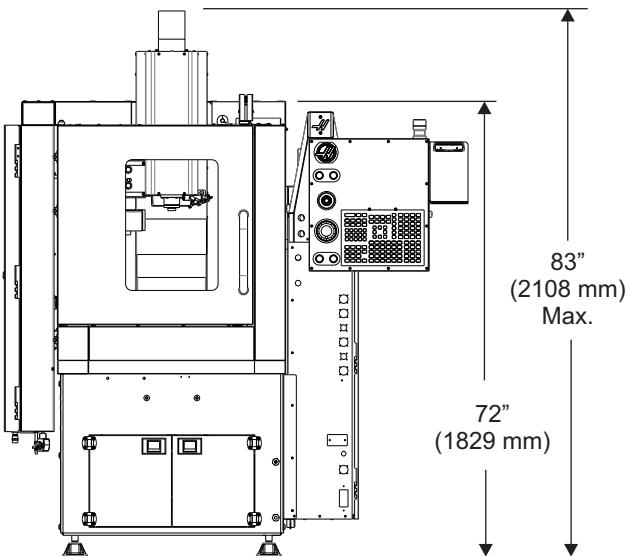
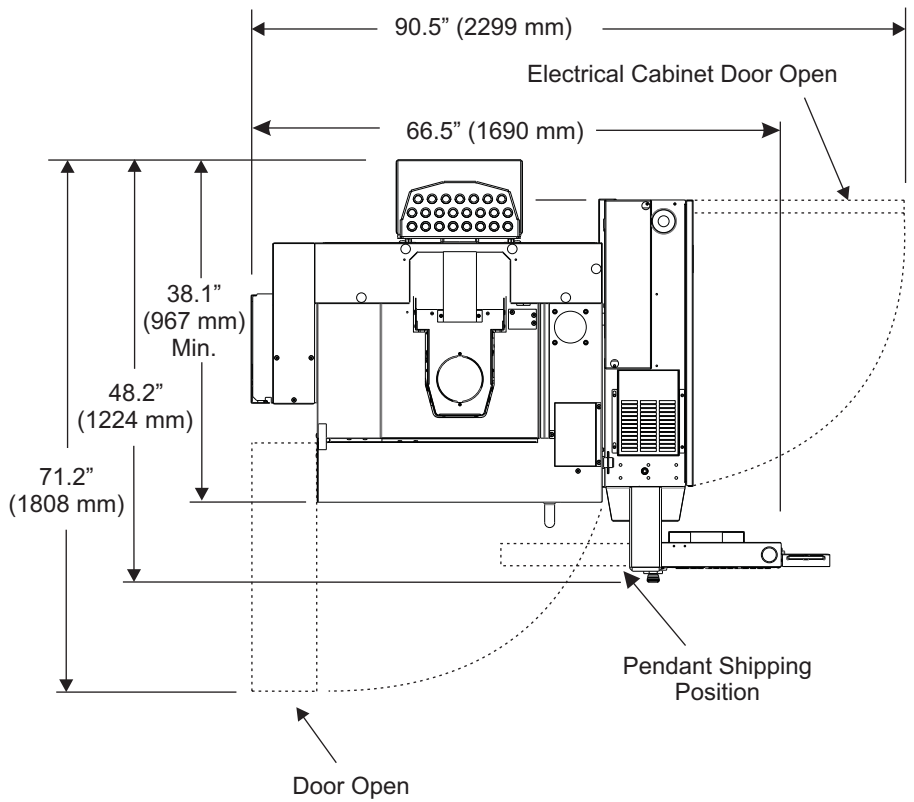
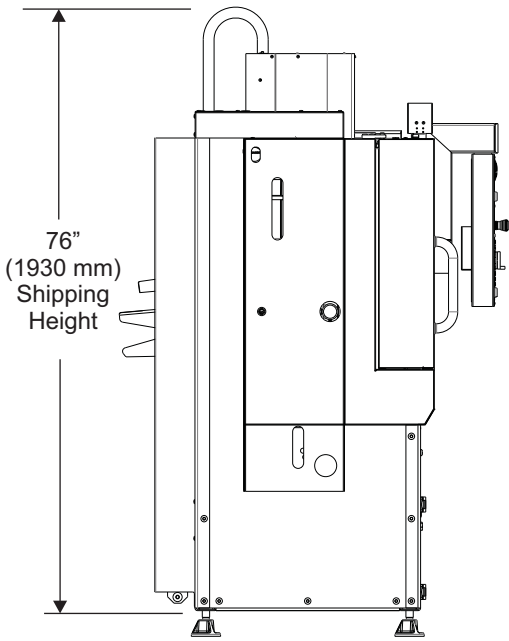
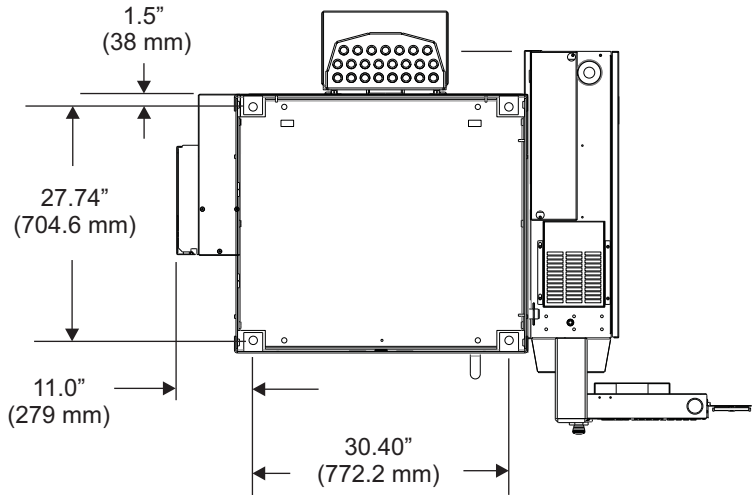
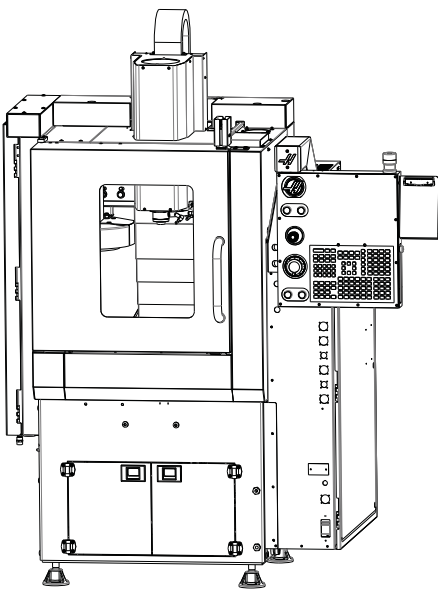
Note - If using the TRT70 or other tall workholding, pay close attention to the 12.5in [318mm] Tool + Work + Clearance maximum



Maximum table projection height without interference = (12.5in [318mm]) - (Longest tool gage length) + Clearance

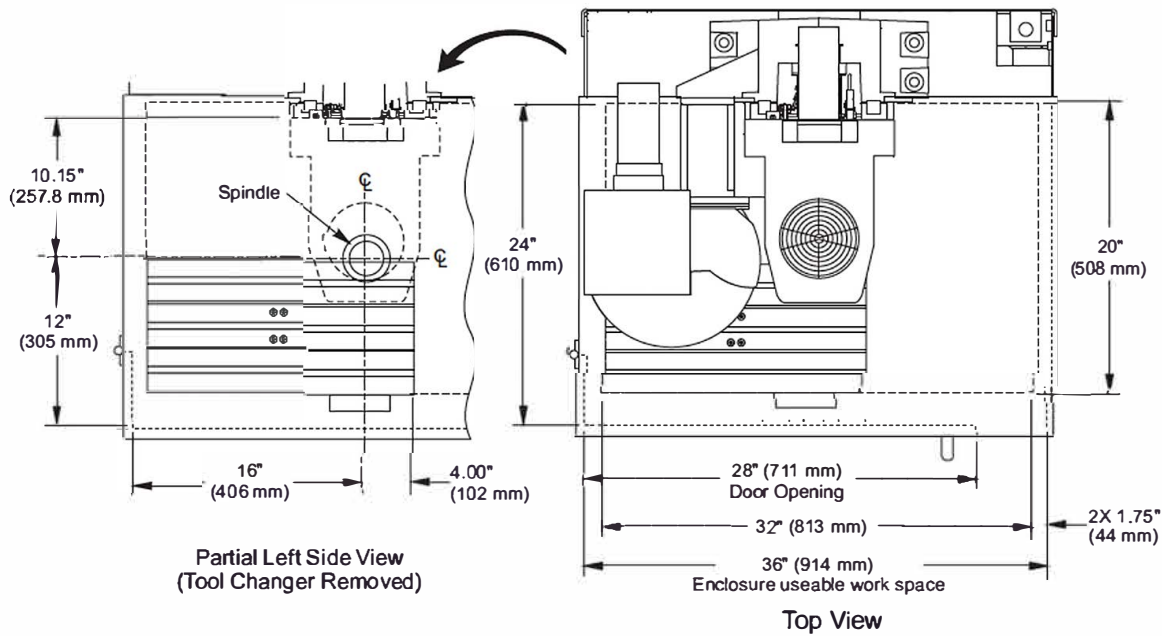
# CM-1 (2016-2019)

Leveling Pad Locations  
(base shown for clarity)

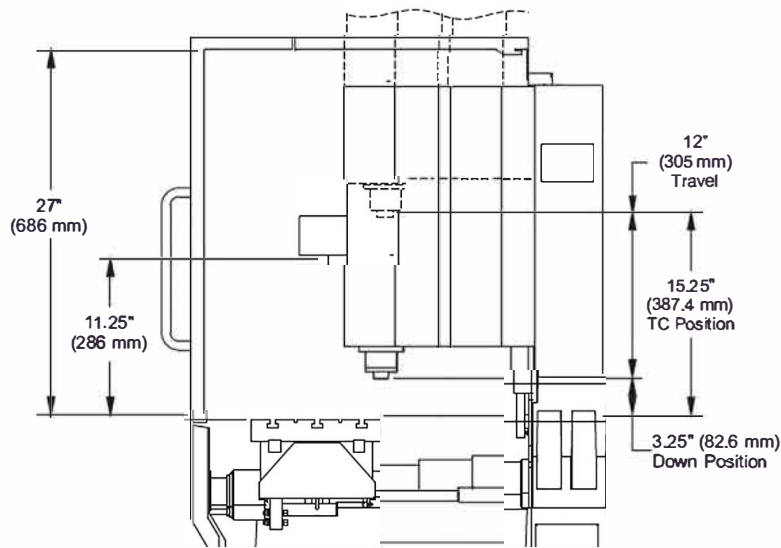


\*Due to continual product improvements, machine dimensions are subject to change without notice.

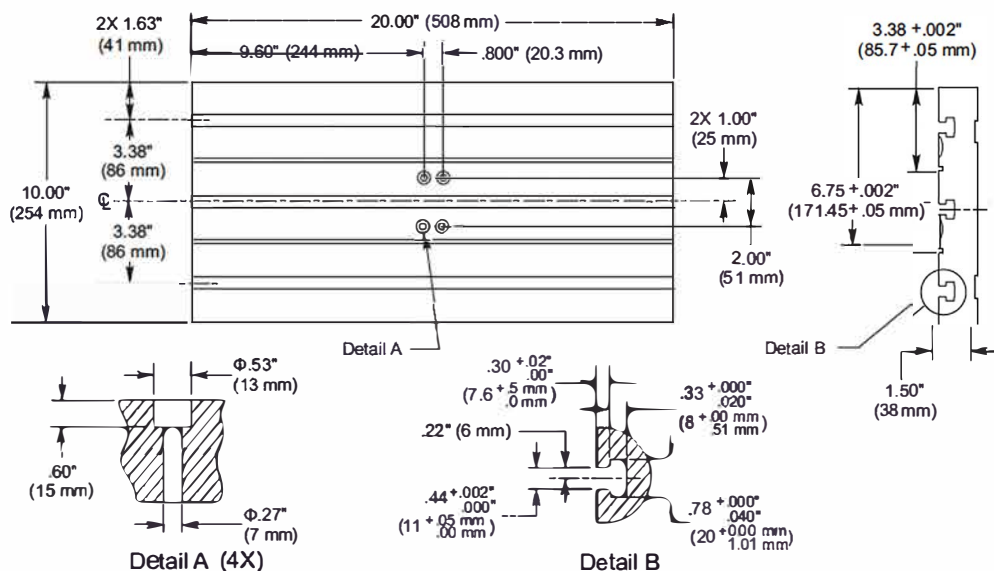
# CM-1 (2016-2019)



## Enclosure Work Space



## Table Dimensions



\*Due to continual product improvements, machine dimensions are subject to change without notice.