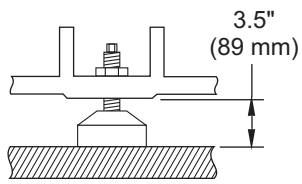
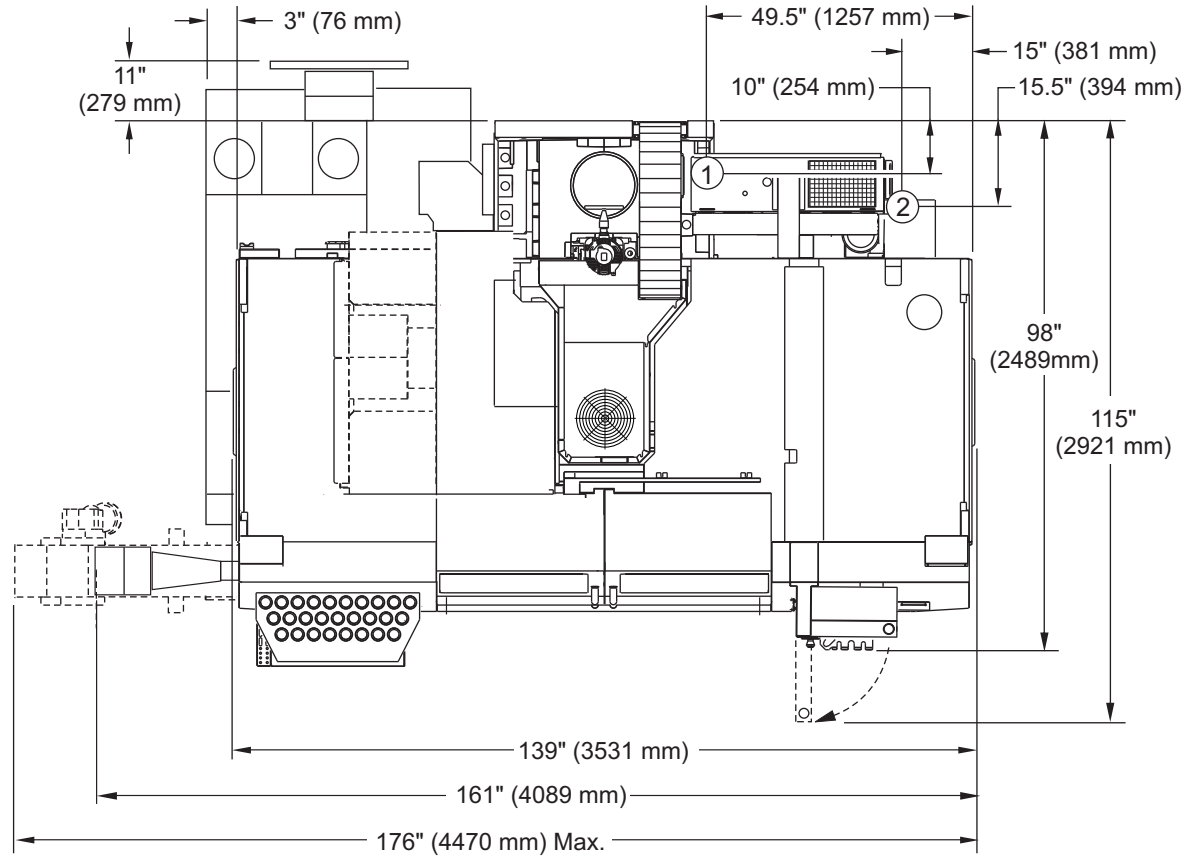


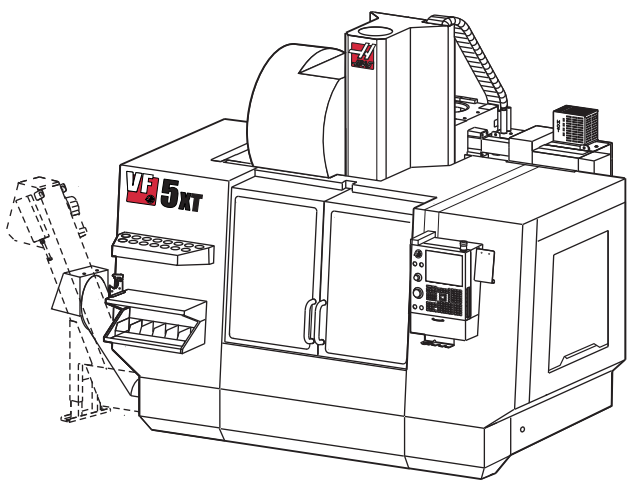
VF-5 Anchor Pattern



Leveling Pad Pin Dimension

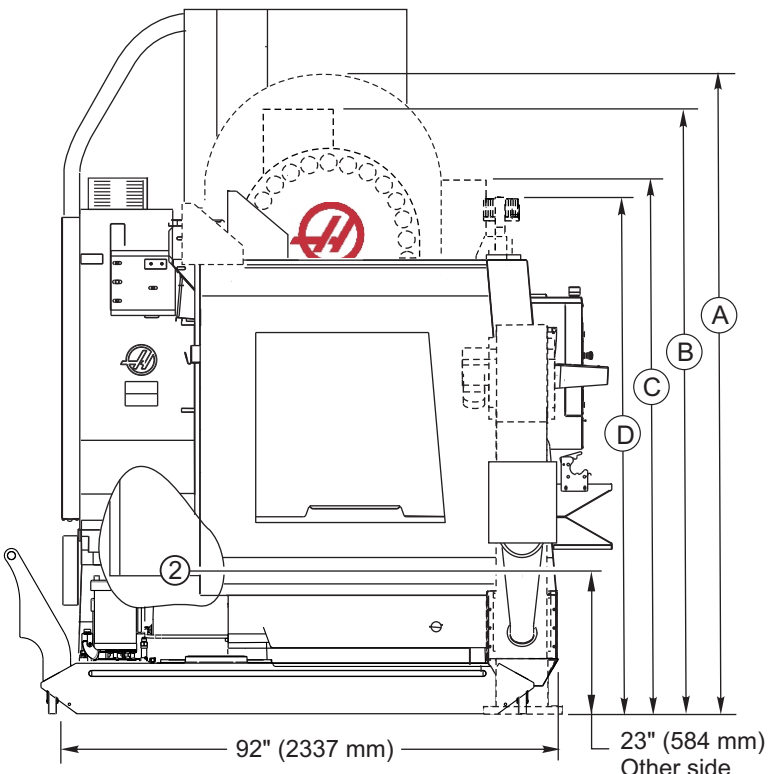
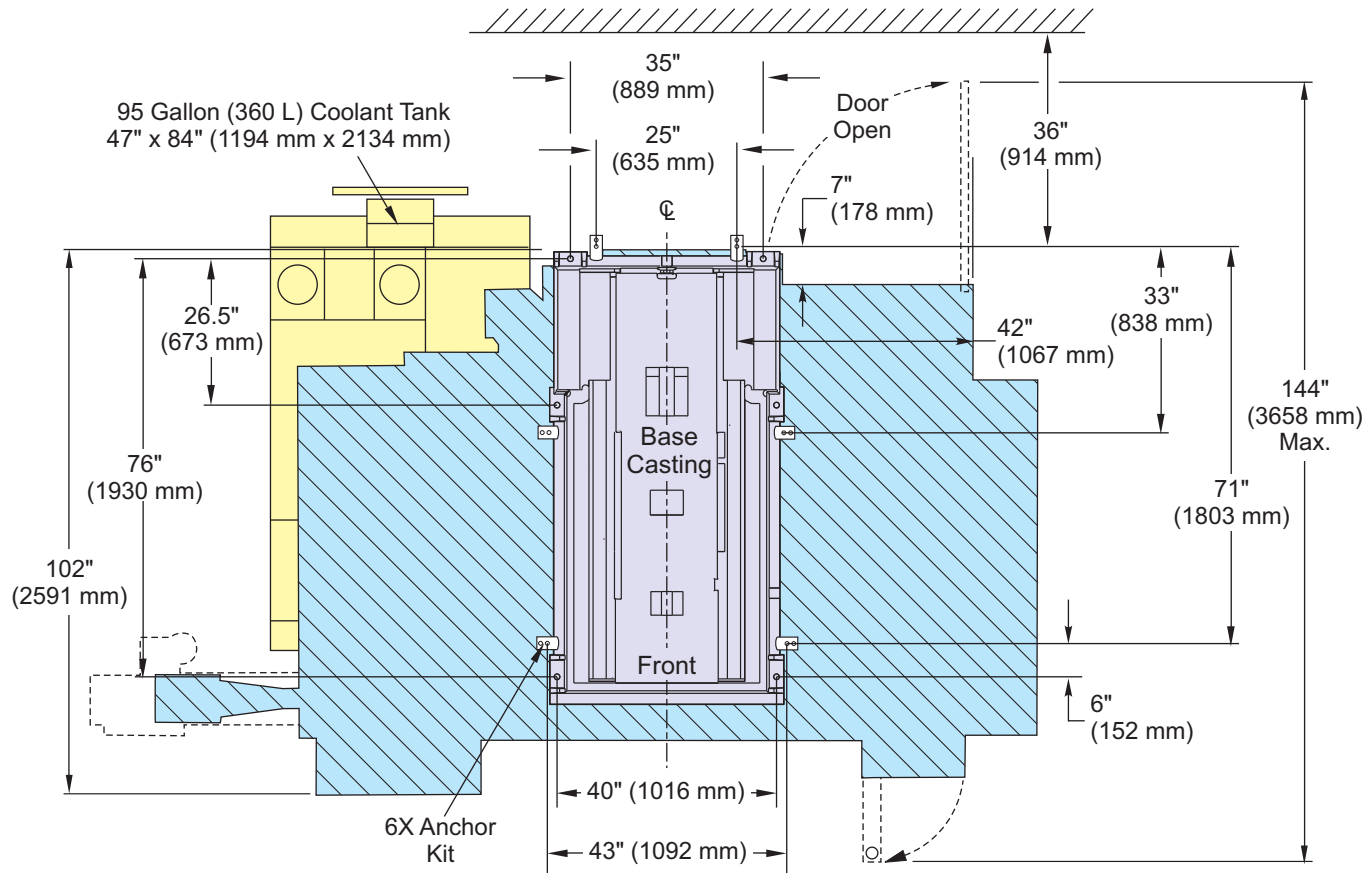


- ① Electrical Connection
- ② Air Connection

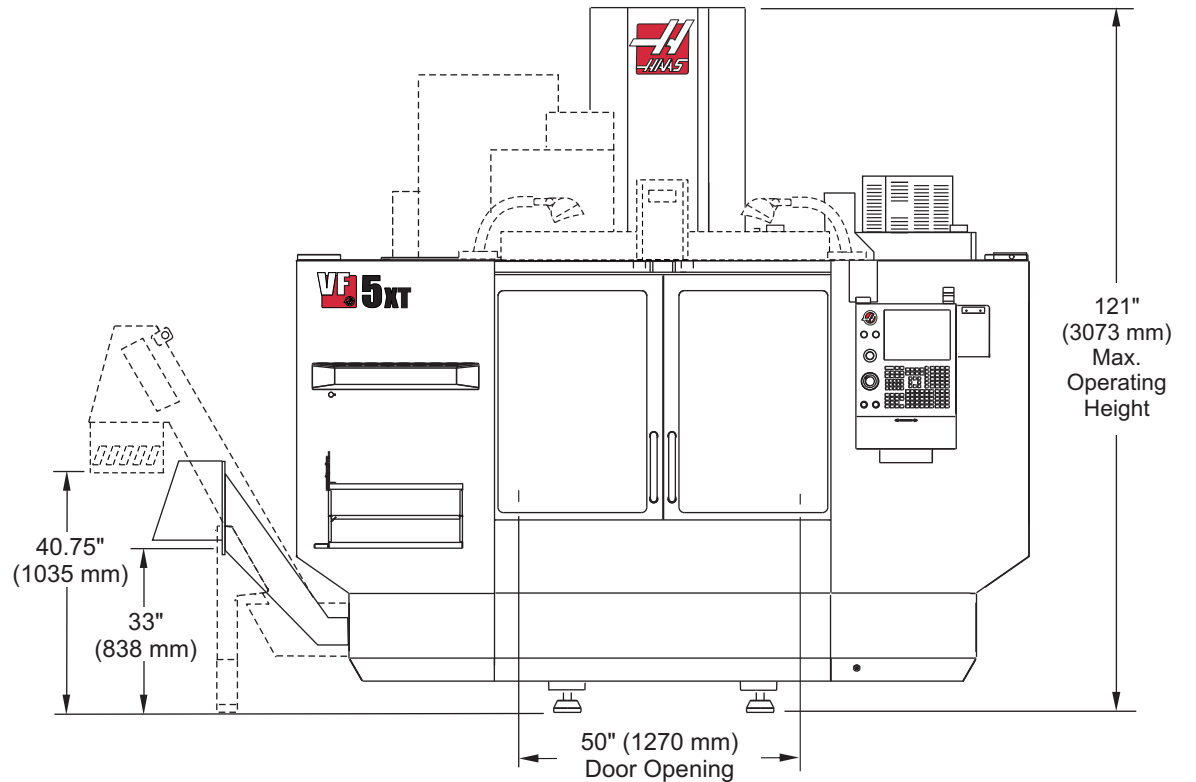


- Standard: 20 Station Carousel Tool Changer
- Option: 24+1 Side Mount Tool Changer
- Option: 40+1 Side Mount Tool Changer

Reference ES0039  
Machine Clearance Heights



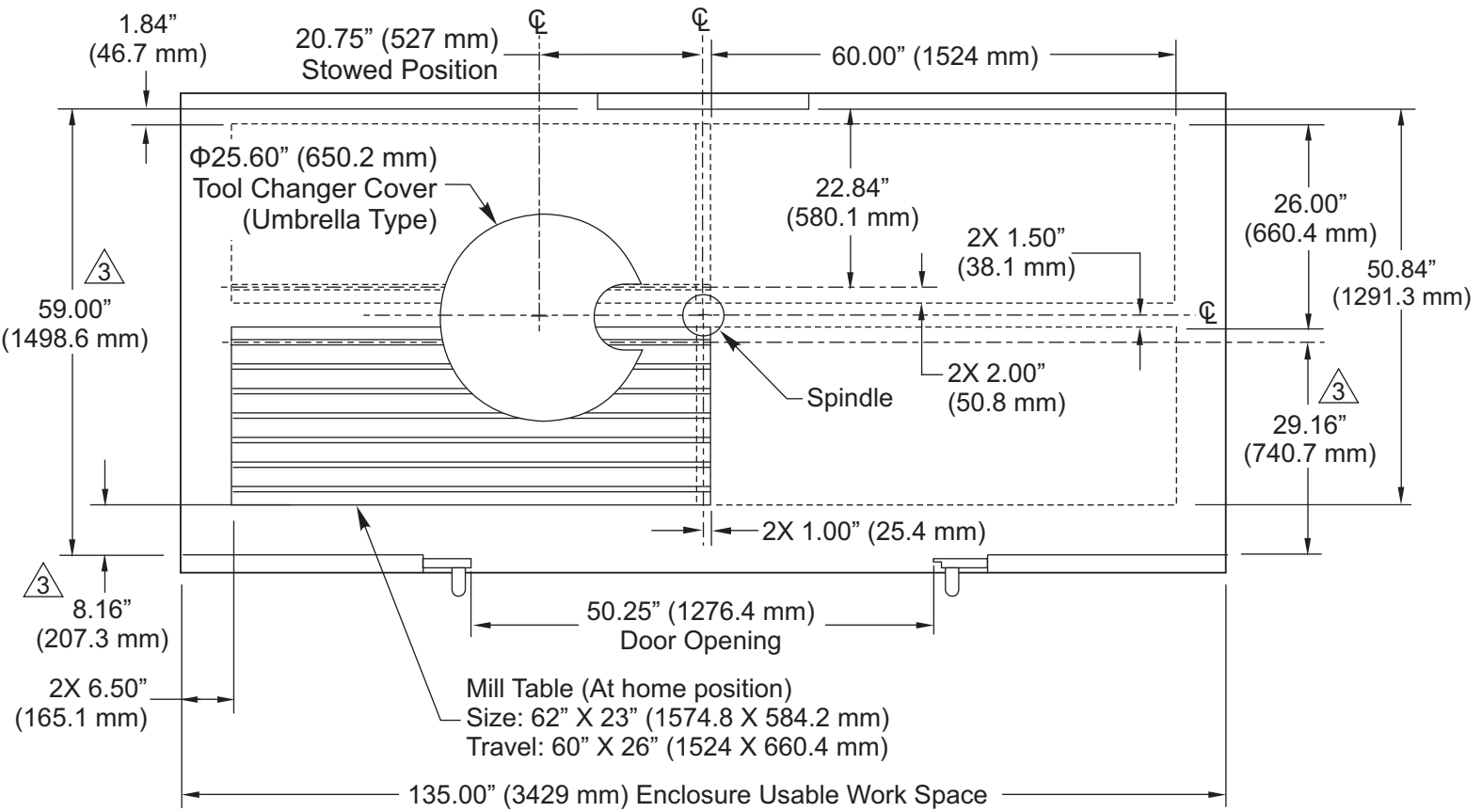
- A 115" (2921 mm) SMTC 40 Optional
- B 107" (2718 mm) SMTC 24 Optional
- C 95" (2413 mm) Auto Door Optional
- D 92" (2337 mm) High Intensity Lights Optional



Option: Multi-Auger Chip Conveyor

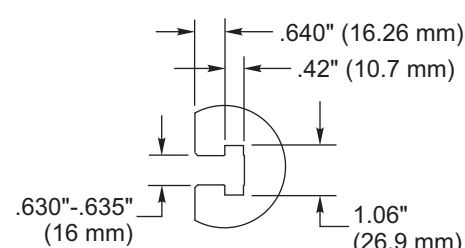
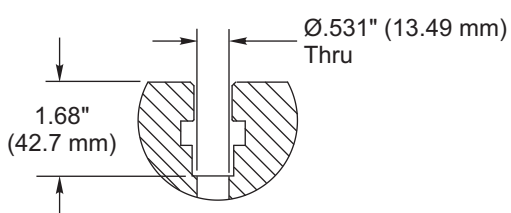
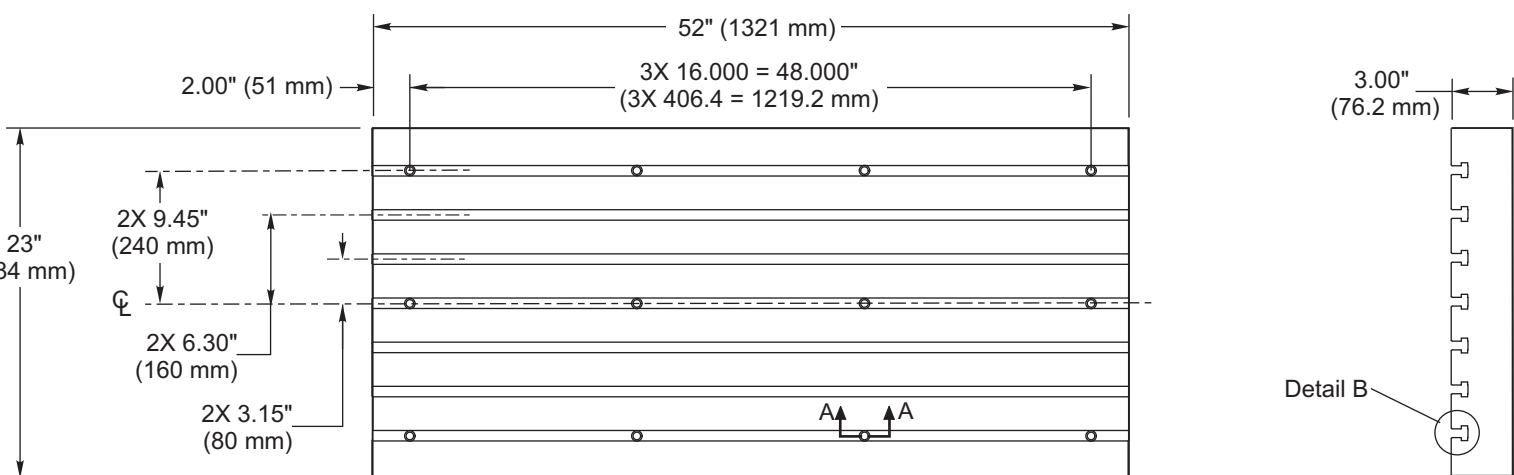
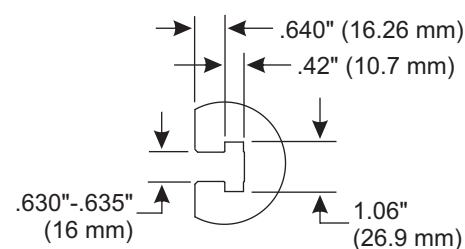
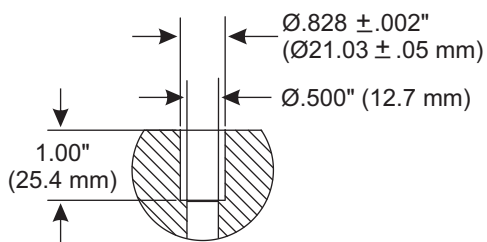
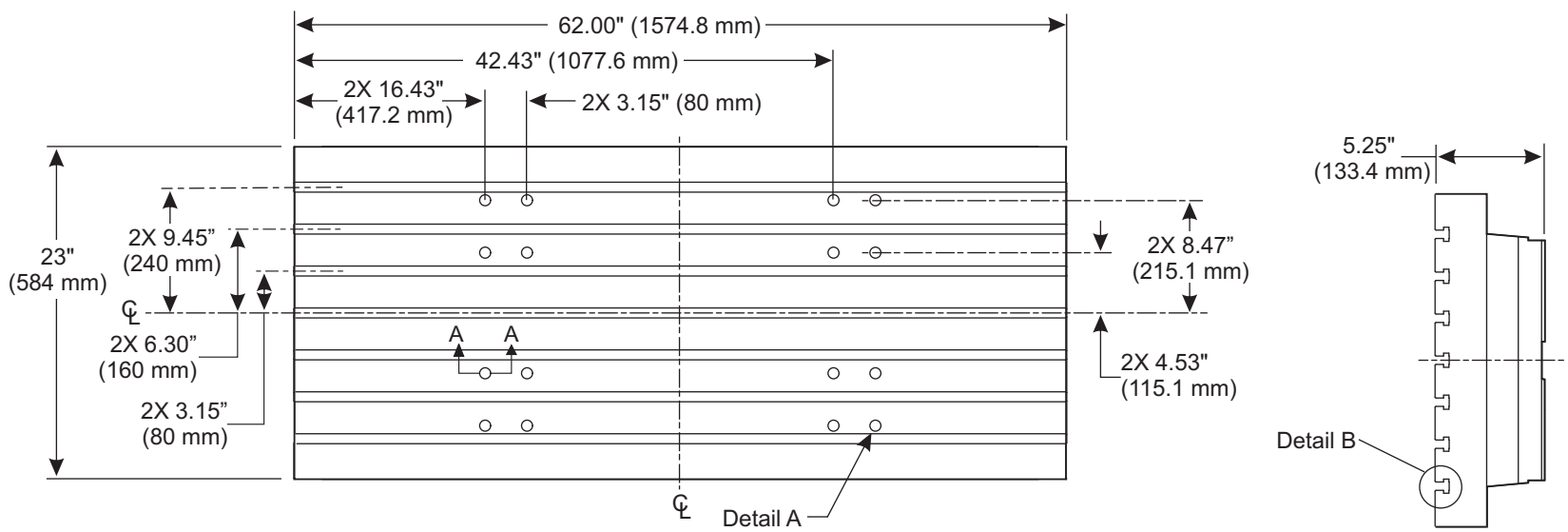
Minimum distance required to remove conveyor from mill 85" (2159 mm).

Minimum distance required to remove conveyor from mill 50" (1270 mm) when conveyor is folded at 90 degrees and folded down as it is pulled out.



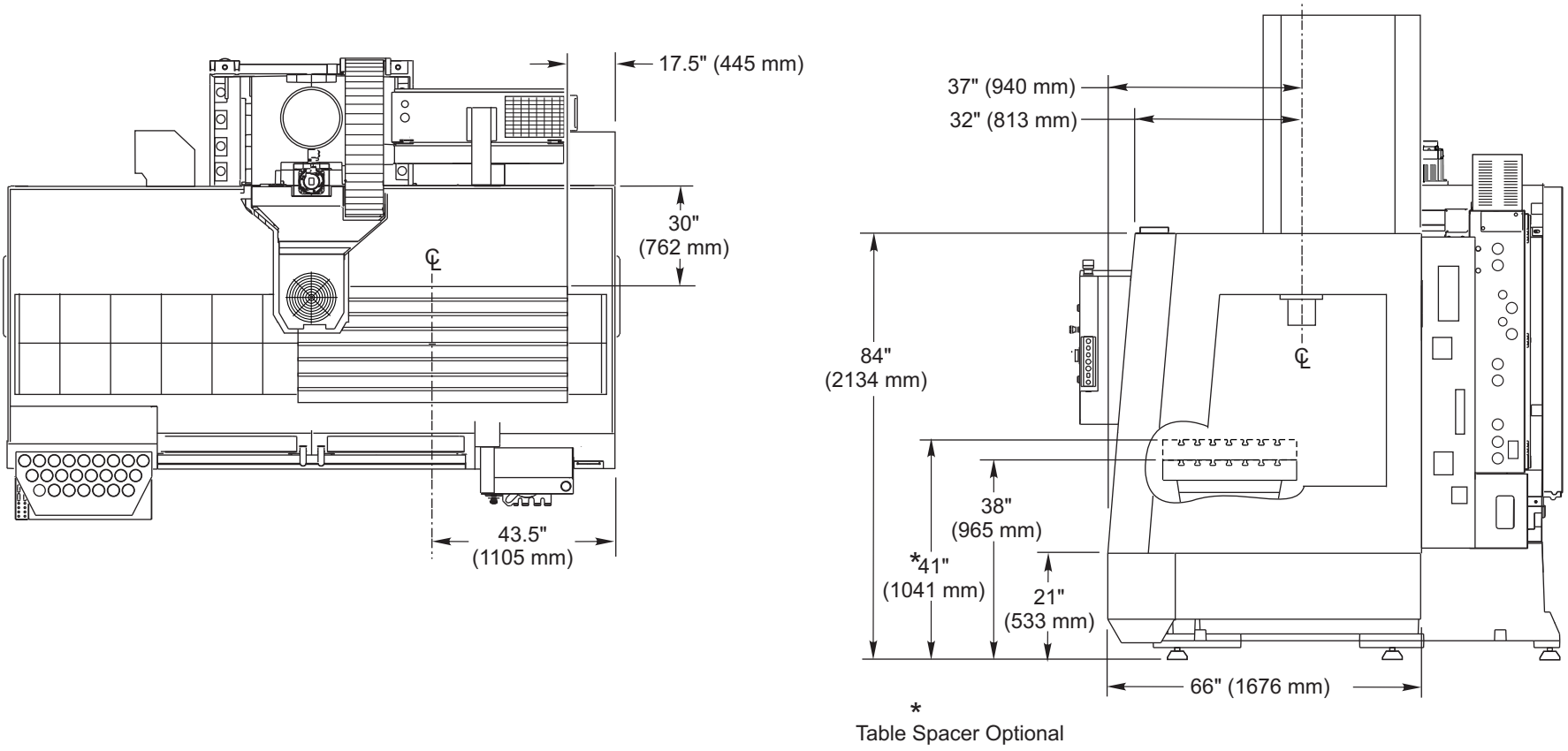
- Notes: 1. Table position(s) at max X and Y travels.  
 2. Measurements are from the edge of Mill table to nearest obstruction (ie. Enclosure, Waycover, Doors, etc.).  
 3. Dimensions are reduced as height above Table increases. ie. Front of enclosure is sloped 5" inward from bottom to top. dimensions shown are at Table top height.

TOP VIEW

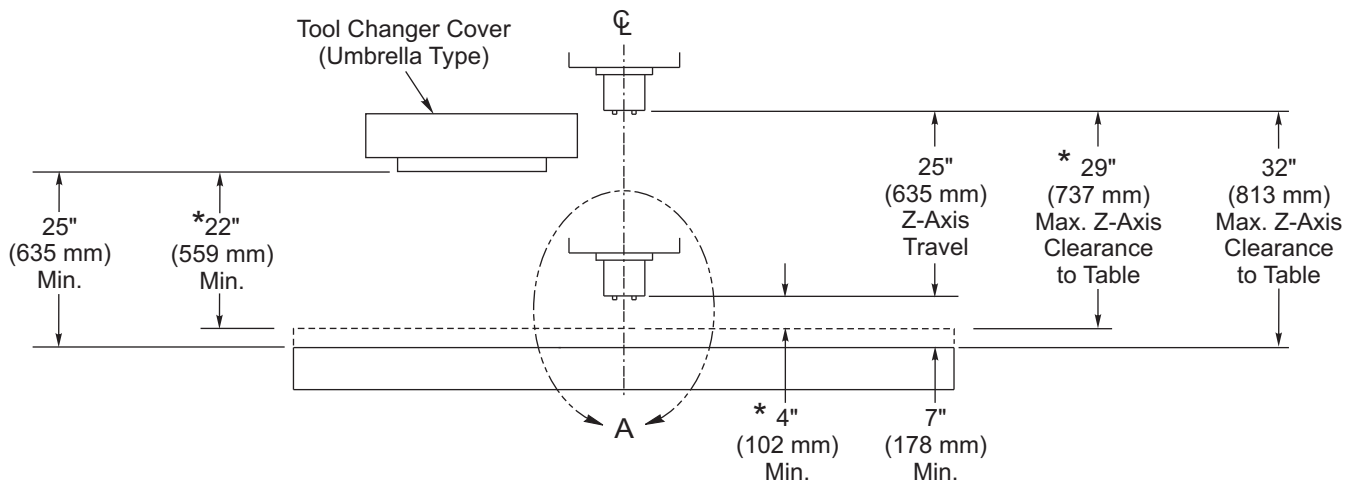


Section A-A (16X)

Detail B (7X)

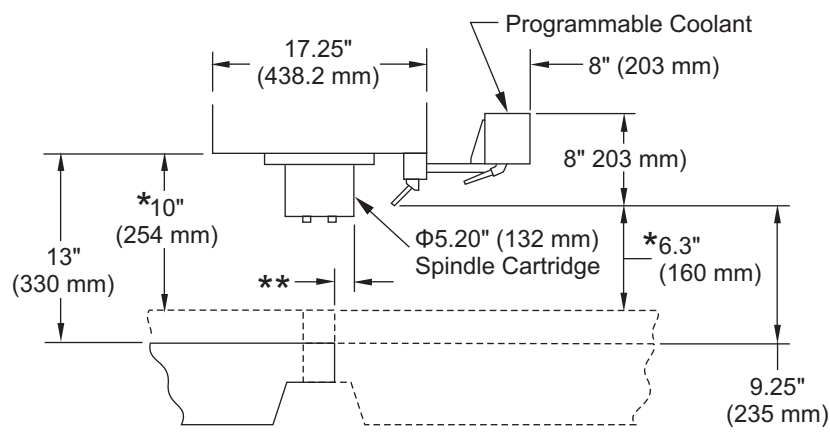


Sheet Metal Enclosure and Table to Exterior Sheet Metal Dimensions



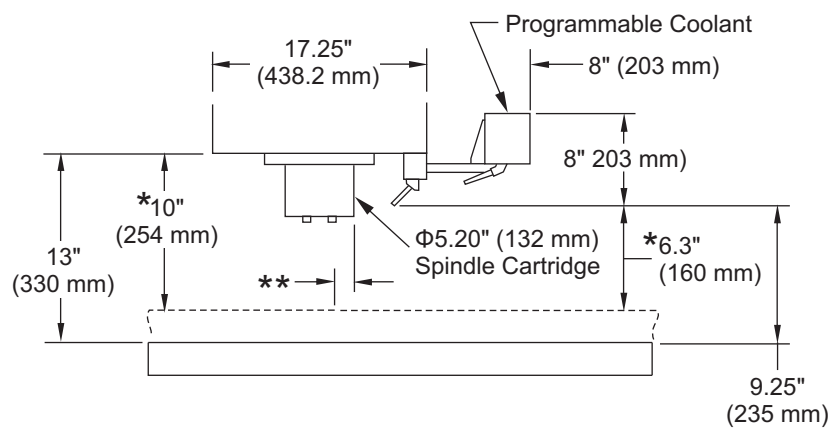
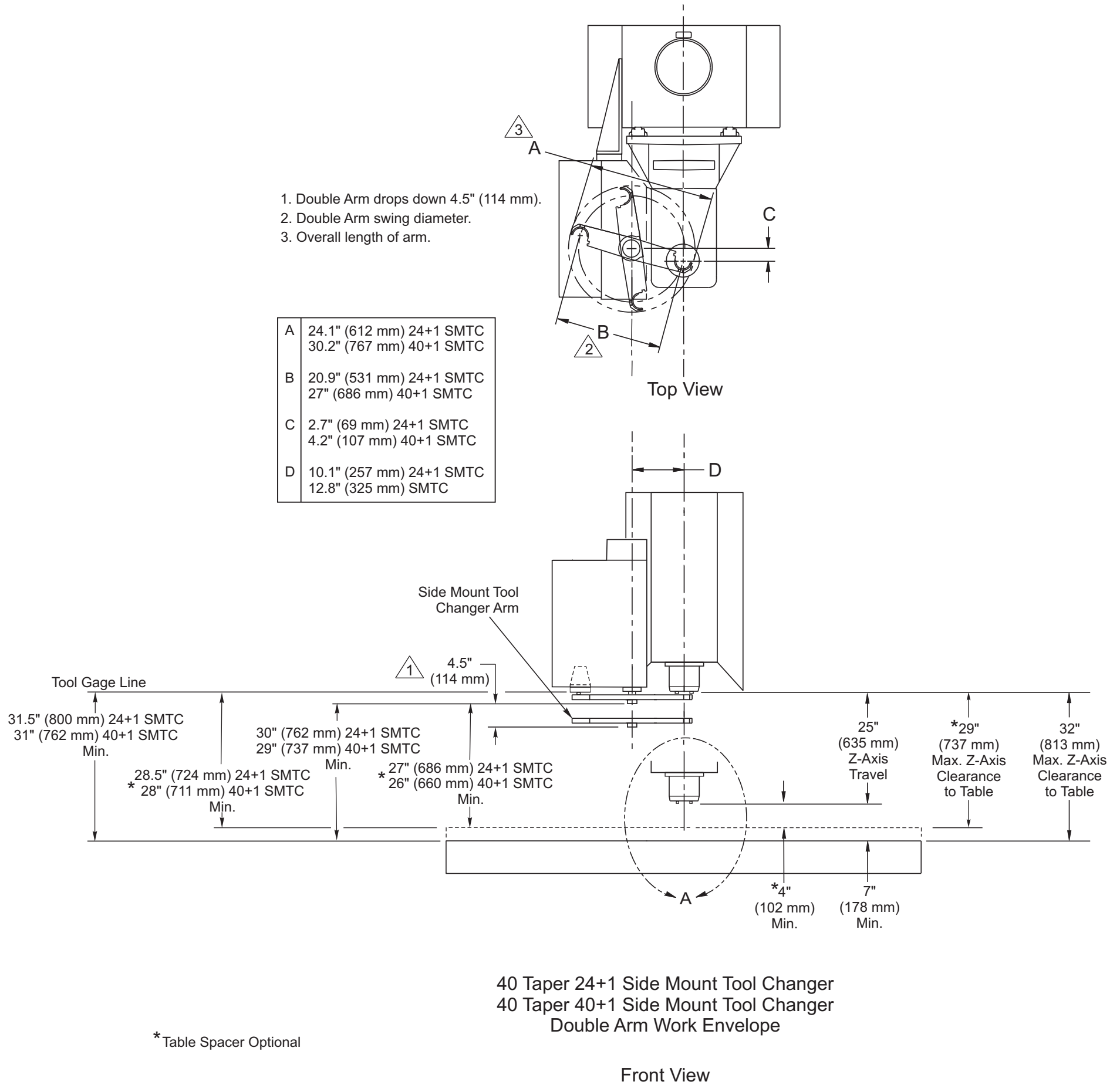
20 Station Carousel Tool Changer  
Front View

\* Table Spacer Optional



\*\* Distance Between Cartridge  
and Table at Max. X-Axis  
Travel is 1.60\"/>

Detail A



\*\* Distance Between Cartridge and Table at Max. X-Axis Travel is 1.60" (40.6 mm)

Detail A