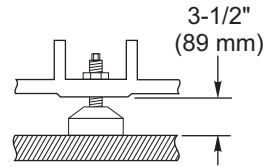
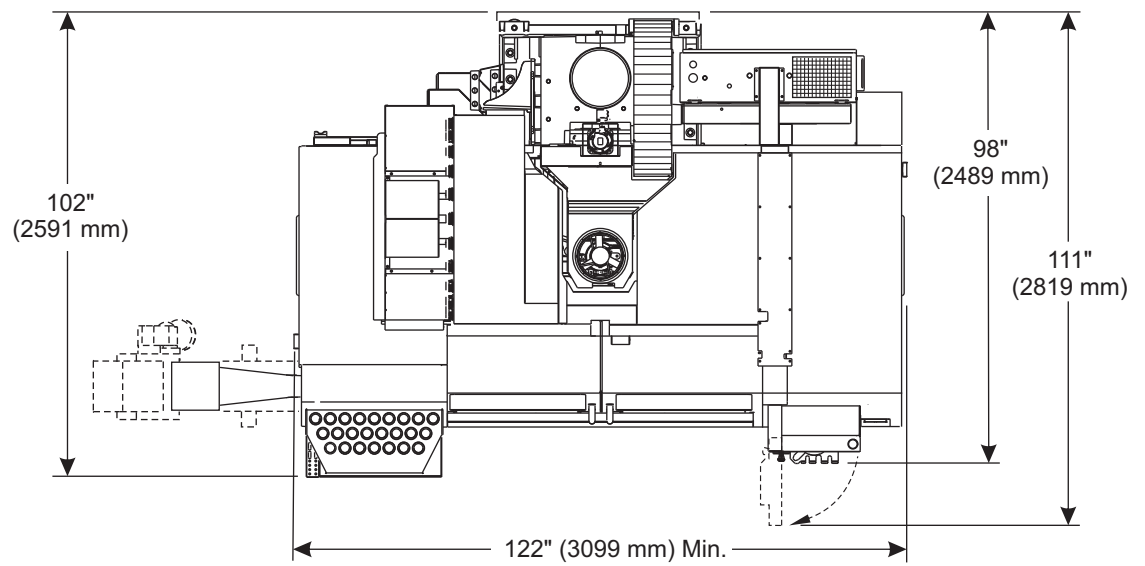
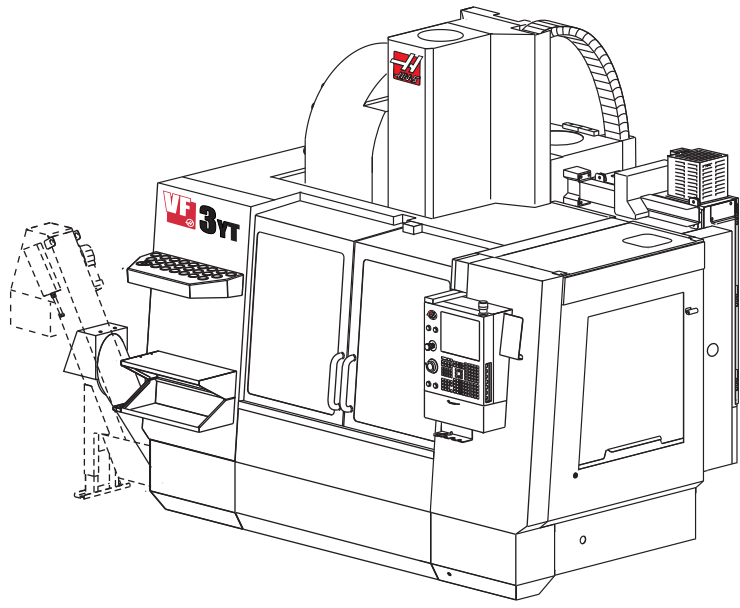
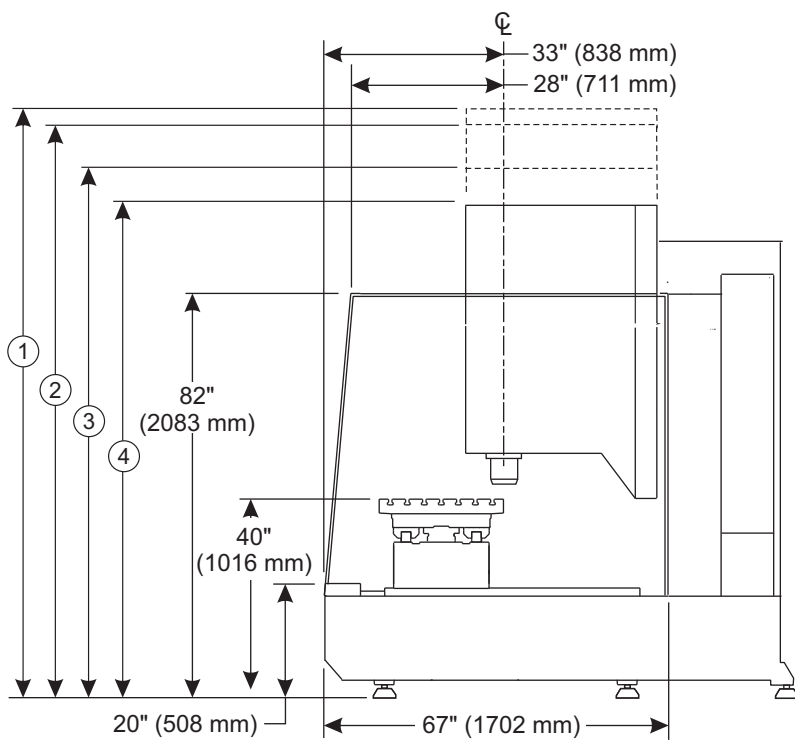




VF-3YT/SSYT Machine Layout Drawing

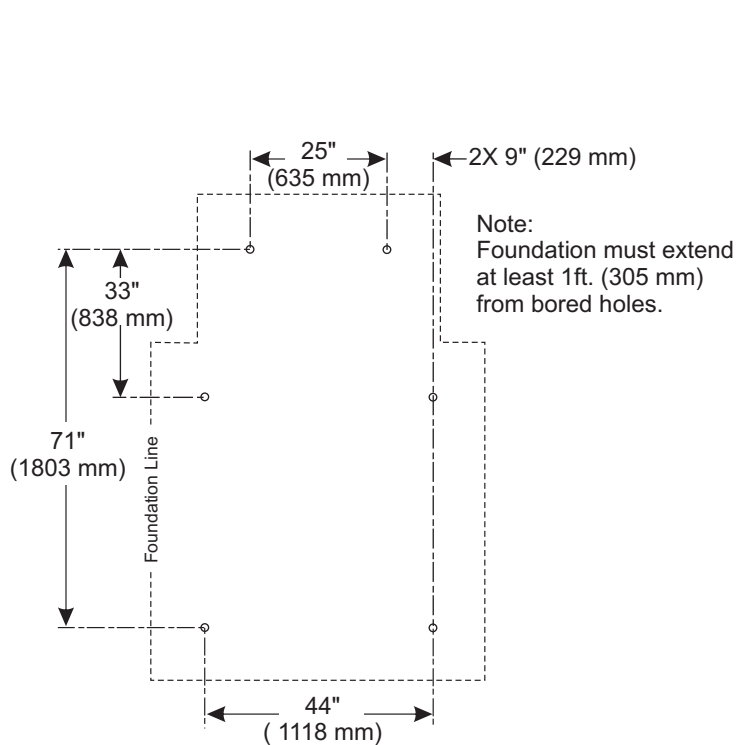
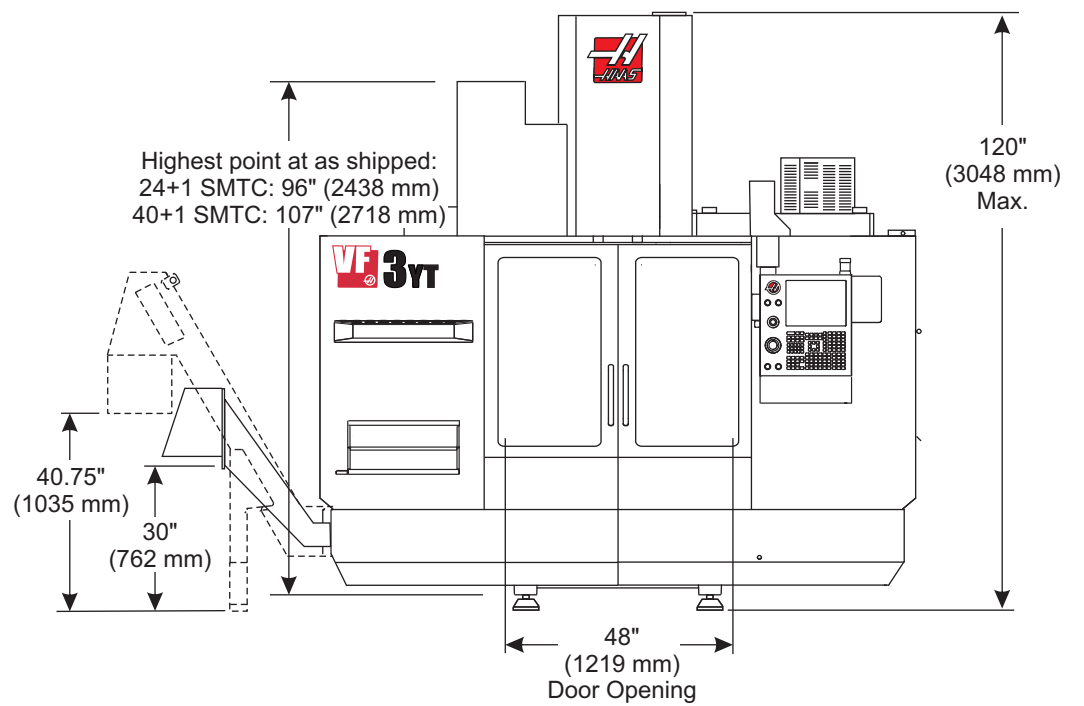


6X Leveling Pad Pin Dimension

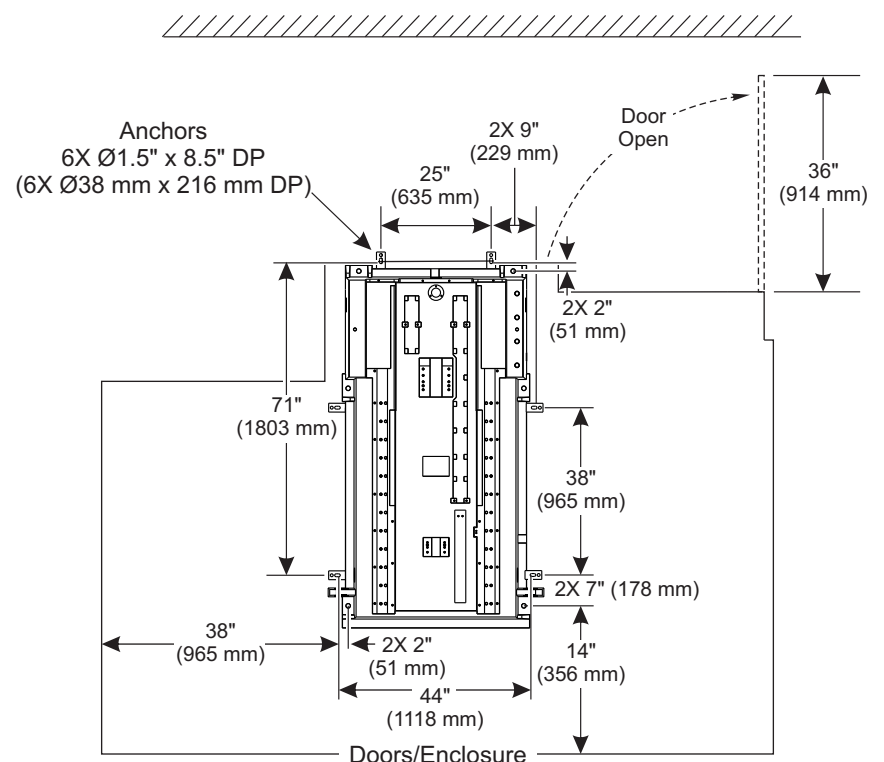


- | | |
|---|---|
| 1 | 120" (3048 mm) Maximum Height |
| 2 | 110" (2794 mm) 40+1 SMTC Sheet Metal Height |
| 3 | 97" (2464 mm) 24+1 SMTC Sheet Metal Height |
| 4 | 94" (2388 mm) Minimum Height |

VF-3YT Sheet Metal Removed for Clarity



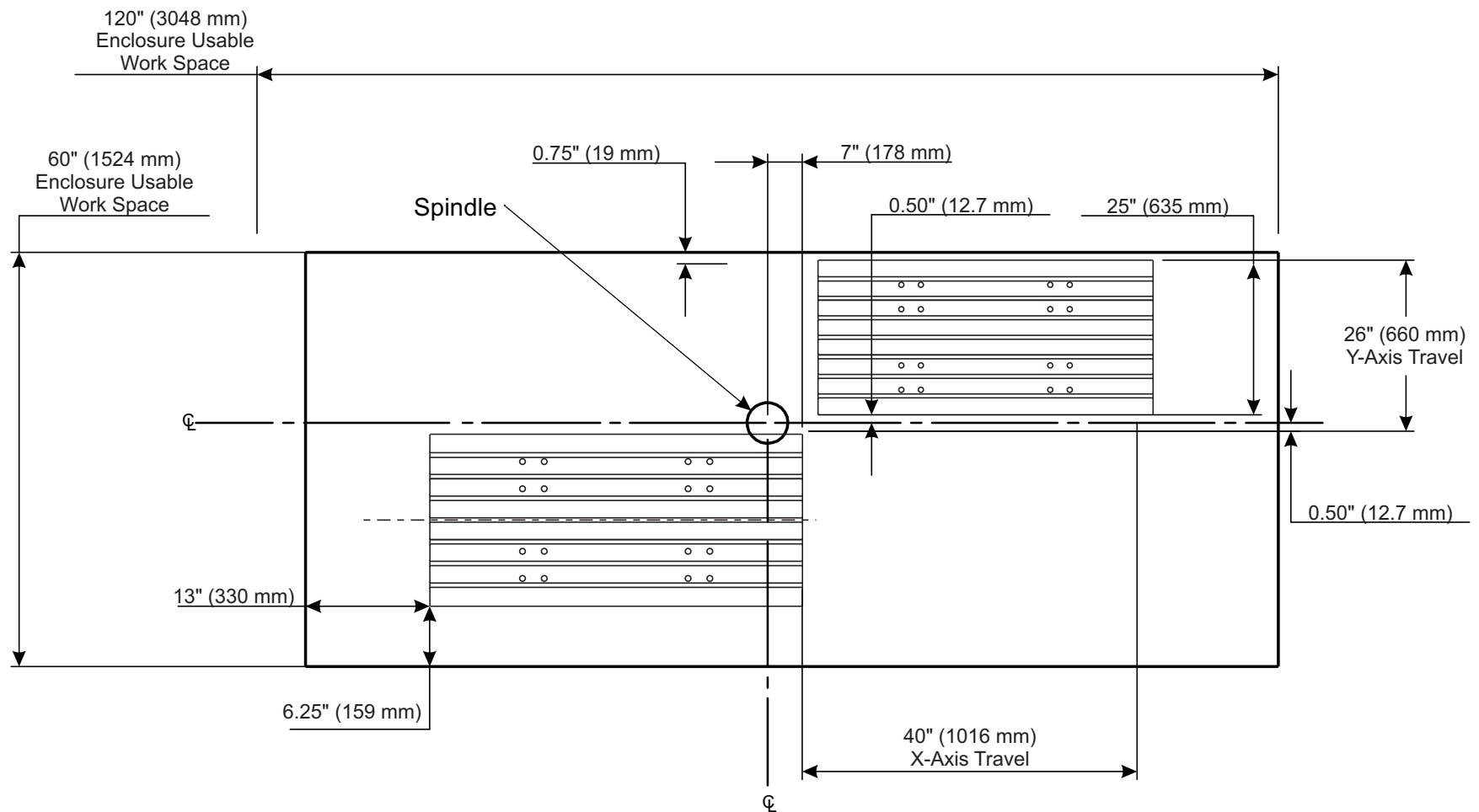
VF-3YT Anchor Pattern





VF-3YT/SSYT Machine Layout Drawing

X/Y Axis Clearances

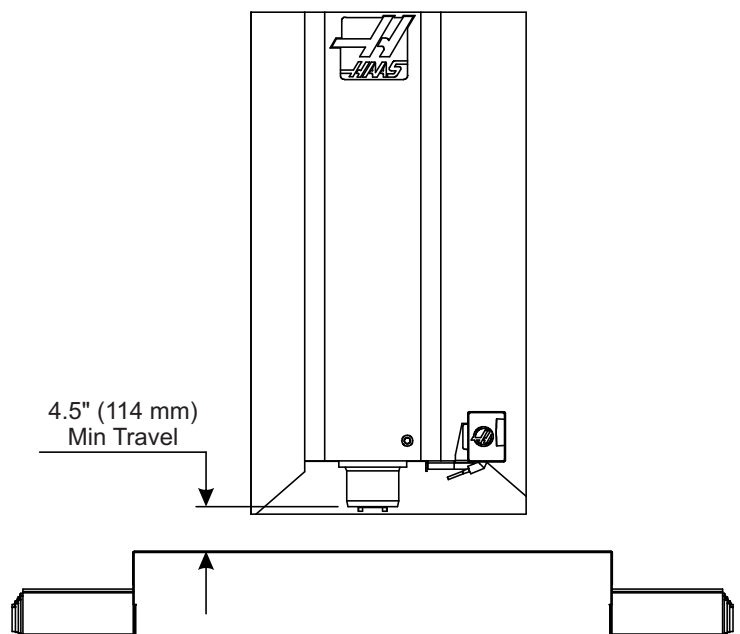
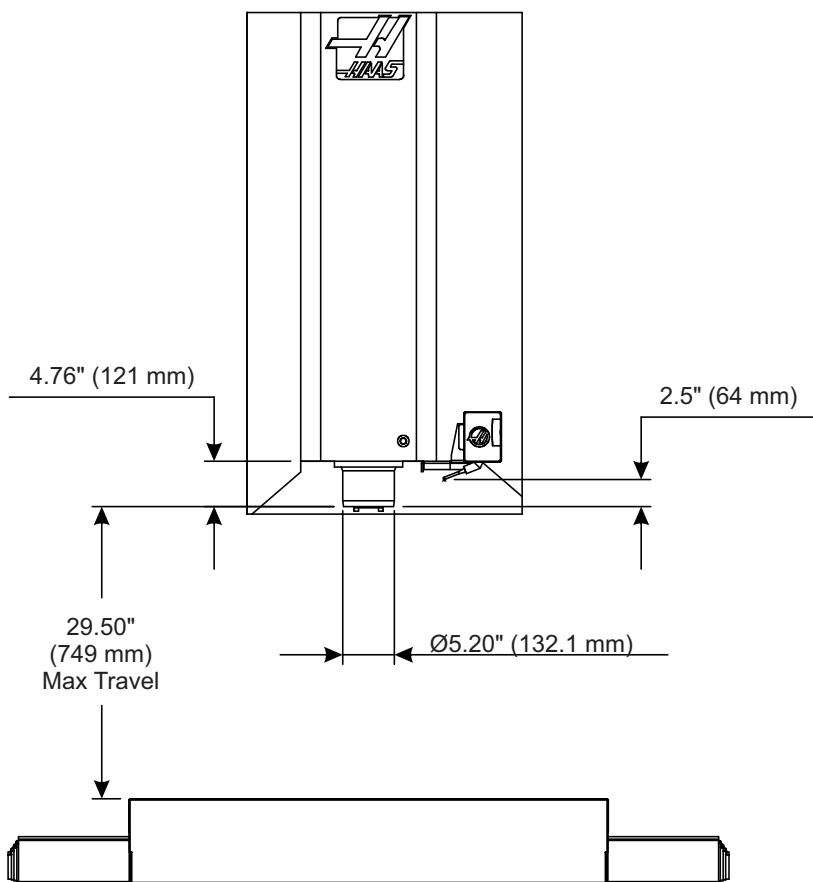


1. The table shown is at XY home, the dashed line is the table at max XY travels
2. Measurements are from the edge of the table to the nearest obstruction
3. Dimensions shown are at the top of the table, dimensions are reduced as the height increases (5 degree slope inside the sheet-metal)
4. Dimensions are symmetrical unless otherwise stated

Z Axis Clearances

Notes:

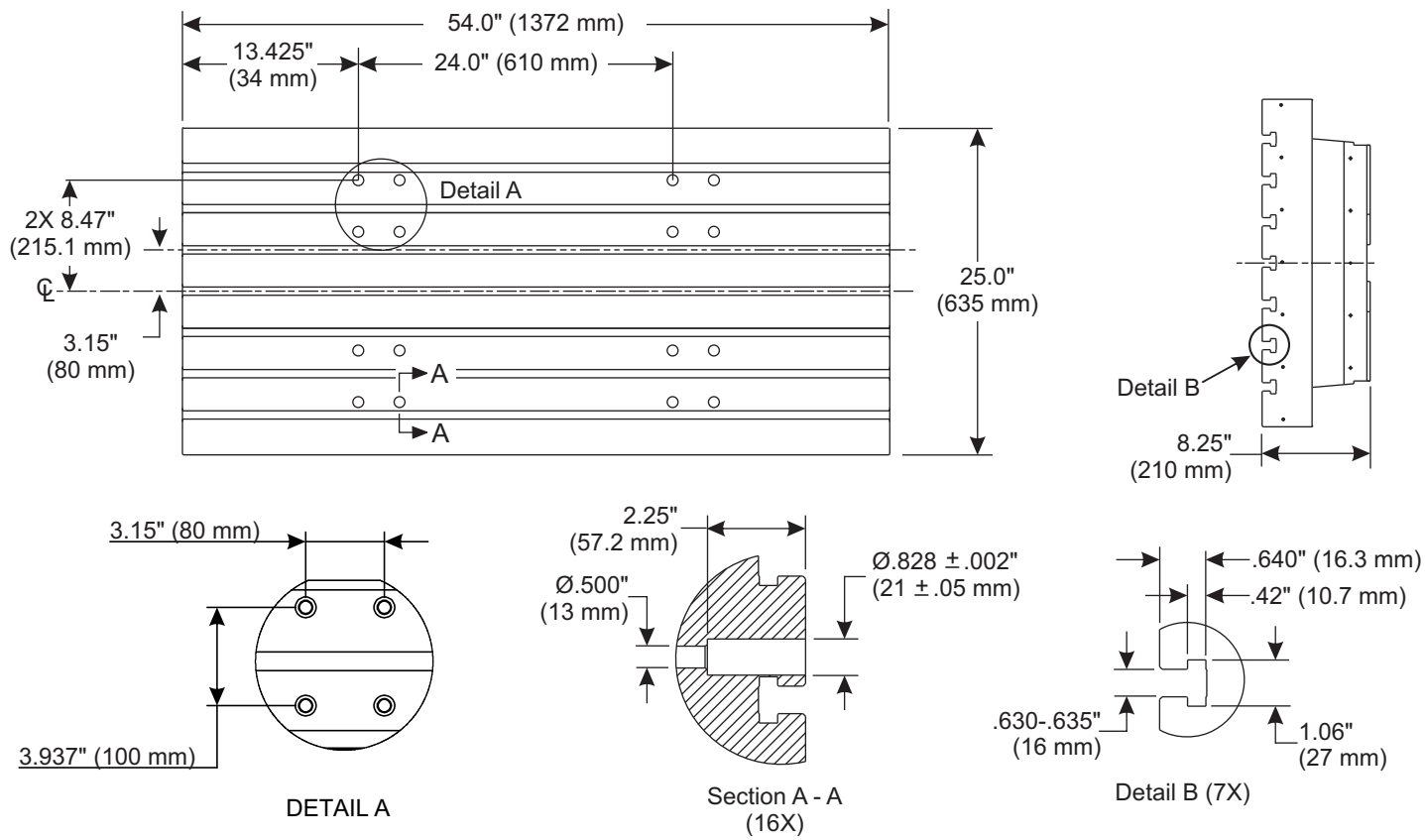
1. The low-profile tables are 6.25in [159mm] lower than the standard table
2. P-Cool dimension varies based on P-Cool Position
3. Refer to the page on tool changer dimensions for tool changer heights



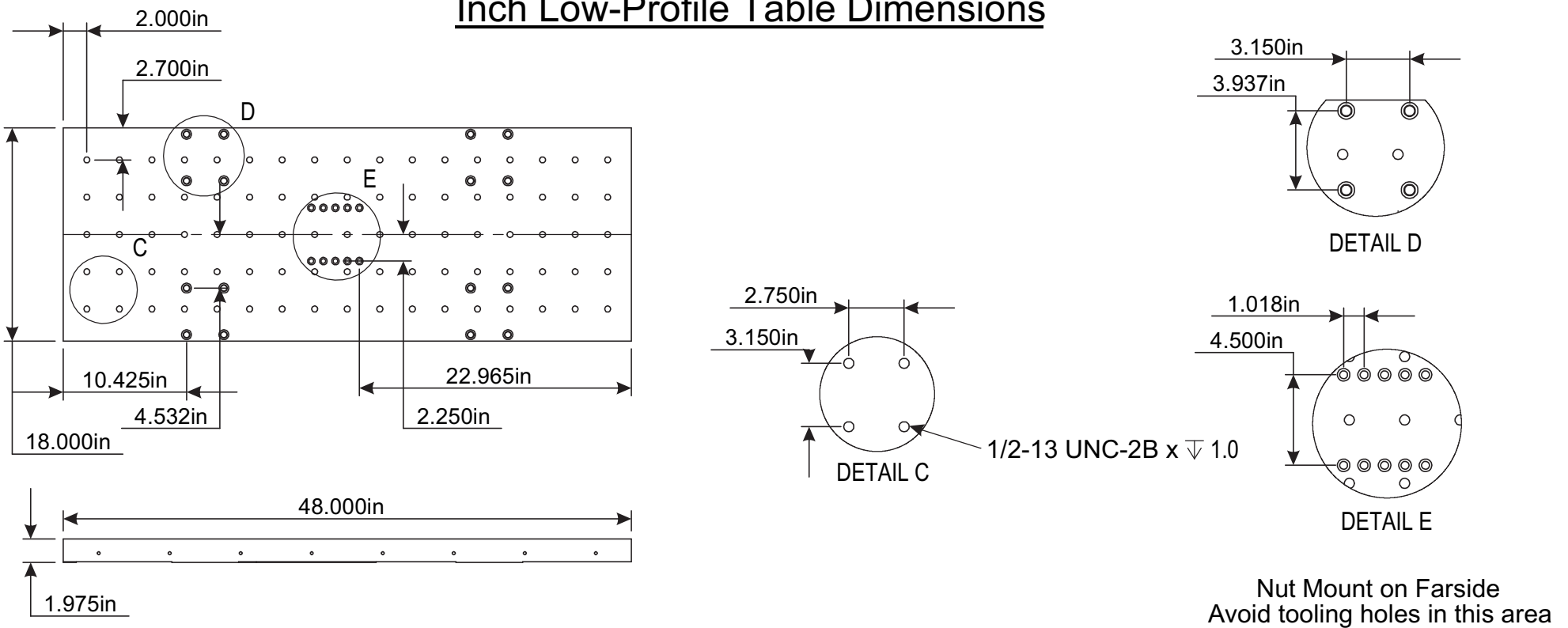


VF-3YT/SSYT Machine Layout Drawing

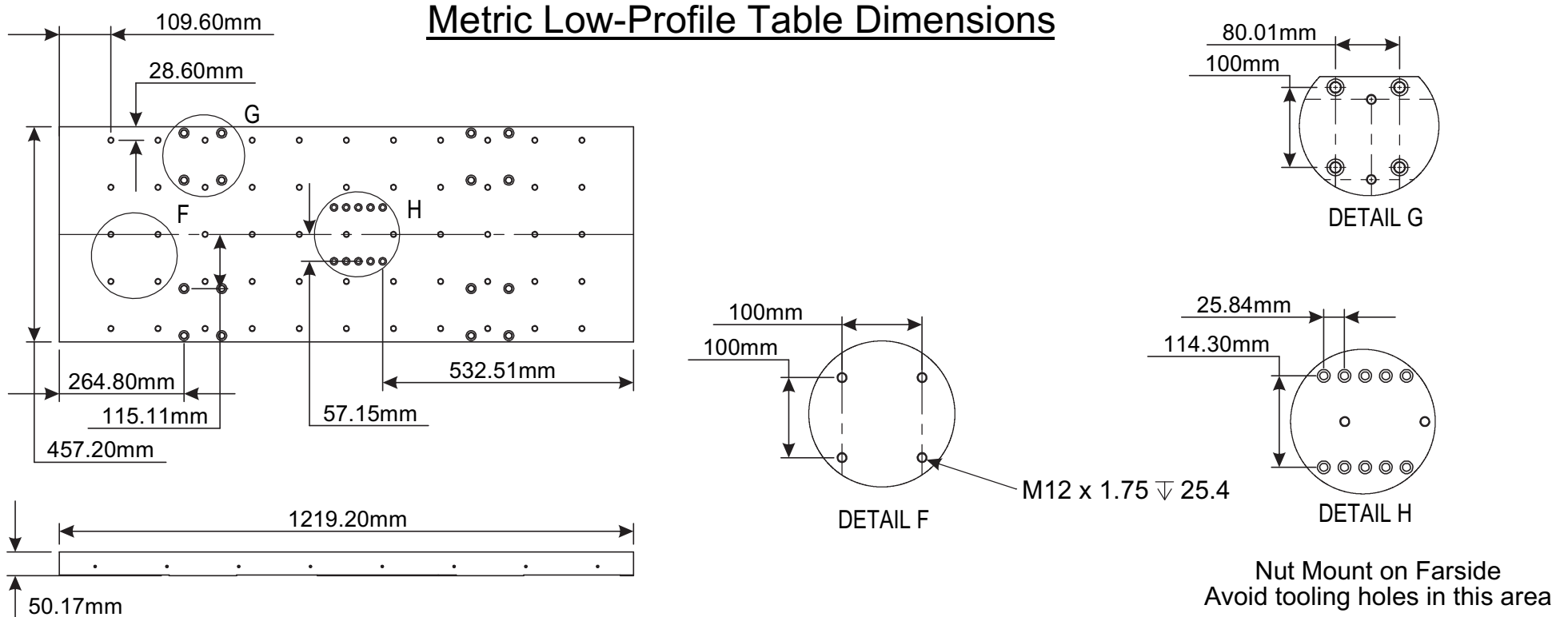
VF-3YT Table Dimensions



Inch Low-Profile Table Dimensions



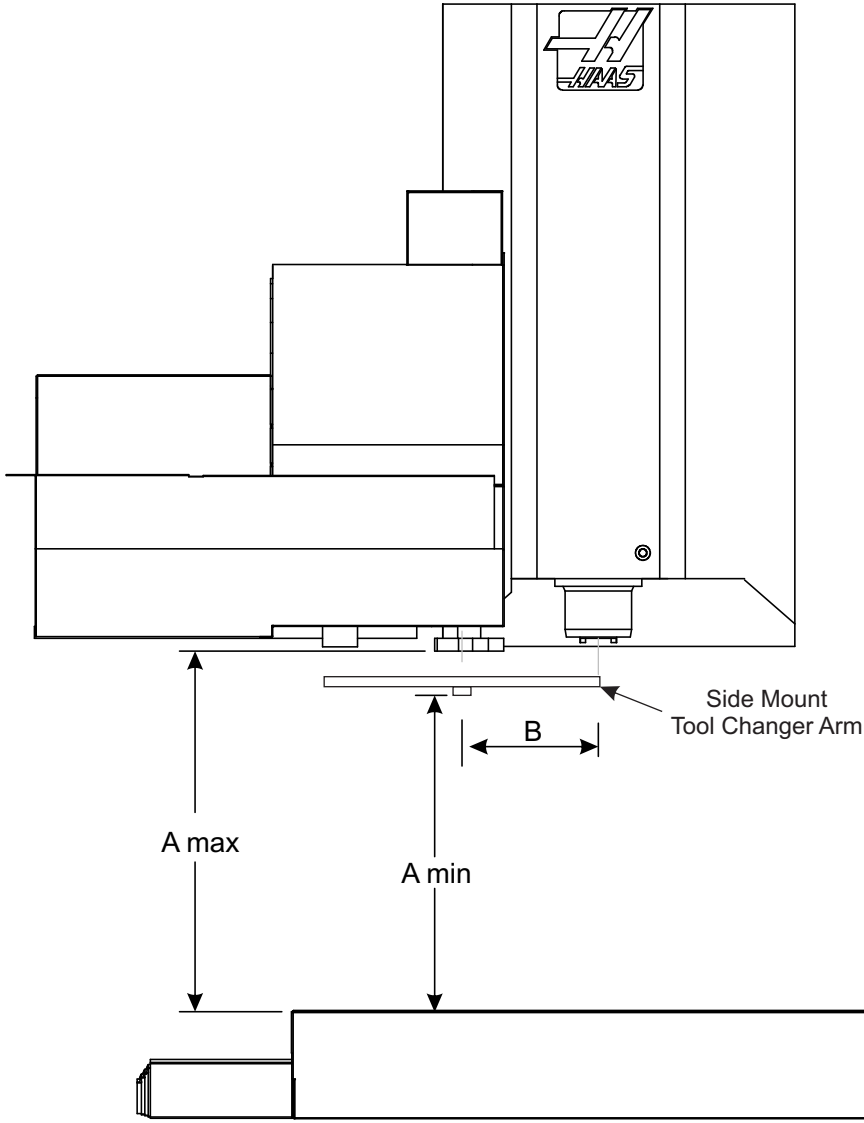
Metric Low-Profile Table Dimensions





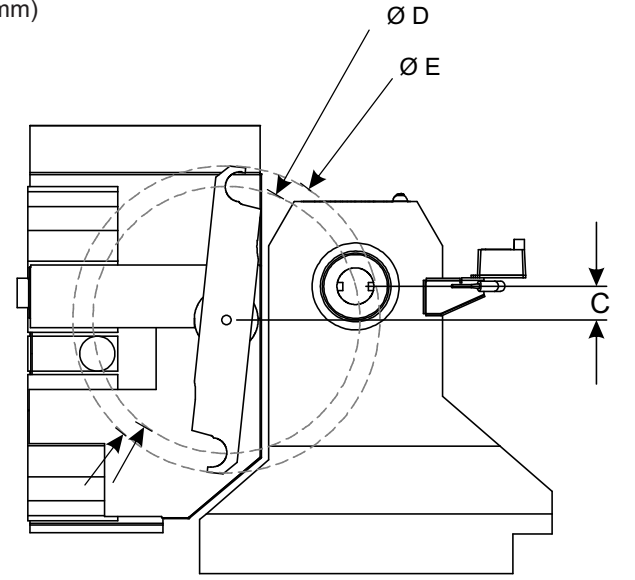
VF-3YT/SSYT Machine Layout Drawing

Side-Mount Tool Changer Travels

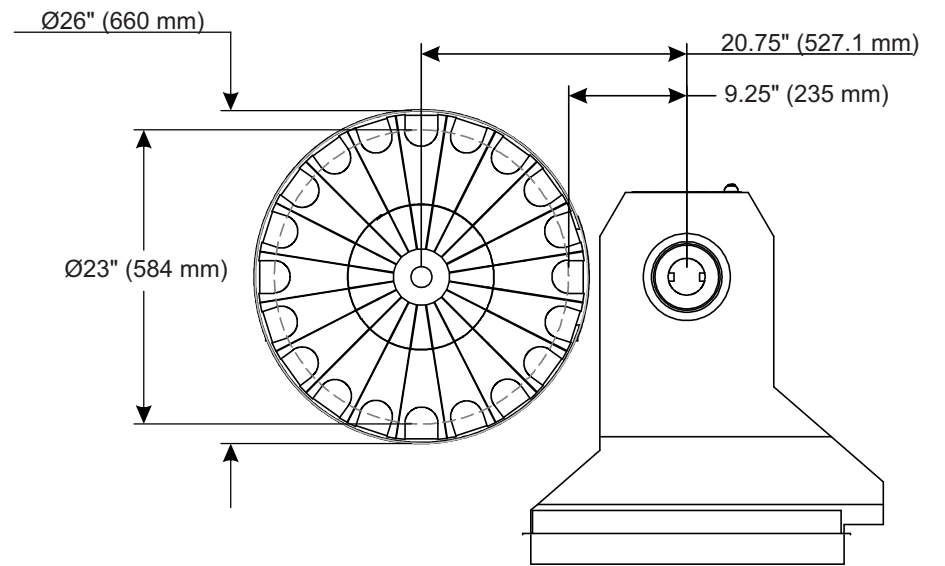
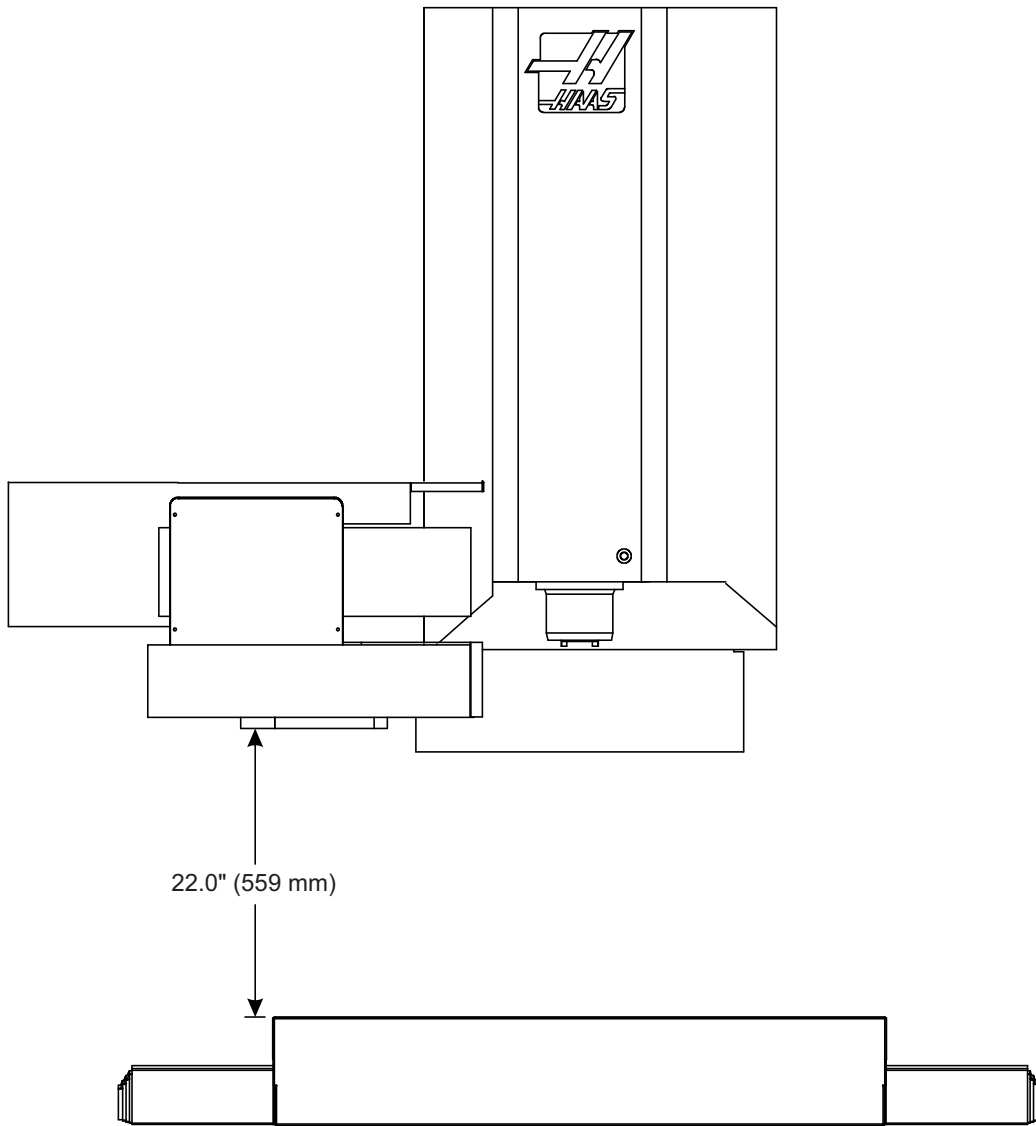


	24+1 Pocket		40+1 Pocket	
A min*	21.50in	546mm	21.50in	546mm
A max*	26.00in	660mm	26.00in	660mm
B	10.00in	254mm	13.00in	330mm
C	3.00in	76mm	5.00in	127mm
D	20.88in	530mm	27.0in	686mm
E	24.08in	612mm	30.0in	762mm

* Low profile table adds 6.25" (159mm) Z-axis clearance



Umbrella Tool Changer Travels



The Umbrella Tool Changer moves in towards the spindle to do a tool change.