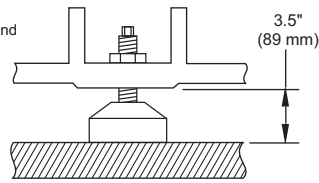


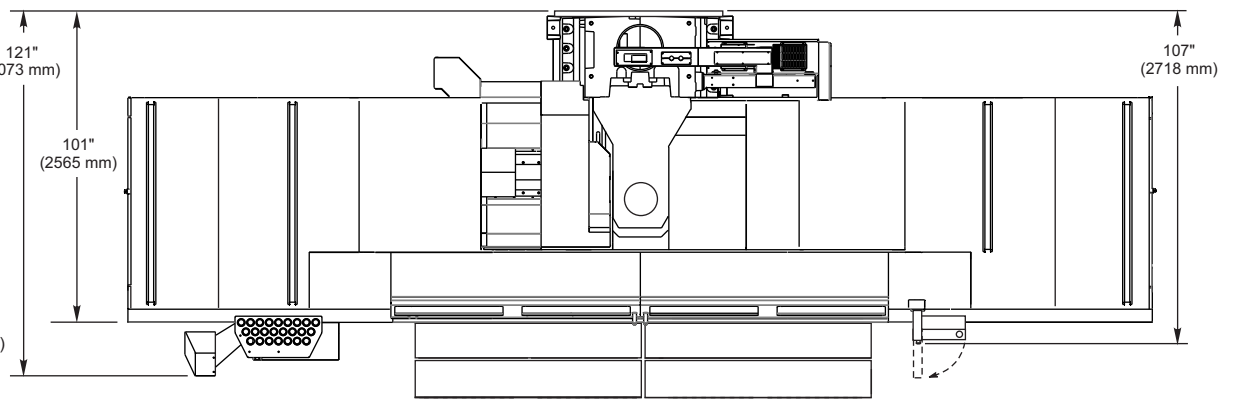
Note:
Foundation must extend at least 1 Ft. (305 mm) from bored holes.
Machines with outriggers (VF-10,12) must have the foundation extend at least 1 ft. (305 mm) from the outrigger leveling pads.

VF-12 Anchor Pattern

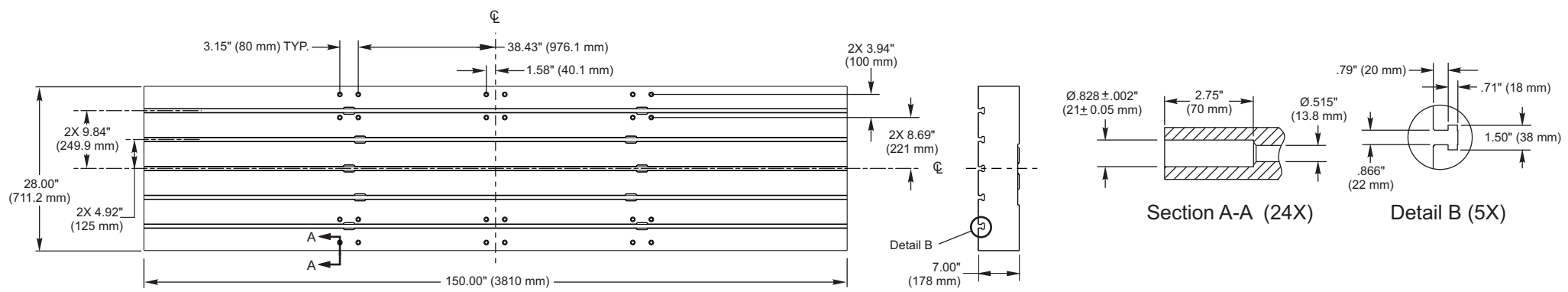
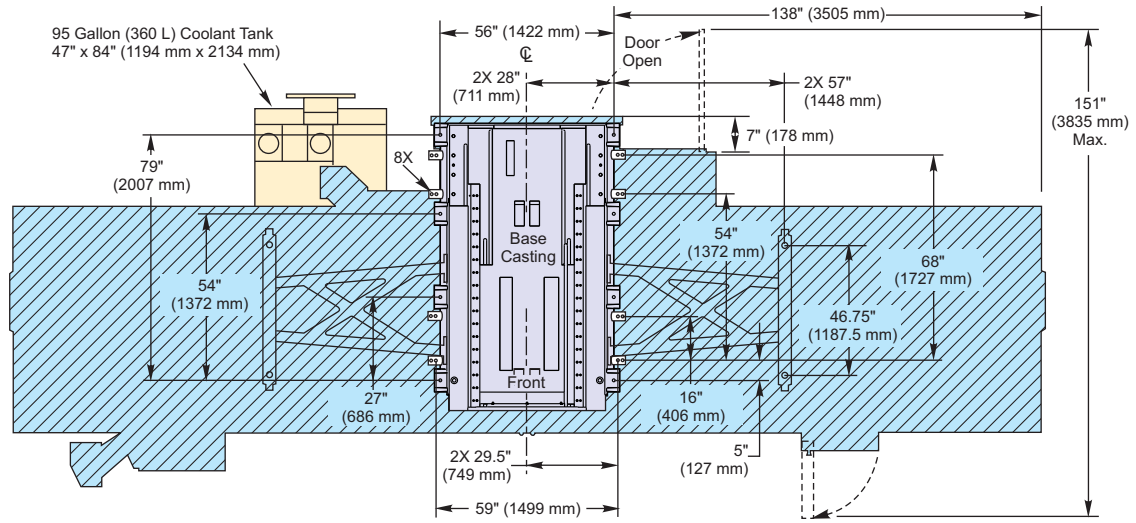
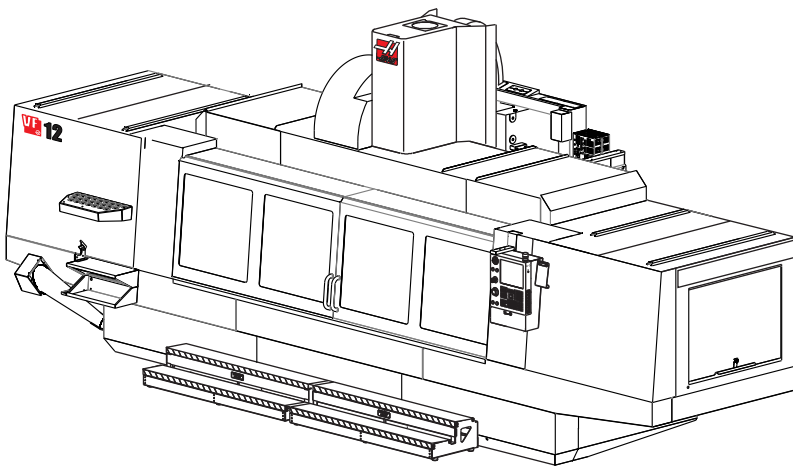
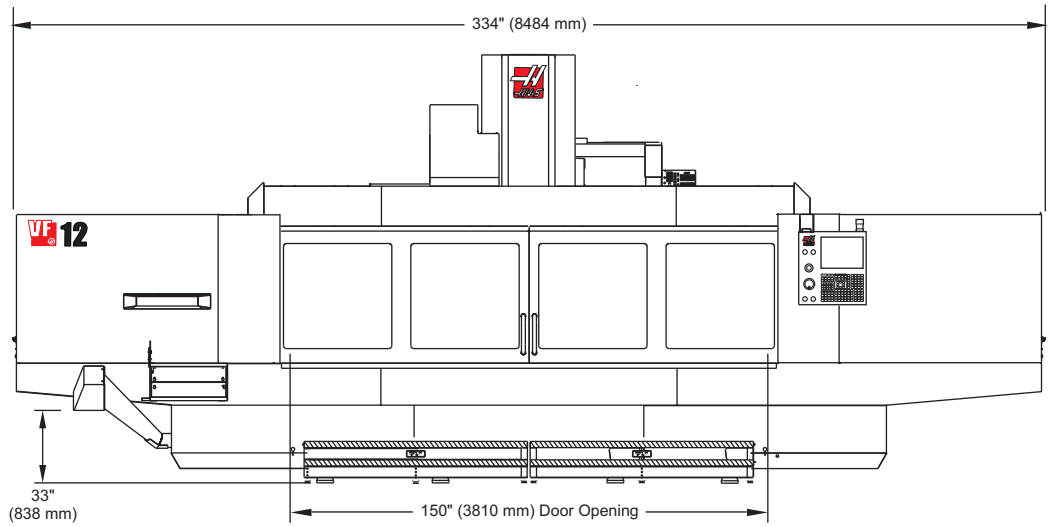
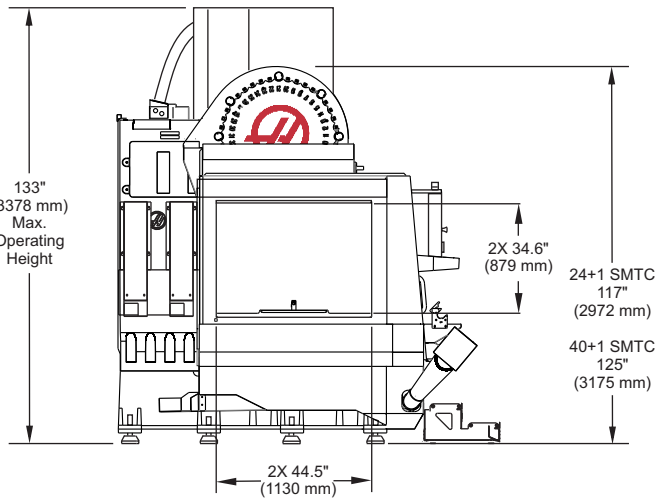


Leveling Pad Pin Dimension

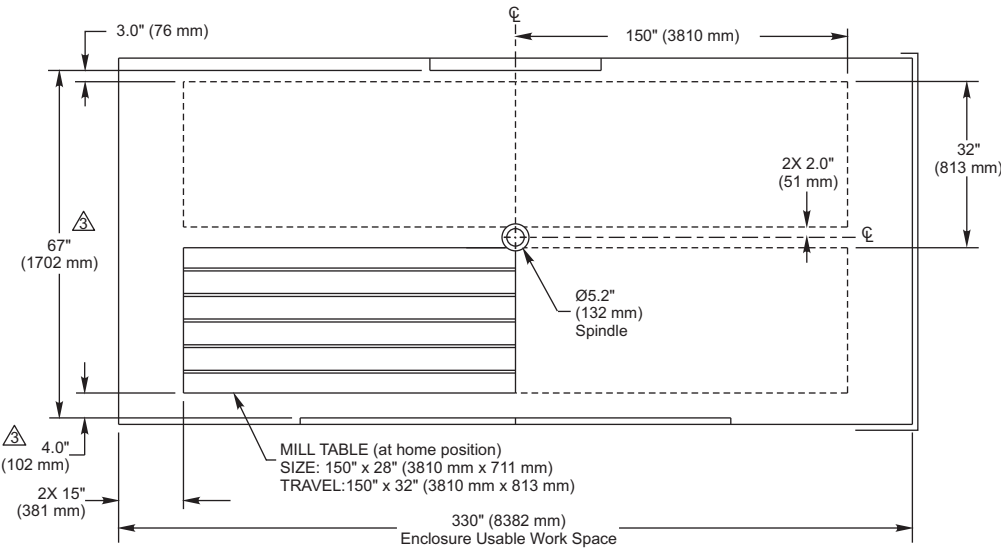
Reference ES0039
Machine Clearance Heights



2x Two-Step Operator Platform included
Dimensions of each platform:
Length: 72.5" (1842 mm)
Width: 23.5" (570 mm)
Height: 12.5" (318 mm)



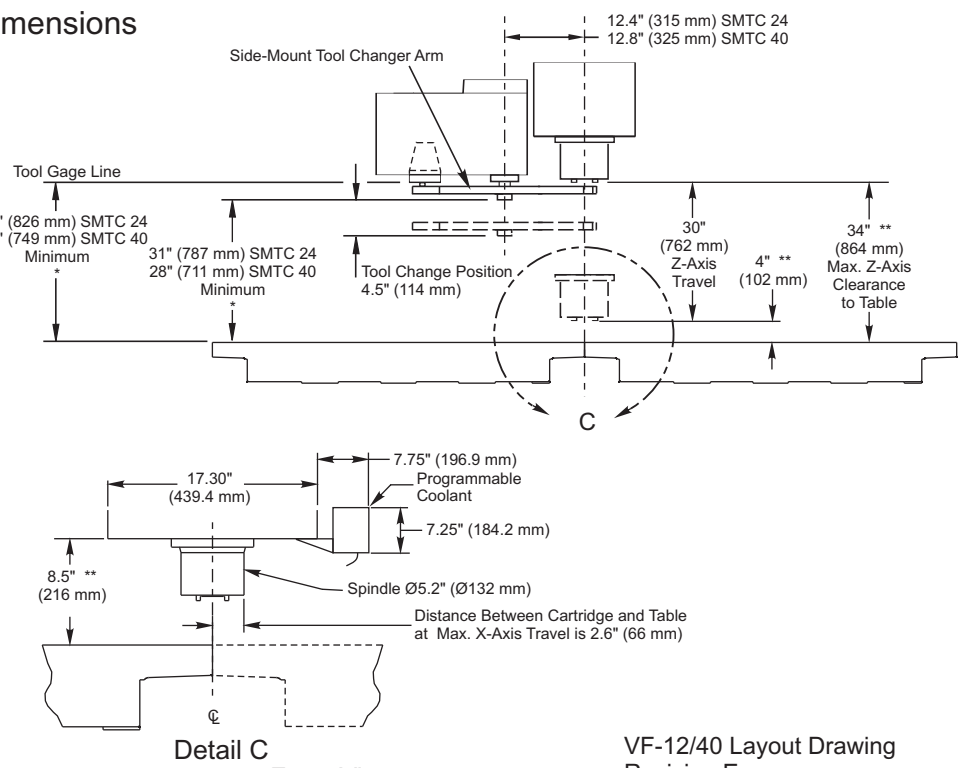
VF-12 Table Dimensions



NOTES:
1. TABLE POSITION(S) AT MAX X & Y TRAVELS.
2. MEASUREMENTS ARE FROM THE EDGE OF MILL TABLE TO NEAREST OBSTRUCTION (ie. ENCLOSURE, WAY COVER, DOORS, ETC.).
3. DIMENSIONS ARE REDUCED AS HEIGHT ABOVE TABLE INCREASES; ie. FRONT OF ENCLOSURE IS SLOPED 5° INWARD FROM BOTTOM TO TOP. DIMENSIONS SHOWN ARE AT TABLE TOP HEIGHT.

Top View

VF-12/40 Enclosure Usable Work Space



Detail C
Front View

VF-12/40 Layout Drawing
Revision E
Oct, 2015