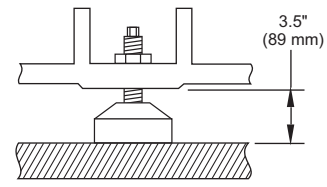
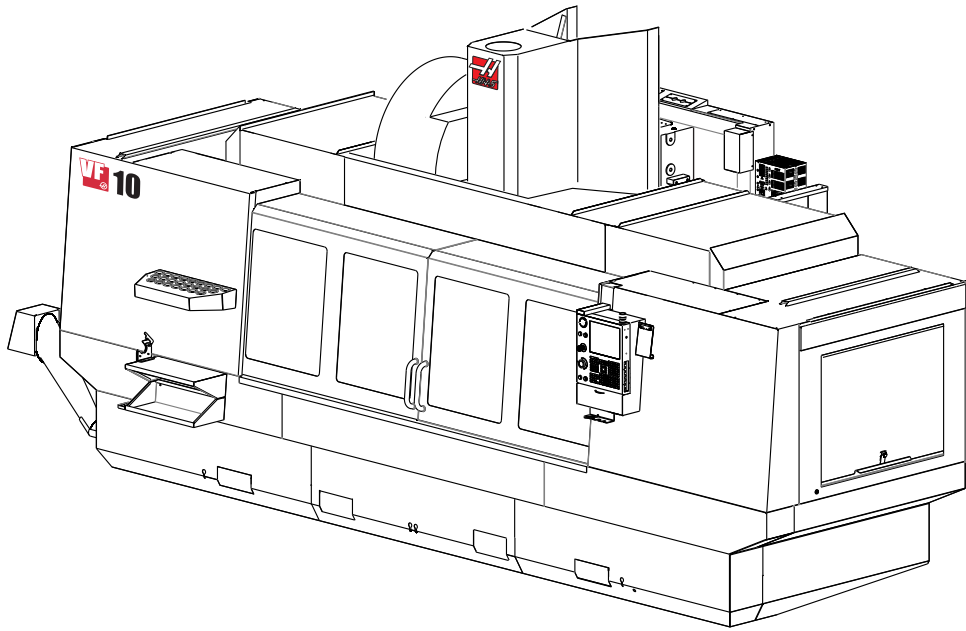
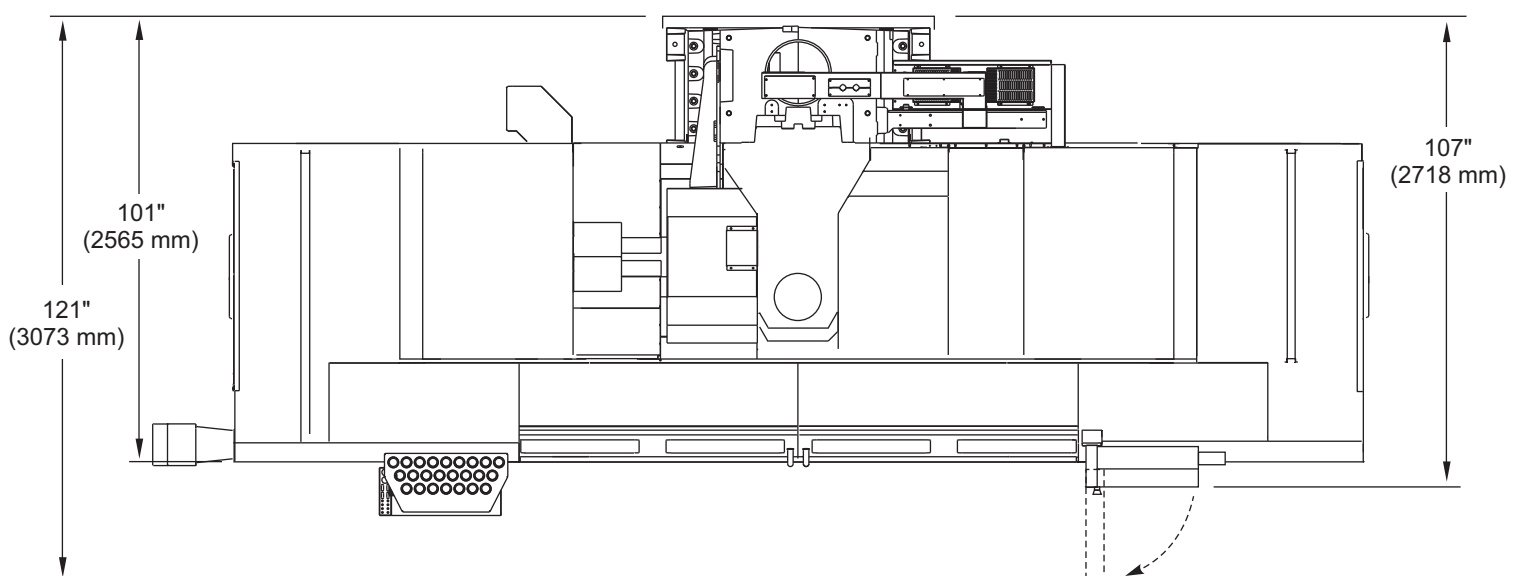
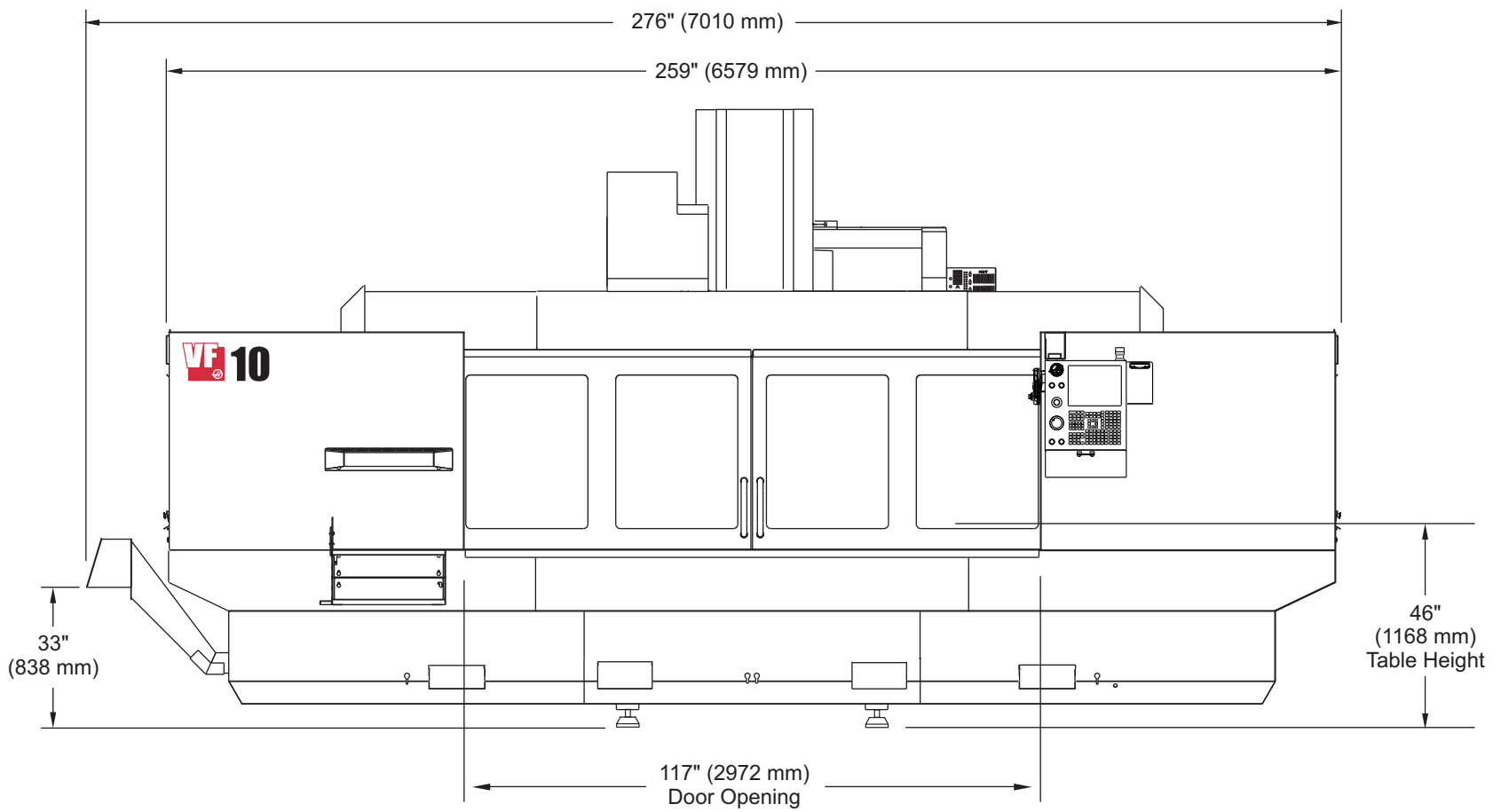


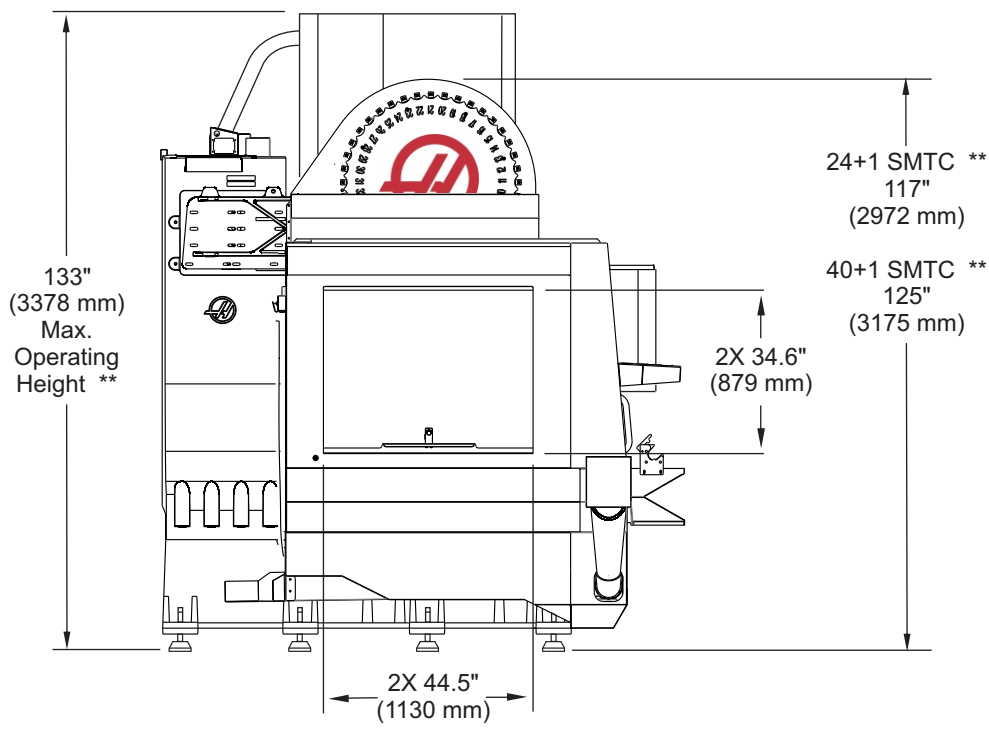
# VF-10/40 Machine Layout Drawing



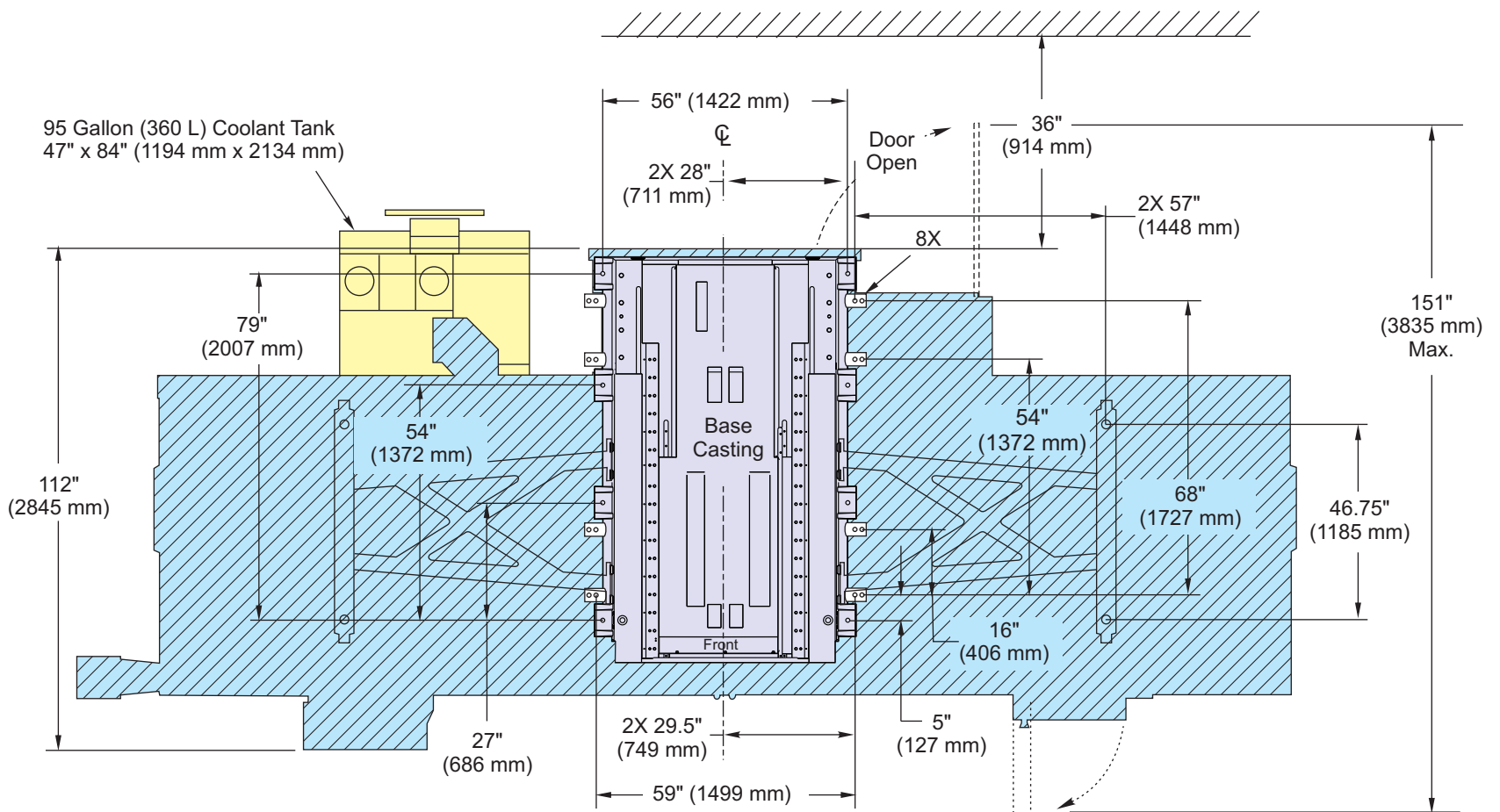
Leveling Pad Pin Dimension  
Reference ES0039  
Machine Clearance Heights



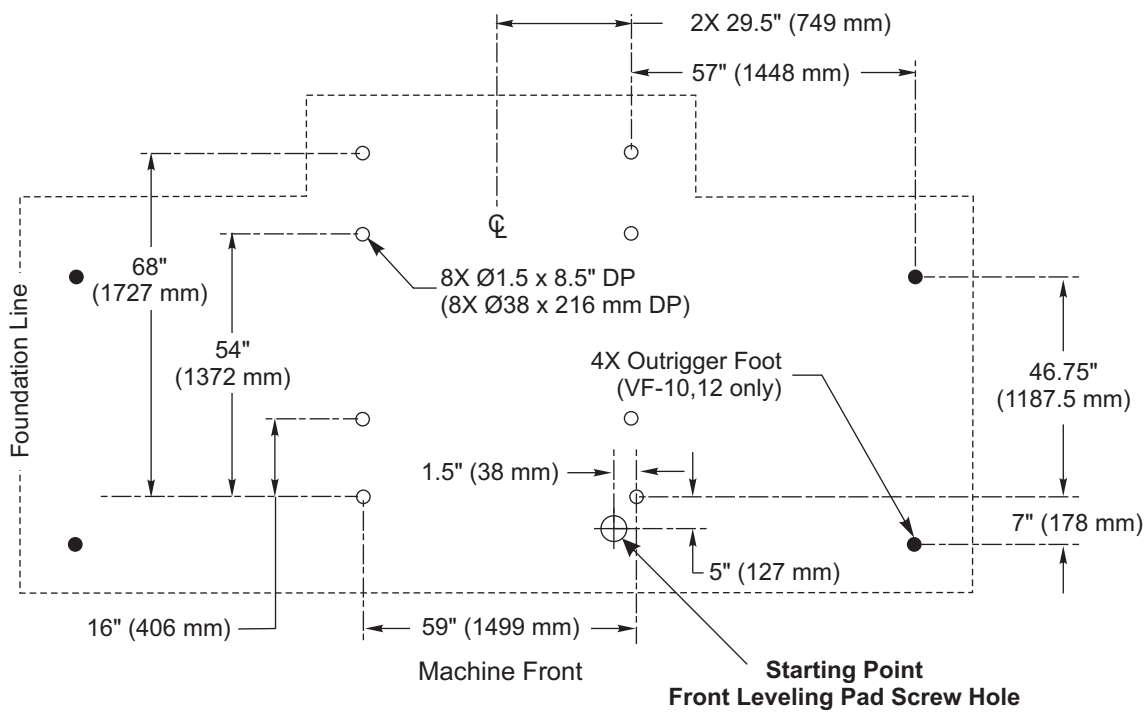
2x Two-Step Operator Platform included (not shown)  
Dimensions of each platform:  
Length: 72.5" (1842 mm)  
Width: 23.5" (570 mm)  
Height: 12.5" (318 mm)



\*\* Extended Z-Axis Clearance Option add 8" (203 mm)

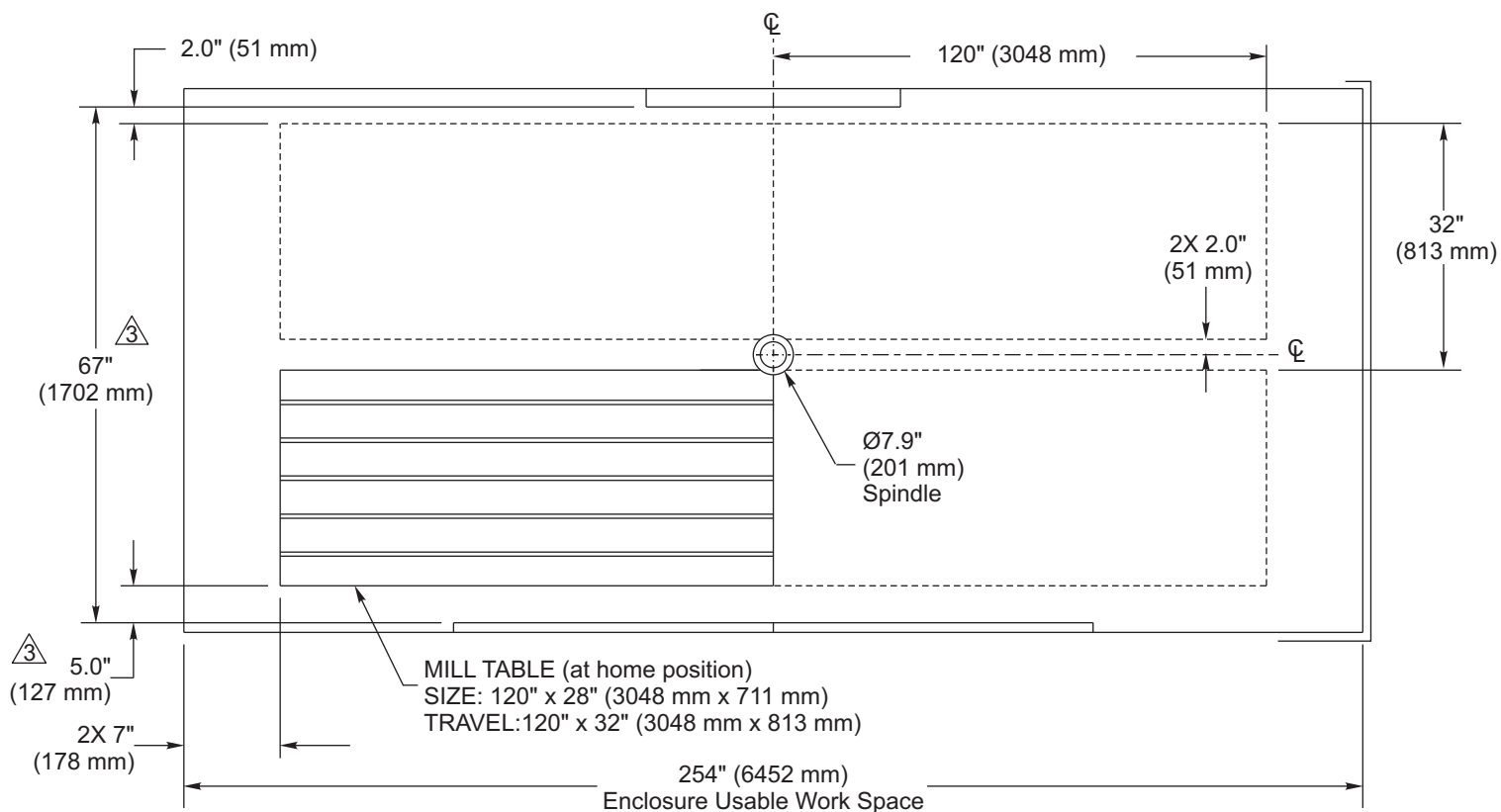


Note:  
Foundation must extend at least 1 Ft. (305 mm) from bored holes.  
Machines with outriggers (VF-10,12) must have the foundation extend at least 1 ft. (305 mm) from the outrigger leveling pads.



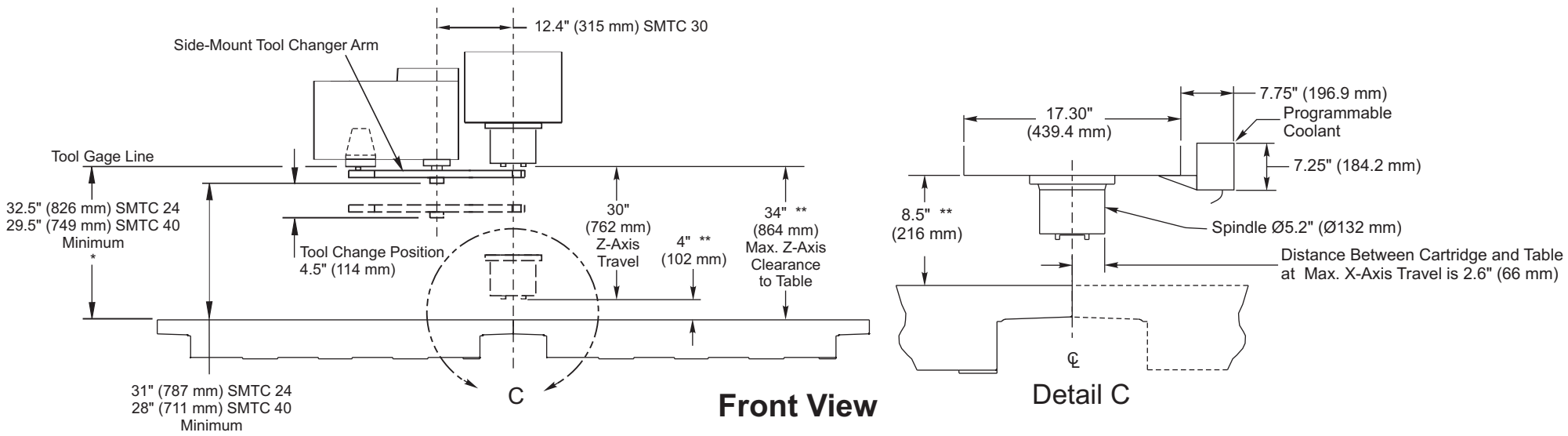
## VF-10 Anchor Pattern

### VF-10/50 Work Space Envelope



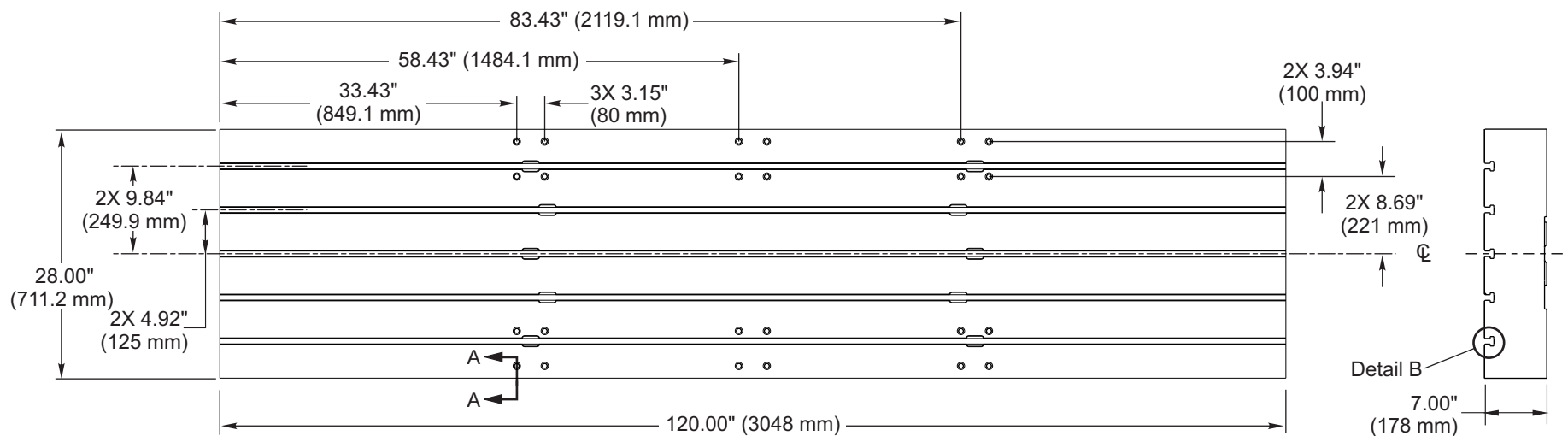
- NOTES:**
1. TABLE POSITION(S) AT MAX X & Y TRAVELS.
  2. MEASUREMENTS ARE FROM THE EDGE OF MILL TABLE TO NEAREST OBSTRUCTION (ie. ENCLOSURE, WAY COVER, DOORS, ETC.).
  3. DIMENSIONS ARE REDUCED AS HEIGHT ABOVE TABLE INCREASES; ie. FRONT OF ENCLOSURE IS SLOPED 5° INWARD FROM BOTTOM TO TOP. DIMENSIONS SHOWN ARE AT TABLE TOP HEIGHT.

**Top View**

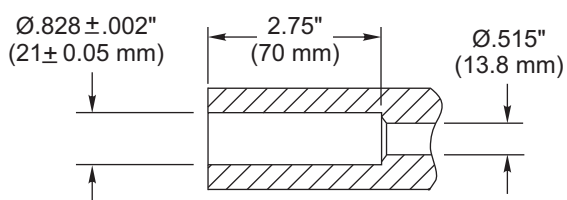


**Front View**

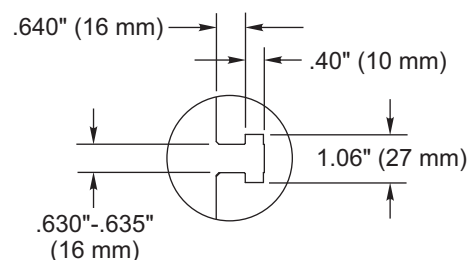
**Detail C**



### VF-10 Table Dimensions



**Section A-A (24X)**



**Detail B (5X)**

VF-10/40 Rev D  
Page 3 of 3  
June, 2016