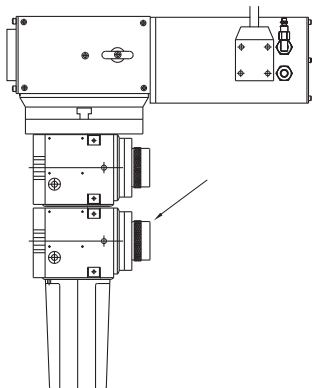
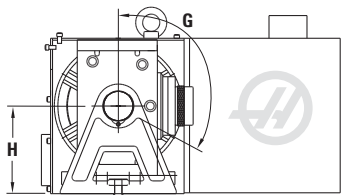
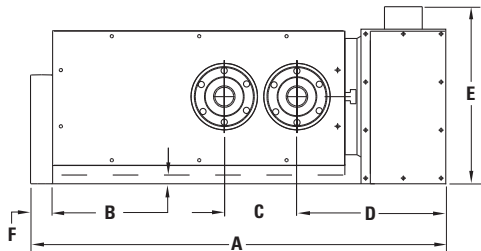


T5C Two, Three & Four Spindle



DIMENSIONS (Inches Millimeters)

	T5C-2	T5C-3	T5C-4
A	28.64 727.5	33.64 854.5	38.64 981.5
B	0.55 14.0	0.55 14.0	0.55 14.0
C	5.000 TYP 127.00 TYP	5.000 TYP 127.00 TYP	5.000 TYP 127.00 TYP
D	10.30 261.6	10.30 261.6	10.30 261.6
E	12.39 314.7	12.39 314.7	12.39 314.7
F	1.50 34.1	1.50 34.1	1.50 34.1
G	±120°	±120°	±120°
H	6.000 152.40	6.000 152.40	6.000 152.40
J	4.47" ±0.02 113.5 ±0.5	4.47" ±0.02 113.5 ±0.5	4.47" ±0.02 113.5 ±0.5

B = Minimum Clearance