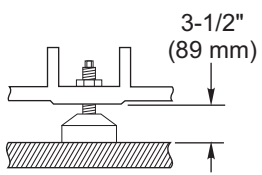
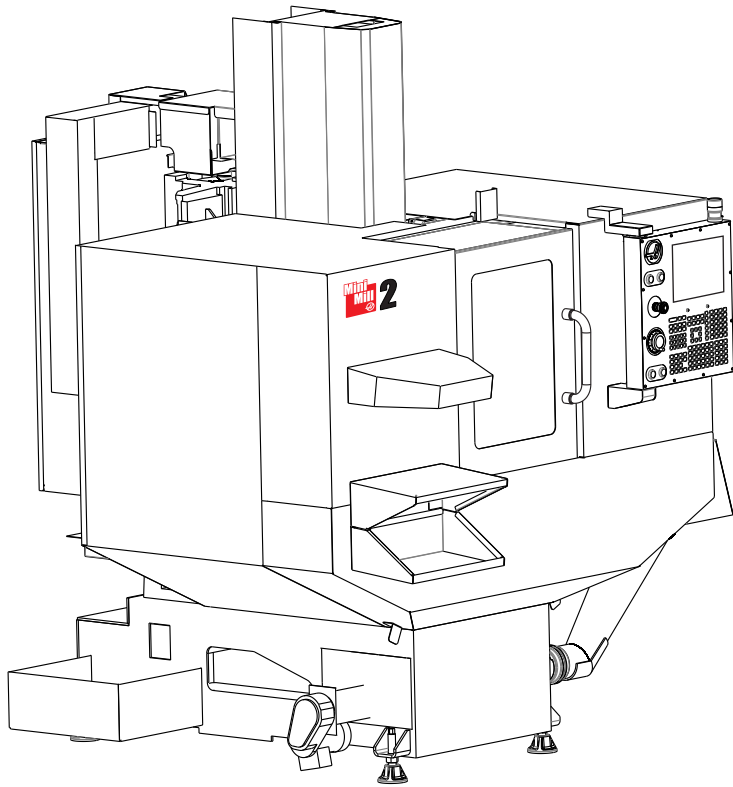
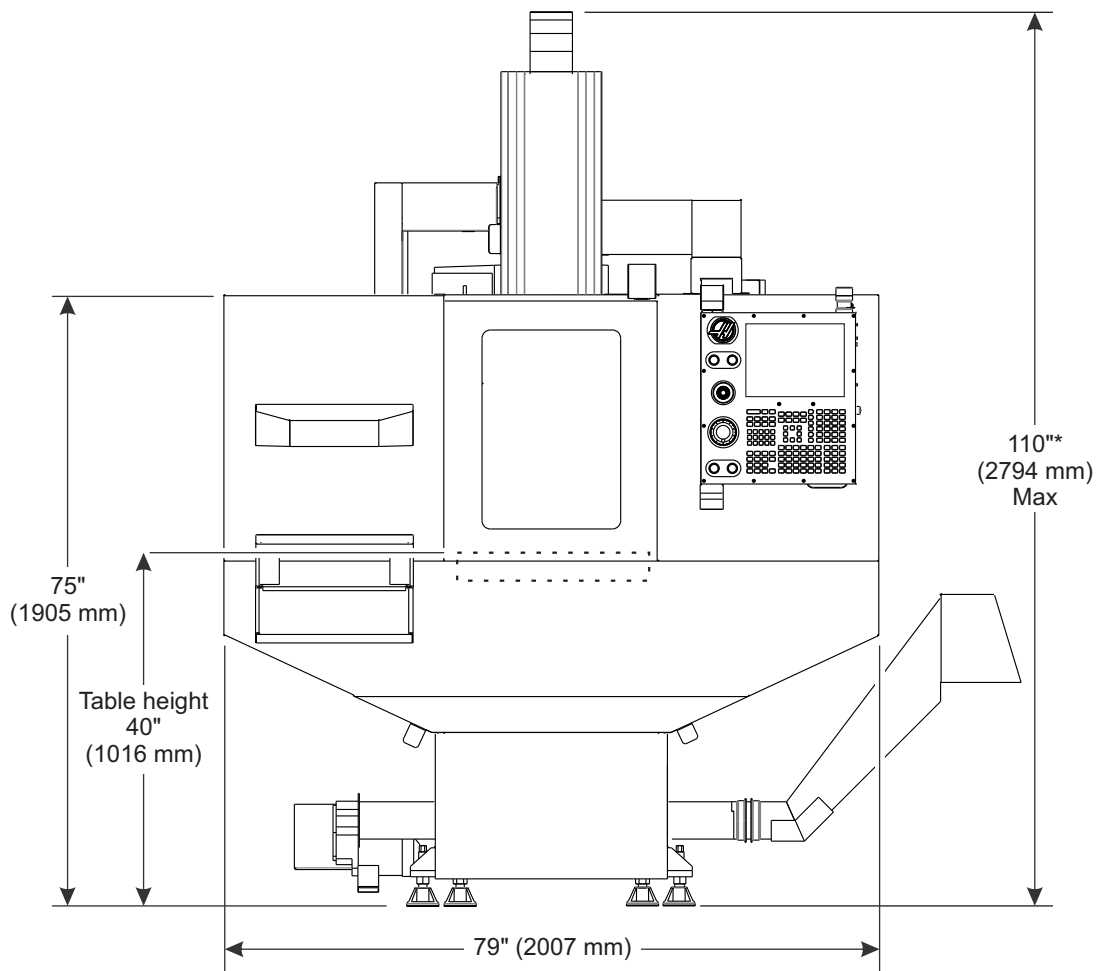
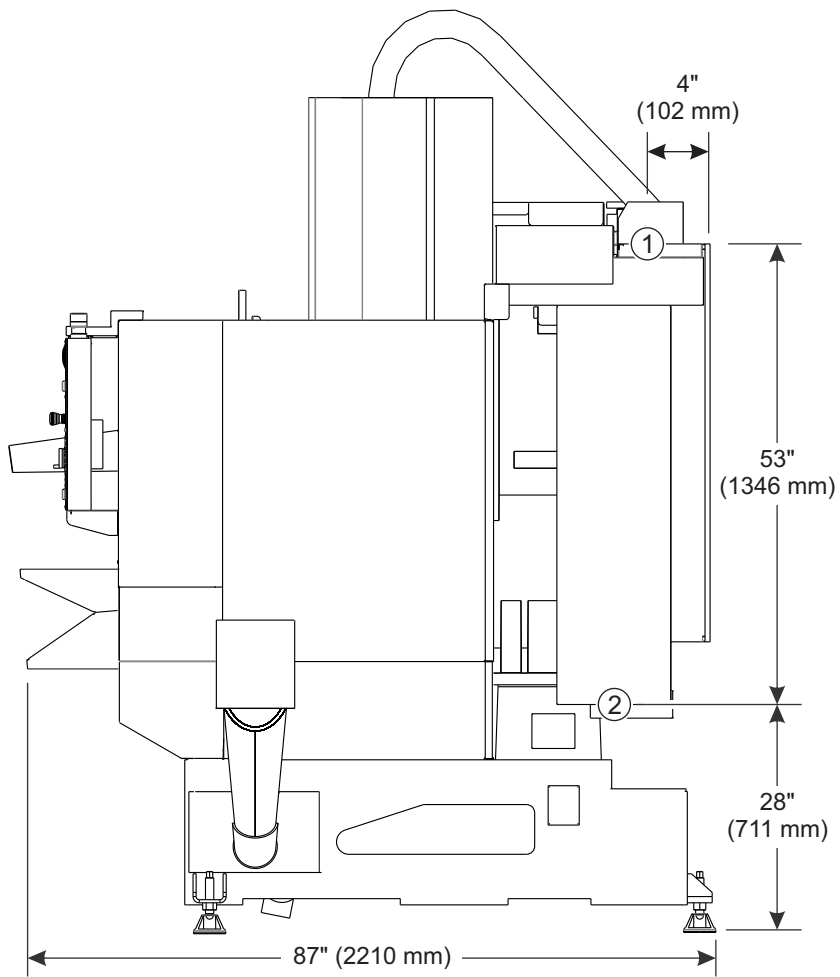
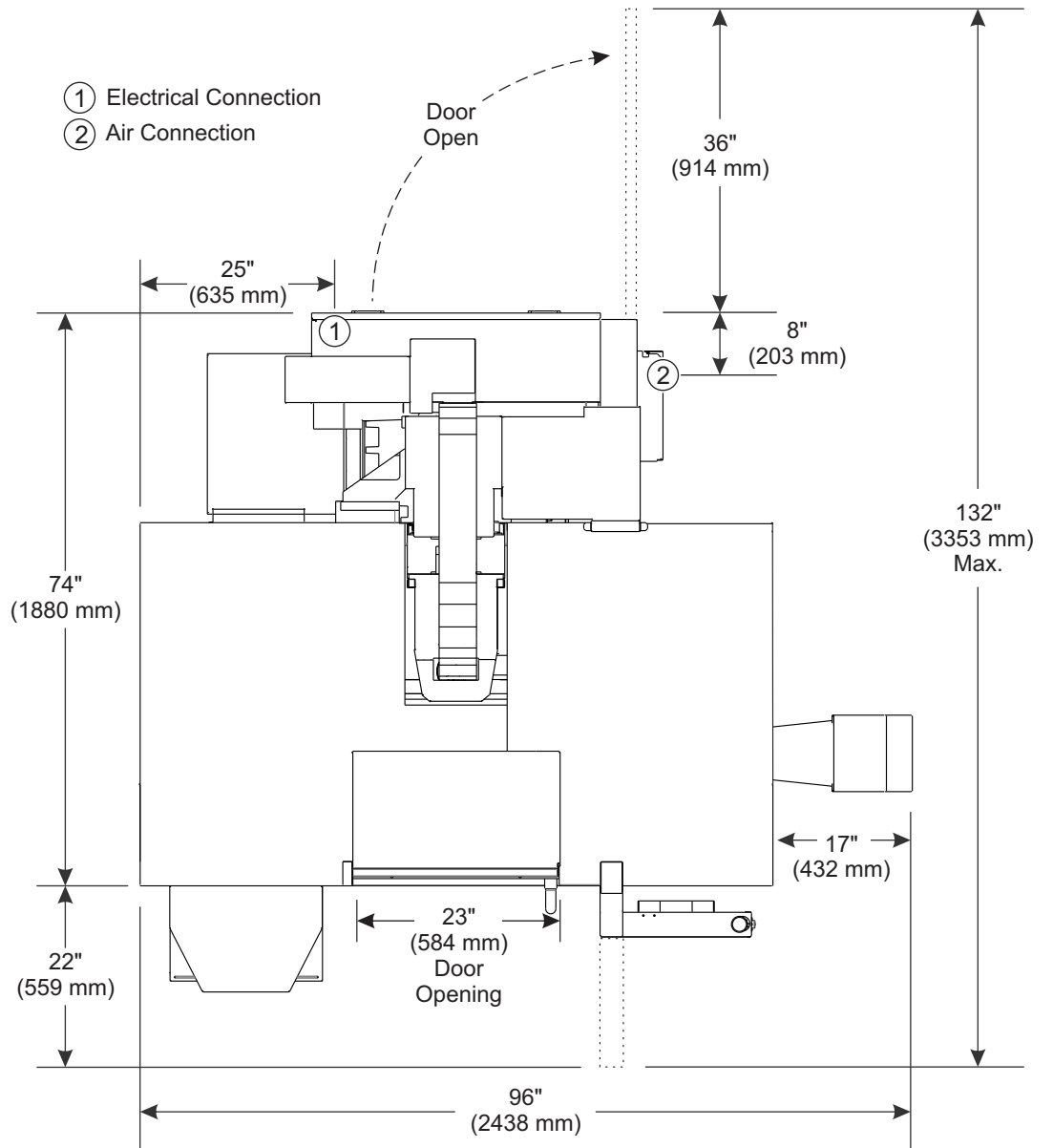


Mini Mill 2/Super Mini Mill 2 Machine Layout Drawing

For machines built after July 2015

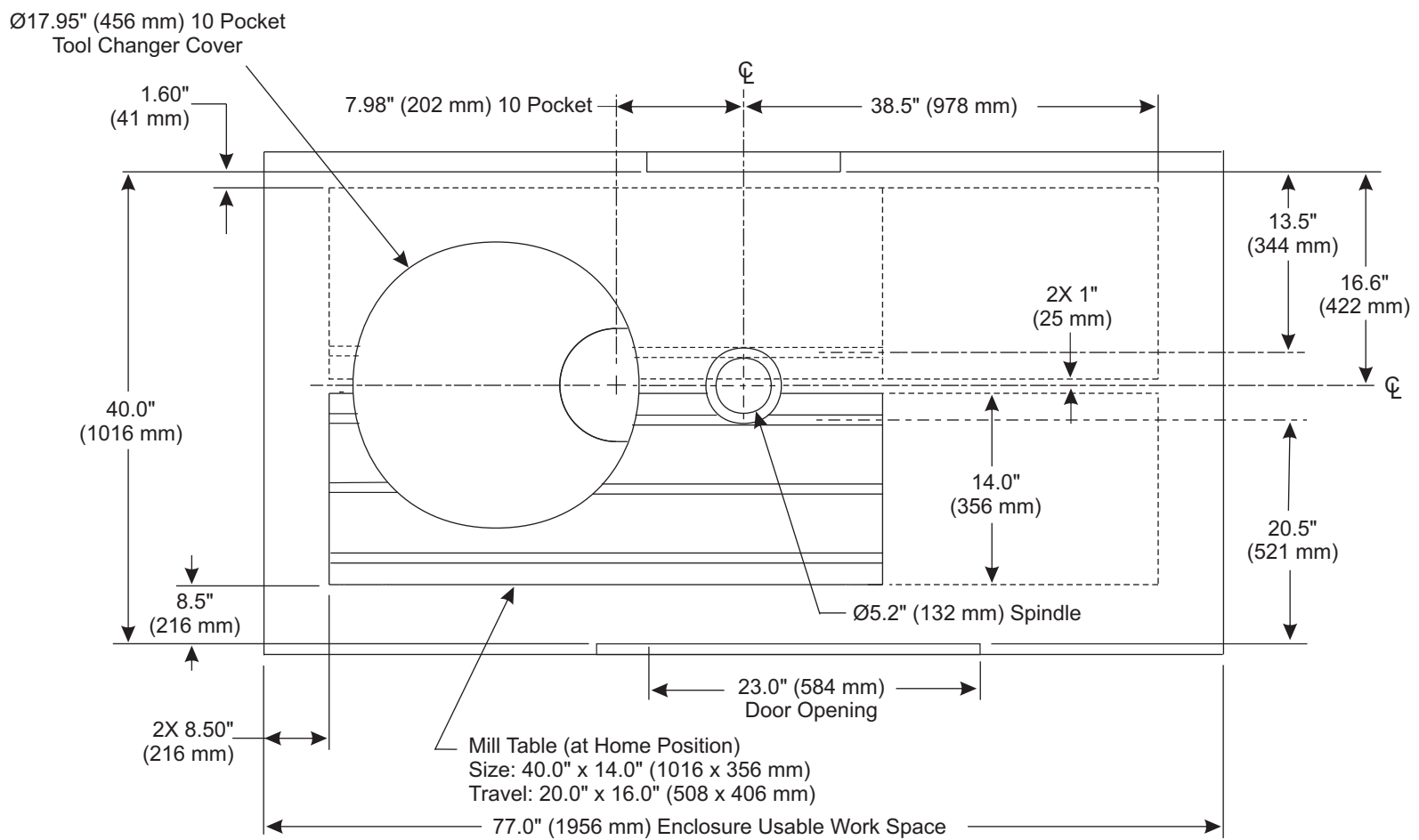
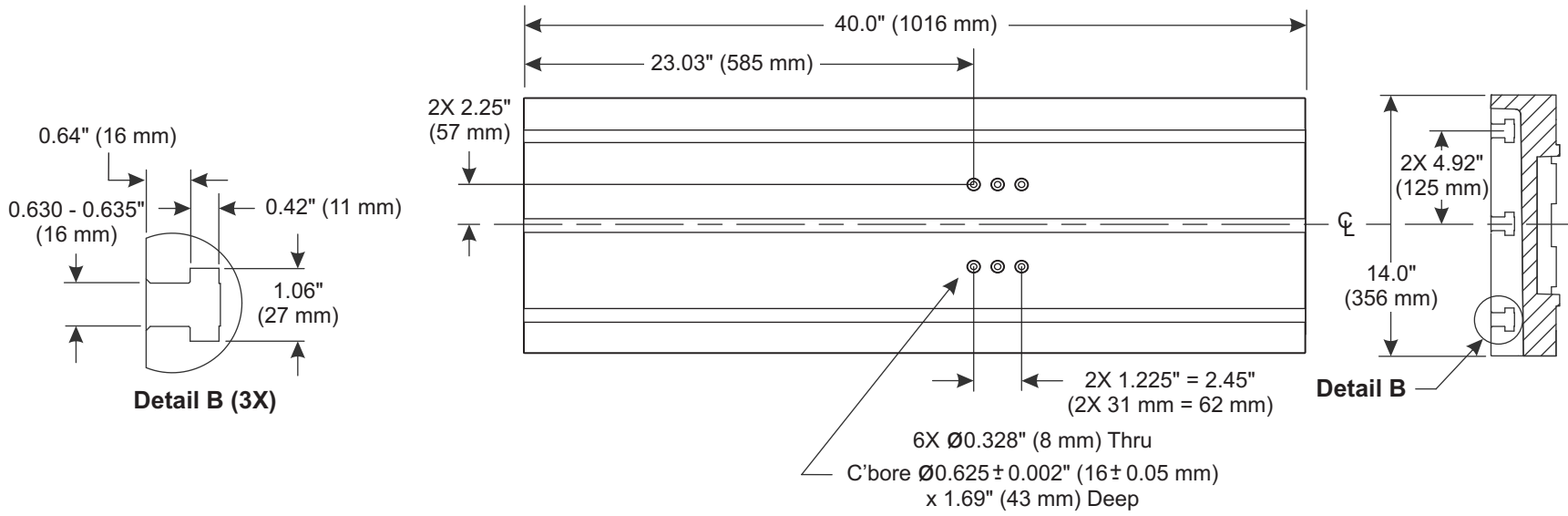
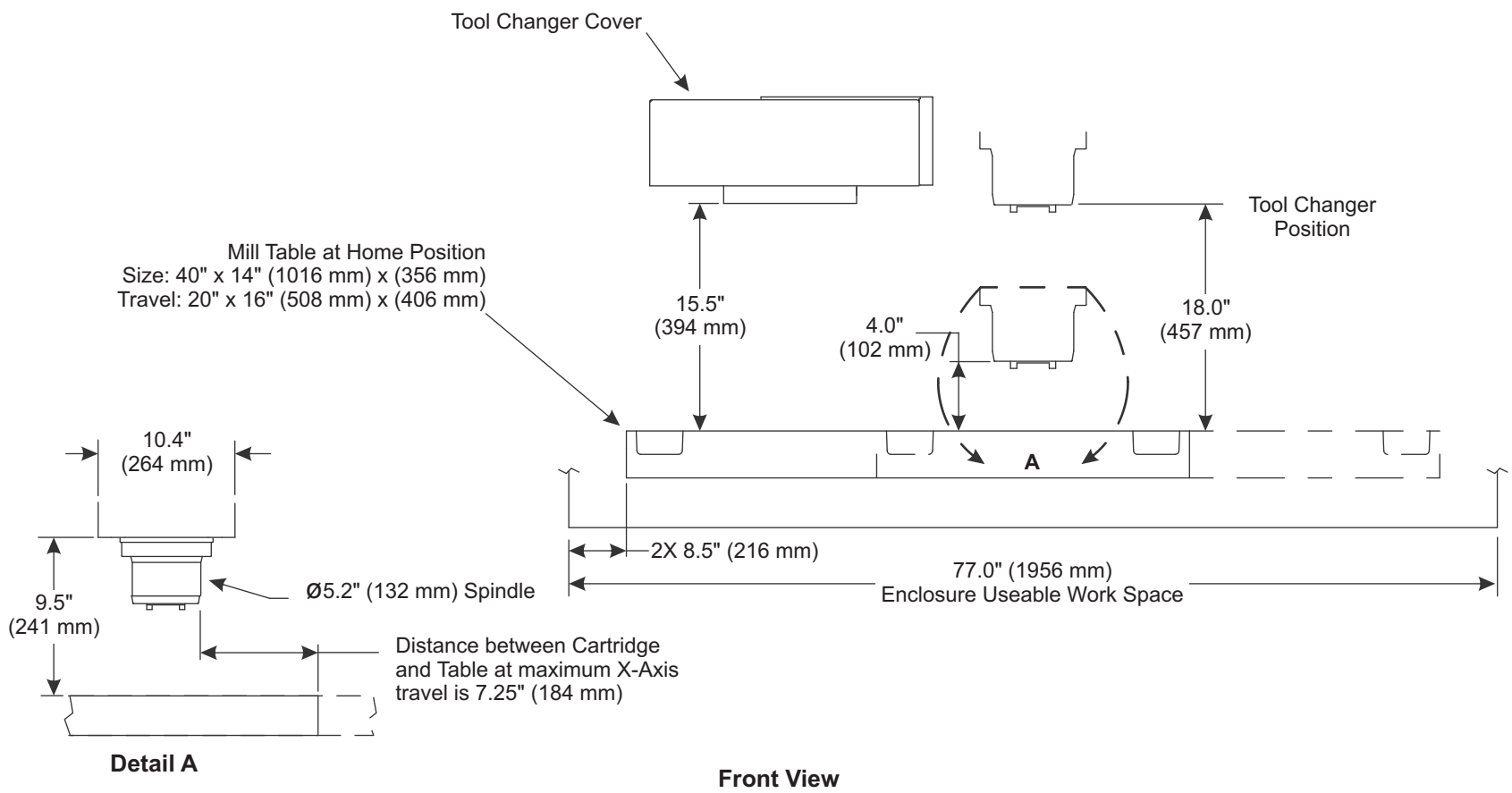


4X Leveling Pad Pin Dimension



*Shipping height: 94" (2388 mm) from base bottom
Remove cable carrier to get to 87" (2210 mm)
Remove regen housing to get to 85" (2159 mm)

Mini Mill 2/Super Mini Mill 2 Work Space Envelope



- NOTES:
1. Table positions at Max X & Y travels
 2. Measurements are from the edge of Mill Table to nearest obstruction (i.e. enclosure, way cover, door, etc.)