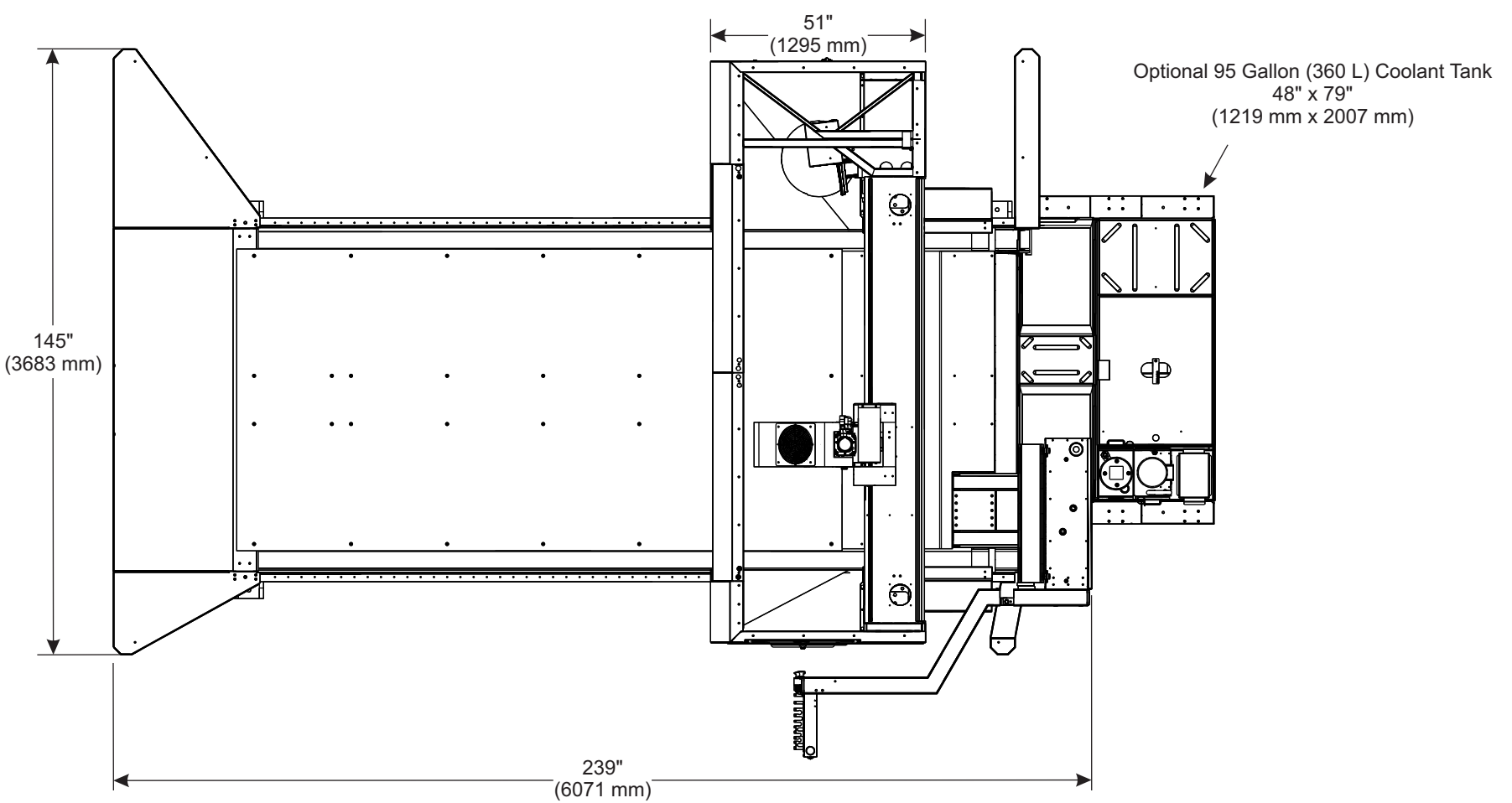
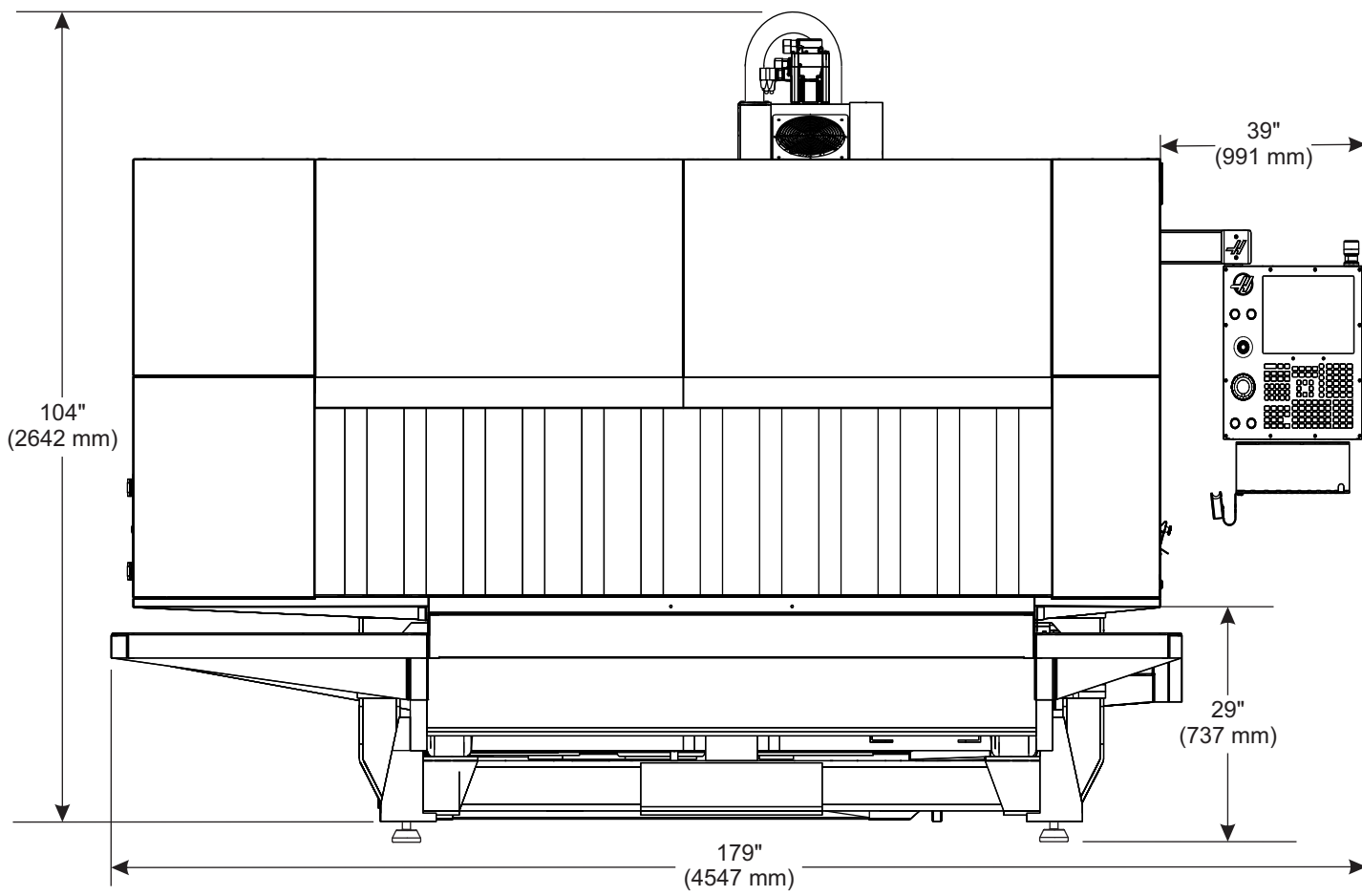
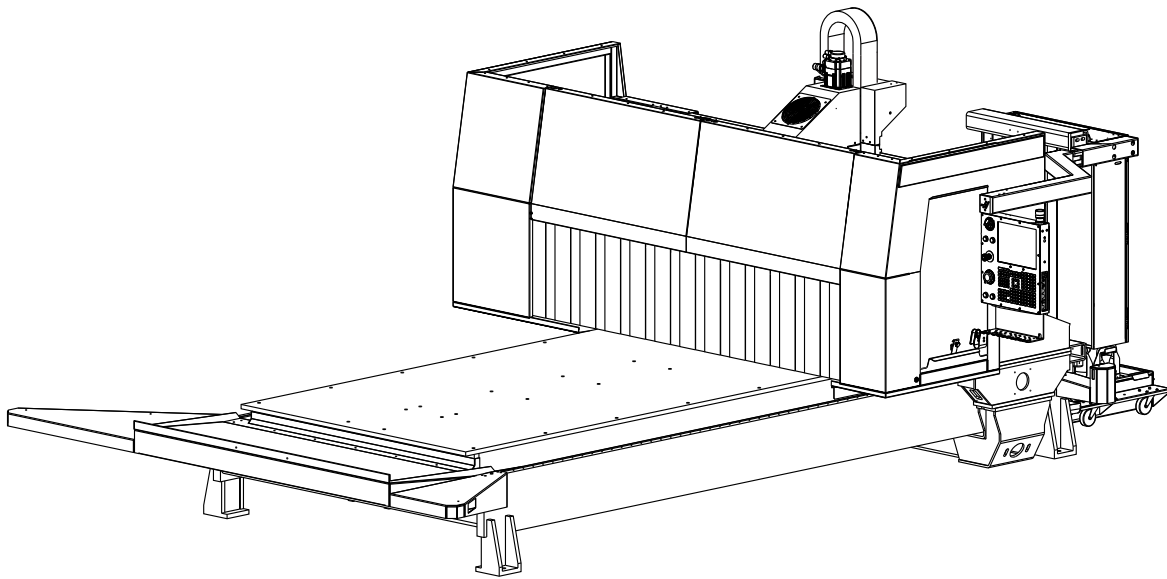
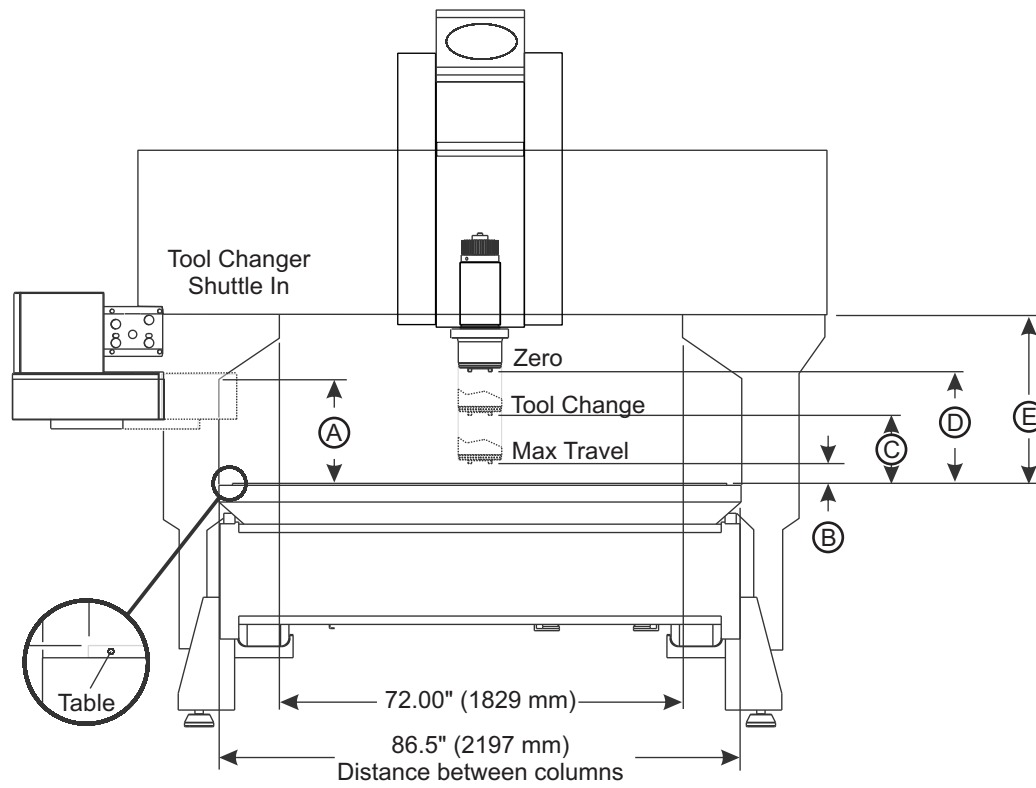
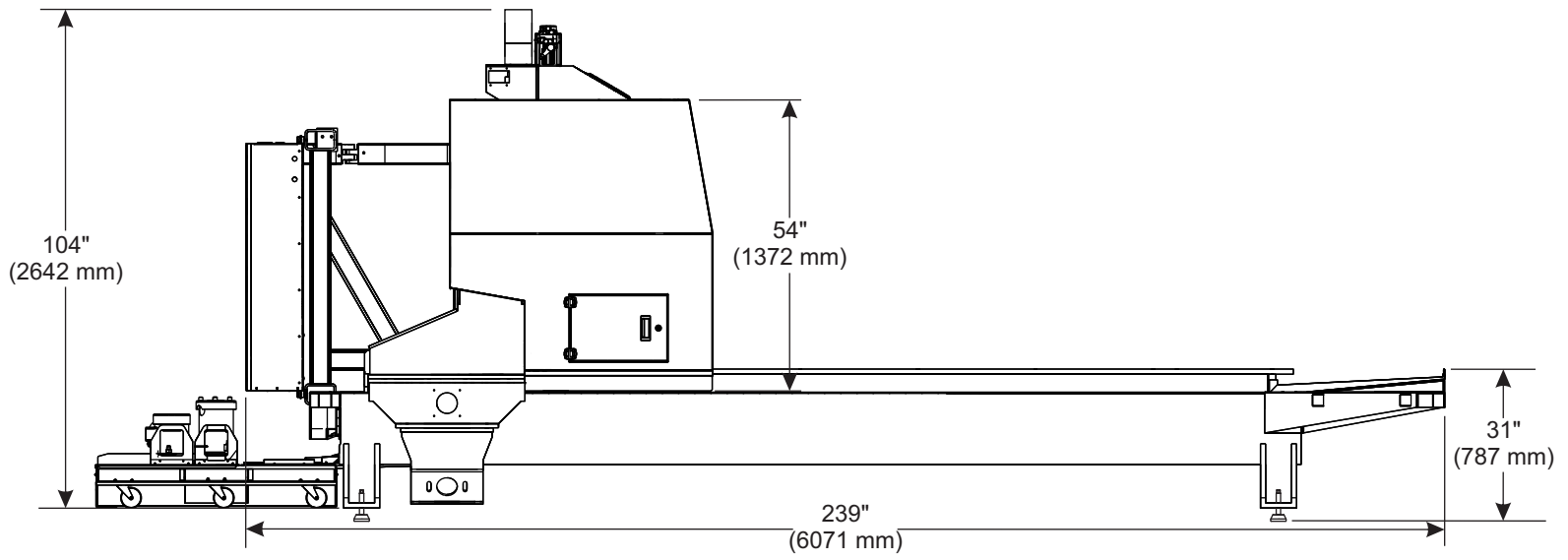
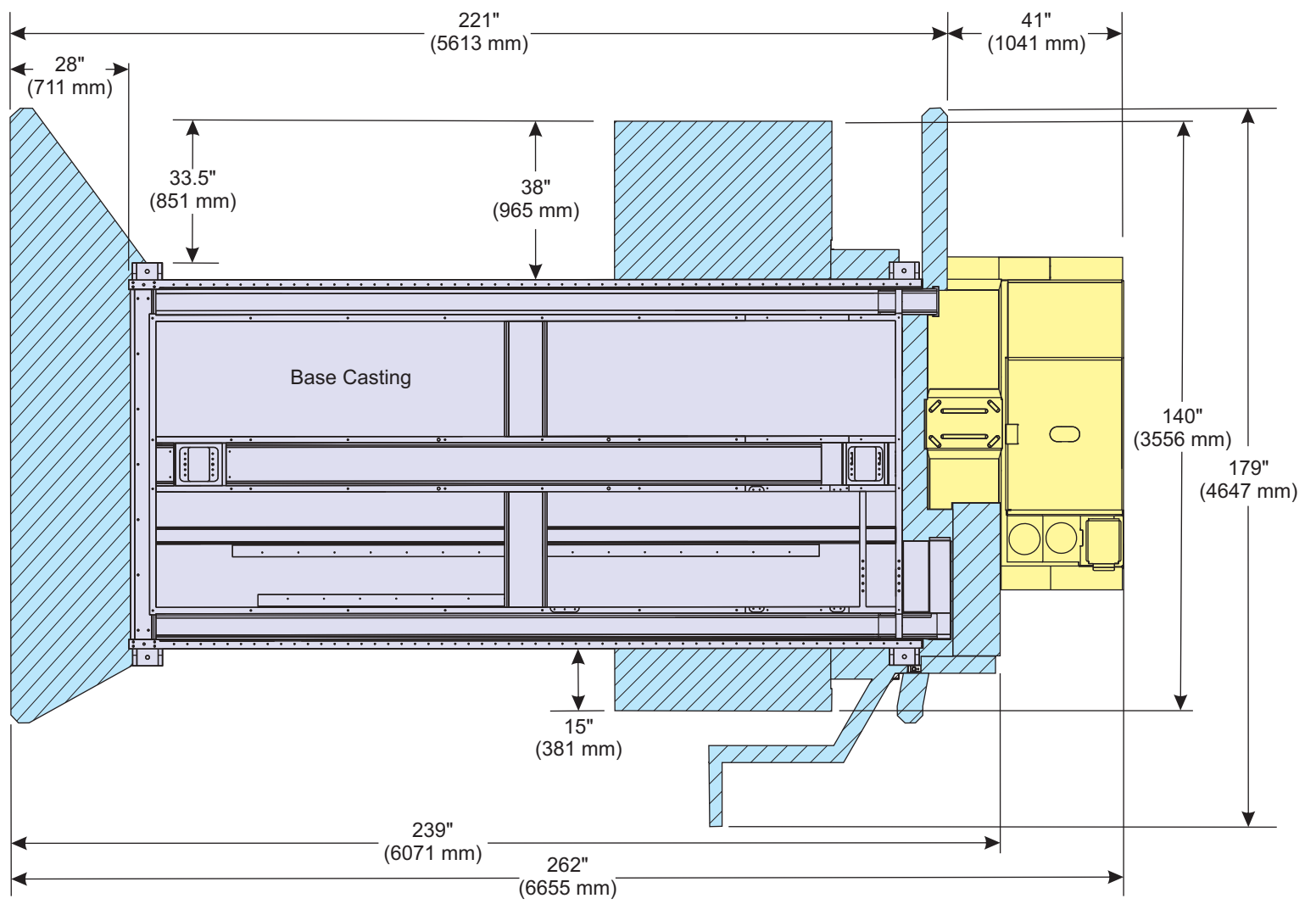


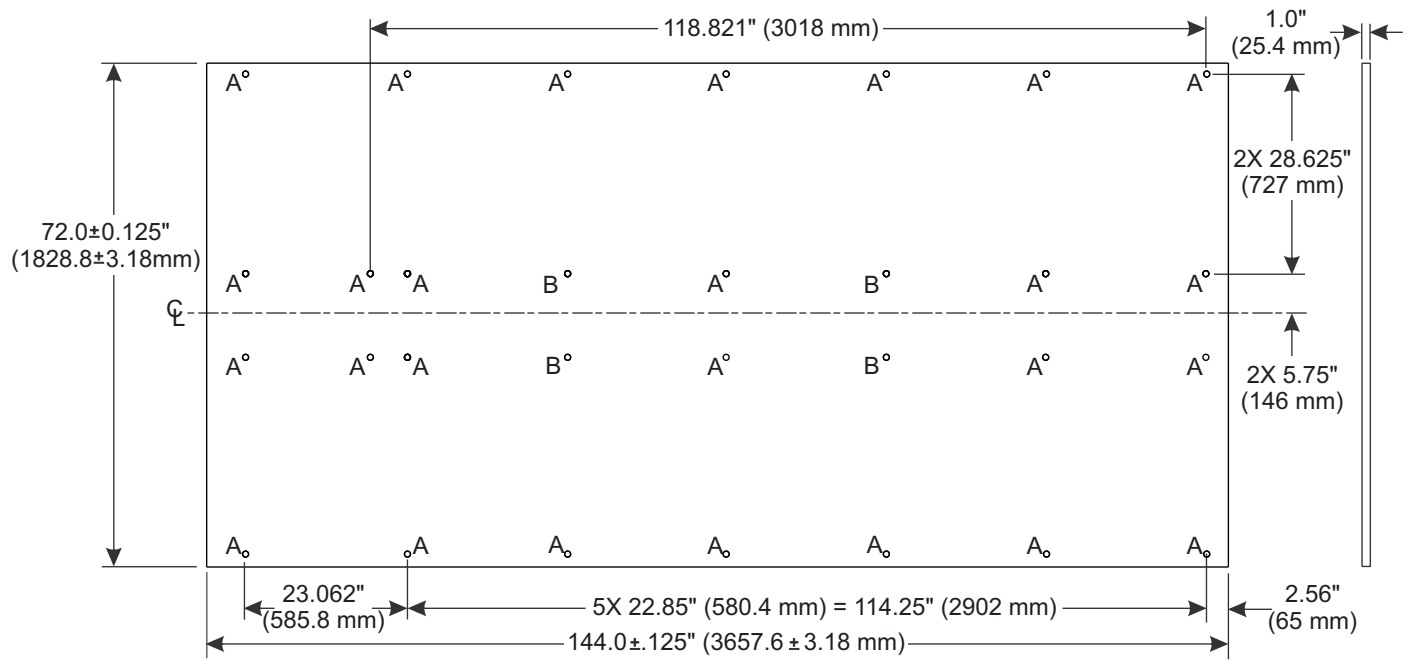
GR-712 Anchor Pattern





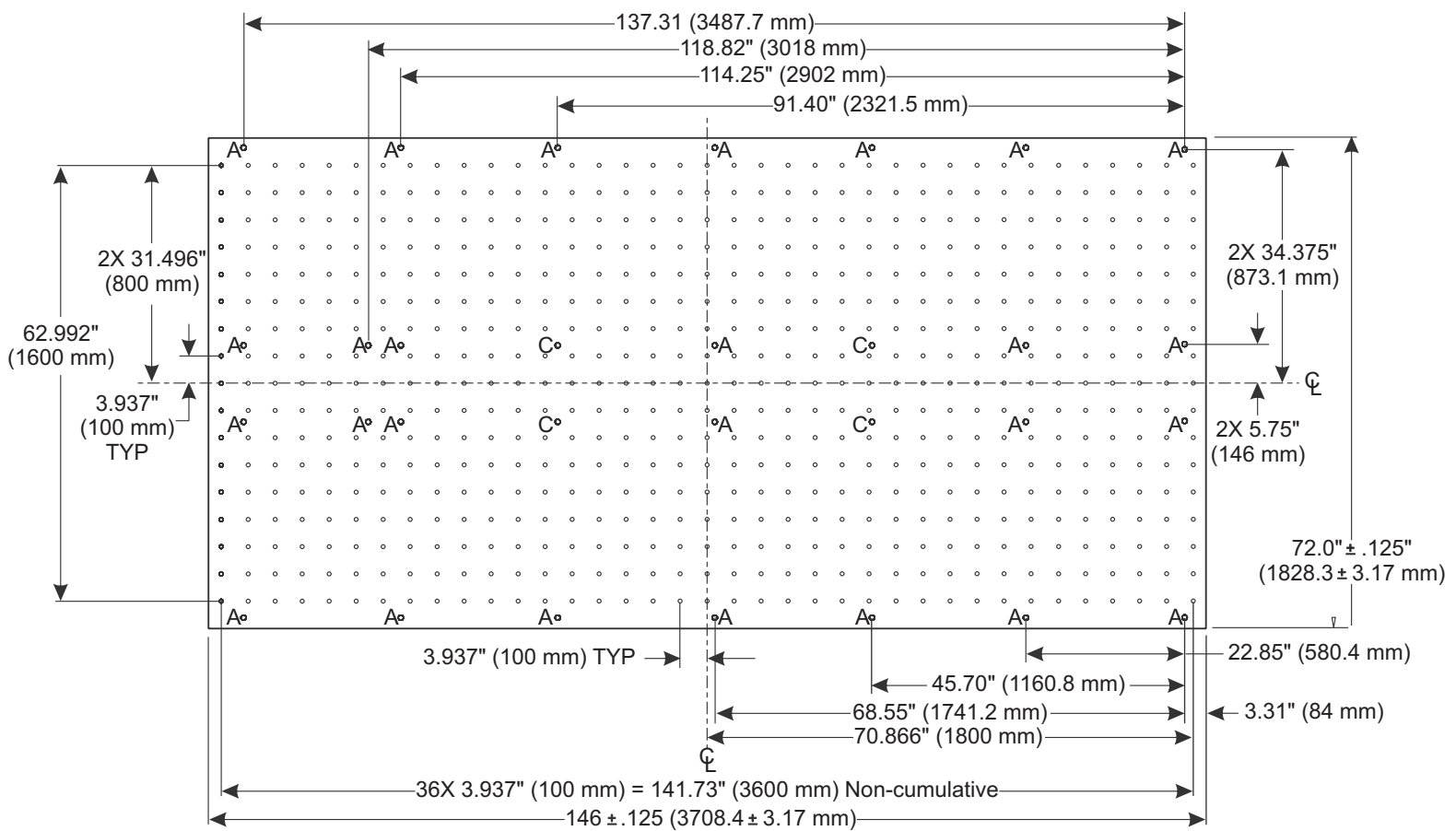
GR-712 Work Space

| | Standard | 6" Extended Z-Axis Clearance | 24" Extended Z-Axis Travel |
|-----|--------------------|------------------------------|----------------------------|
| (A) | 13.00" (330 mm) | 19.00" (483 mm) | 27.50" (699 mm) |
| (B) | 2.50" (64 mm) | 8.50" (216 mm) | 4.00" (102 mm) |
| (C) | 8.25" (210 mm) | 14.25" (362 mm) | 23.50" (597 mm) |
| (D) | 13.50" (343 mm) | 19.50" (495 mm) | 28.00" (711 mm) |
| (E) | 20.50" (521 mm) | 26.50" (673 mm) | 35.00" (889 mm) |



| Aluminum Table Hole Dimensions | | QTY. |
|--------------------------------|--|------|
| A | Ø.391" (9.93 mm) Thru x C'Sink Ø.709" (18 mm) x 0.59" (15 mm) Deep | 26 |
| B | 1/2-13 UNC-2B Thru x C'Sink Ø.709" (18 mm) x 0.59" (15 mm) Deep | 4 |

GR-712 Aluminum Table



| Steel Table Hole Dimensions | | QTY. |
|-----------------------------|--|------|
| A | Ø.391" (9.93 mm) Thru x C'Bore Ø.709" (18 mm) x 0.59" (15 mm) Deep | 26 |
| B | 1/2-13 UNC-2B Thru x C'Bore Ø.709" (18 mm) x 0.59" (15 mm) Deep | 4 |
| | * All unmarked holes - M12 x 1.75" (44.45 mm) x 0.75" (19 mm) Deep | 629 |

* Do Not Drill Thru

GR-712 Steel Table